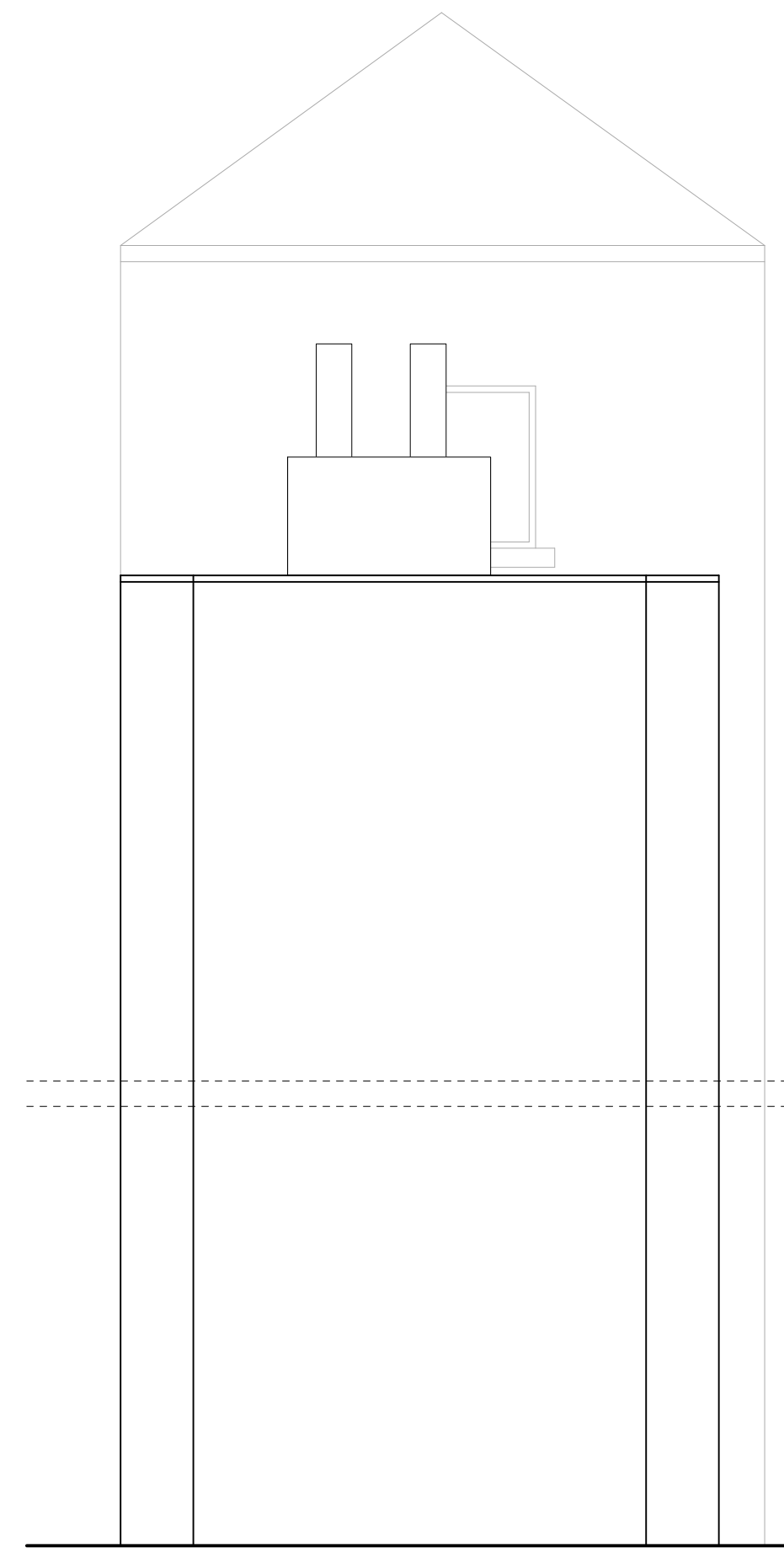


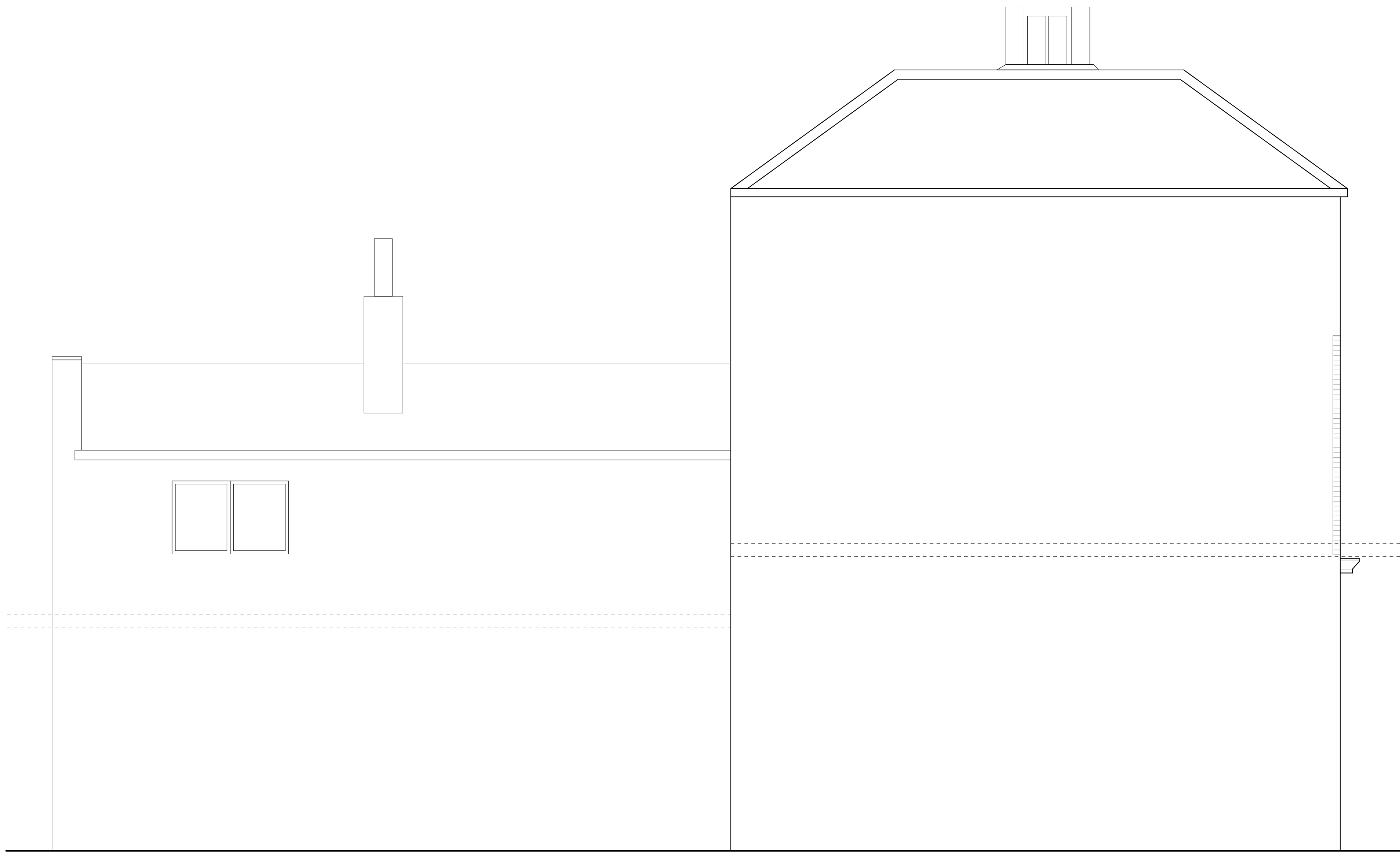
1 South Elevation
1:50 @ A1



1 East Elevation
1:50 @ A1



1 North Elevation
1:50 @ A1



1 West Elevation
1:50 @ A1



NOTES

- The drawing is copyright of Condy and Lofthouse Ltd. and may not be reproduced in any way without the explicit permission.
- All dimensions are to be checked on site. Do not scale from this drawing, work to agreed dimensions only. Any queries please contact this architect.

MATERIALS PROHIBITED

- Materials prohibited from use, except where shown, in accordance with Visual Protection in the Direction of Control of Materials (2017) or where required by the Council.
- High alumina content in the structural elements.
- wood used shall be permanent treatment to insects.
- concrete shall be reinforced to suit structural concrete.
- adhesives or adhesives containing products, as defined in the Control of Adhesives of Work Regulations, as amended 2004 or any other substance modification or re-modification thereof.
- any material containing or made from mineral fibres (for example, rock wool or slag wool) with a thickness of 1 inches or less and a length of 200 inches or less, unless they are specifically noted to prevent ignition of fibres.
- aggregates for use in reinforced concrete which do not comply with:
 - BS EN 12620 (Part 1 & 2) properties of aggregates used in concrete
 - BS EN 12620 (Part 1 & 2) properties of aggregates used in concrete
 - BS EN 12620 (Part 1 & 2) properties of aggregates used in concrete
- concrete or mortar shall not be used on walls or ceilings on which there is a risk of fire or explosion or a risk of fire or explosion.
- lead, lead paint or any other material containing lead which may be required, stored or disposed, and/or other relevant alloy, shall also comply with and be specifically required in building work pursuant to any relevant building regulation or where lead, lead paint or other lead-based products are specifically provided for in the Council.
- used flame-retardant foam or materials which may release toxic fumes in quantities which may be hazardous with reference to the tests set by the Health and Safety Executive.
- concrete shall not be used.
- ventilation shall be established as being from clean air source and from any product containing carbon monoxide or in breach of relevant to 2004/18/EC.
- Control of dangerous substances and preparation Regulations 2002. Reference should also be made to the COSHH (Control of Substances Hazardous to Health) Regulations 2002.
- any new water tank and gas installation.
- any gas-fired hot water storage tank for building elements particularly susceptible to corrosion.
- concrete used in circumstances where it is susceptible to sulphate reaction.
- materials containing chlorofluorocarbons (CFCs).
- where a building is not a listed building, any building work shall be carried out in accordance with the relevant building regulations, 2004/18/EC.
- Code of Practice and good building practice current at the date of completion of the relevant materials into the Works or the specifications thereof.

- Issued for Planning 2016-06-27
- Revised/Amended/Cancelled/Revoked
- Preliminary
- For Approval
- Tender
- Construction
- CLT Ltd
- Iona Group
- Shenanigans Pub rooftop extension
- Existing Elevations
- Scale 1:50 @ A1
- Drawn by: gale
- AS Jun 2016
- Revision 15-167-150



T: 0151 207 4371 • F: 0151 207 7087