

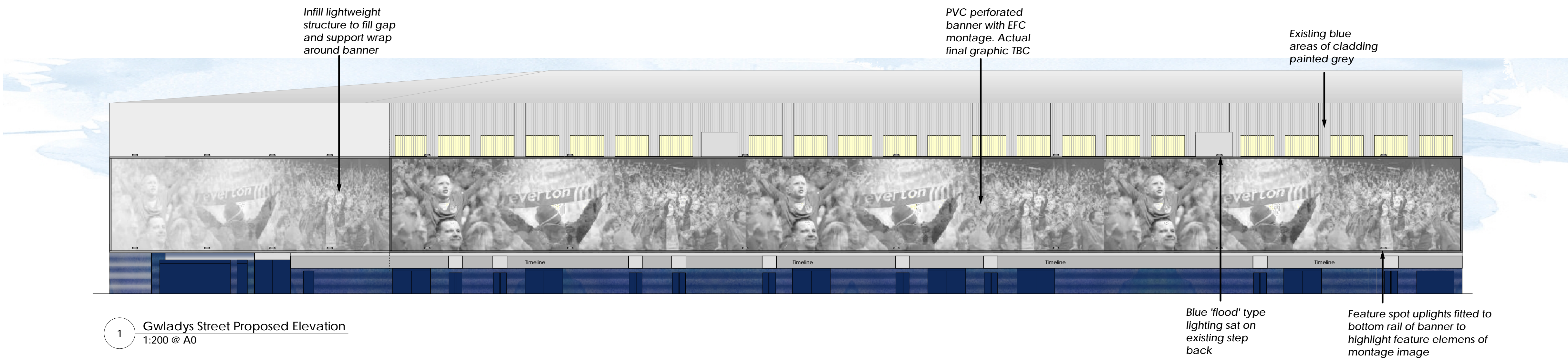
NOTES

The following is a list of notes and details for the proposed stadium improvements. It is intended to provide a clear and concise summary of the key elements of the scheme and to ensure that all relevant parties are aware of the proposed changes.

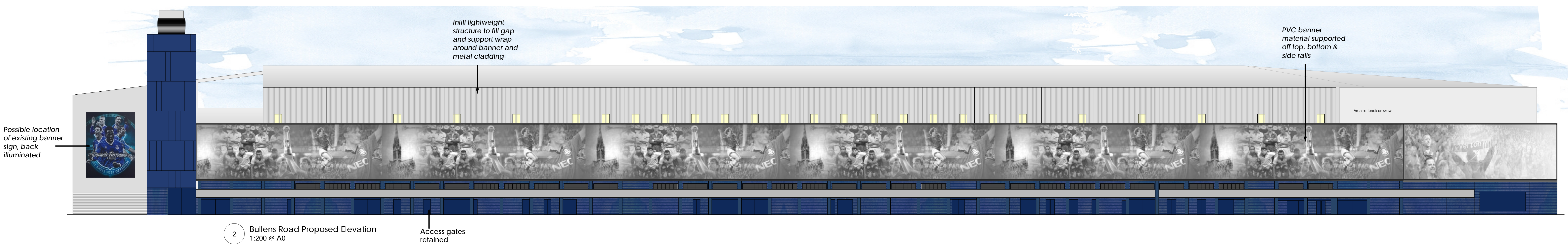
MATERIALS PROHIBITED

The following materials are prohibited for use in the proposed stadium improvements:

- Any material that is not approved by the relevant authorities.
- Any material that is not of a high quality and is likely to cause damage to the stadium or its surroundings.
- Any material that is not of a durable nature and is likely to require frequent replacement.
- Any material that is not of a fire-resistant nature and is likely to pose a fire risk.
- Any material that is not of a sustainable nature and is likely to have a negative impact on the environment.



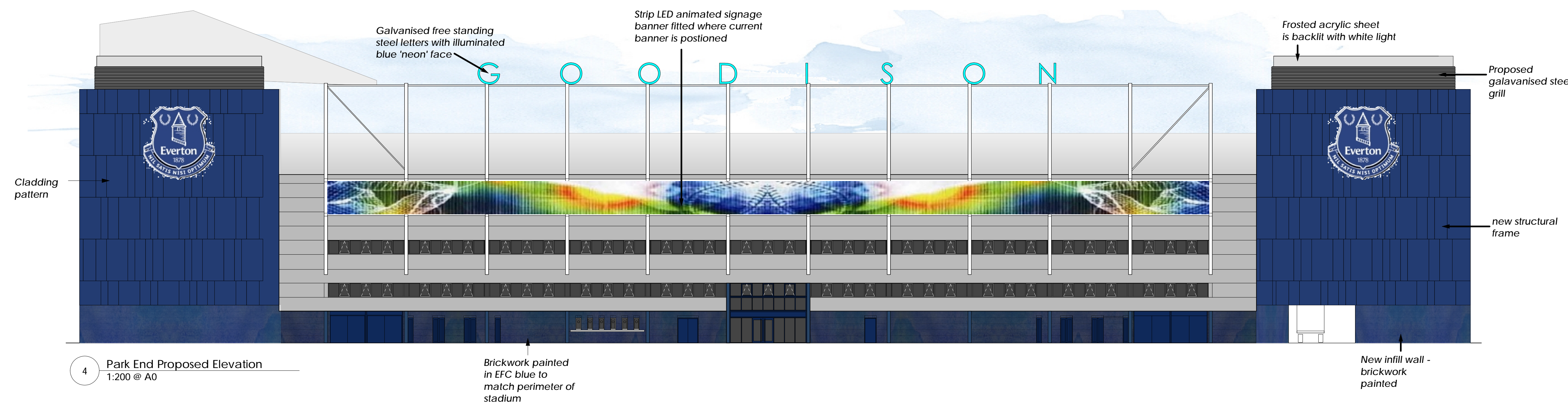
1 Gwladys Street Proposed Elevation
1:200 @ A0



2 Bulls Road Proposed Elevation
1:200 @ A0



3 Goodison Road Proposed Elevation
1:200 @ A0



4 Park End Proposed Elevation
1:200 @ A0