



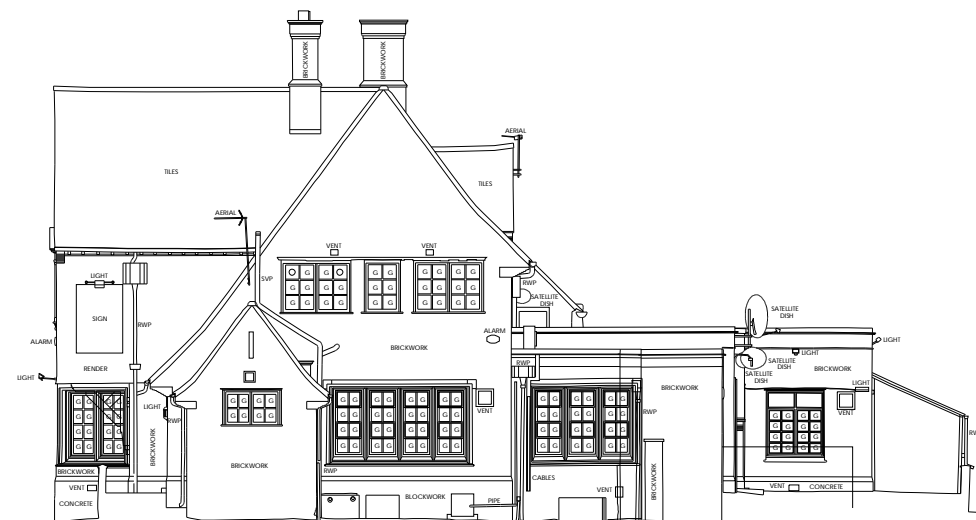
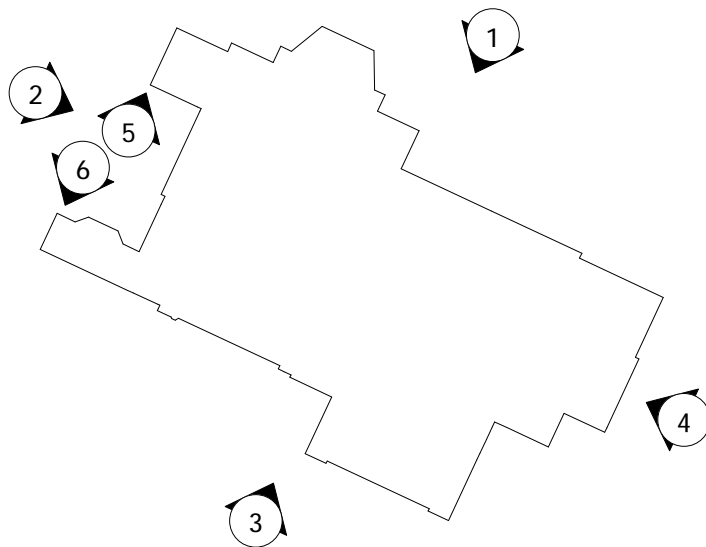
Datum 13.00m

Elevation 01



Datum 13.00m

Elevation 03



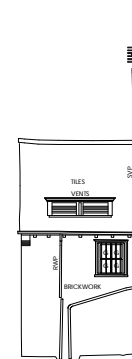
Datum 13.00m

Elevation 02



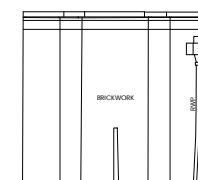
Datum 13.00m

Elevation 04



Datum 13.00m

Elevation 05



Datum 13.00m

Elevation 06

○ NOTES

- This drawing is Copyright of Condit and Lathouse Ltd. and may not be reproduced in any way without their specific permission.
- All dimensions are to be checked on site. Do not scale from this drawing. Work to figured dimensions only. Any queries please contact the architects.
- ## MATERIALS PROHIBITED
- Materials prohibited for use, except where used in accordance with 'Good Practice the Selection of Construction Materials (March 2017)' or unless required by the Contract.
- a) high alumina cement in the structural elements;
 - b) wood waste slates in permanent formwork to concrete;
 - c) calcium chloride admixtures for use in reinforced concrete;
 - d) alkalies or alkalis-for-containing products, as defined in the 'Code of Alkalies at Work Regulations, as amended 2006 or any other statutory modification or re-enactment thereof;
 - e) any naturally occurring or man made mineral fibres (for example, rock-wool or slag wool) with a thickness of 3 microns or less and a length of 200 microns or less, unless they are appropriately sealed to prevent migration of fibres;
 - f) aggregates for use in reinforced concrete which do not comply with:
 - BS EN 12620:2002. Properties of aggregates used in concrete.
 - BS EN 12189:2002. Properties of aggregates used in mortar.
 - BS EN 12655 (Parts 1 & 2): properties of lightweight aggregates.

"Guidance on avoiding alkali-silica reaction and limitations on alkali content"
Ref Digest 330 (2004) & "Concrete Society Technical Report 302 (1999):
 - g) lead, lead paint or any other materials containing lead which may be ingested, inhaled or absorbed, except where copper alloy fittings which also containing lead are specifically required in drinking water pipework by any relevant statutory regulation or where lead flashings or other lead roof coverings are specifically provided for in the Contract;
 - h) any formaldehyde based or materials which may release formaldehyde in quantities which may be hazardous with reference to the limits set by the Health and Safety Executive.
 - i) calcium alkalis bricks or tiles;
 - j) vermiculite unless it is labelled as being fibre-free; calcium alkalis bricks or tiles;
 - k) any products containing cadmium referred to in Statutory Instrument SI 2006/3311 Controls on dangerous substances and preparations Regulations 2006. Reference should also be made to 'HSE GS3711 Cadmium and lead'.
 - l) any new timber treated with pentachlorophenol
 - m) non galvanneal mild steel structural flanges for building elements particularly susceptible to erosion
 - n) concrete used in circumstances where it is susceptible to alkali/silica reaction;
 - o) materials containing chlorofluorocarbons (CFCs)
 - p) solvent based paints except where water based paints are unavailable for unavoidable
 - q) any new materials not in accordance with statutory requirements, British Standards, Codes of Practice and good building practice (can refer to the date of incorporation of the relevant materials into the Works or the specifications thereof)

Ⓐ Planning Application 2015-05-28 CC

⊙ First Issue 2015-04-02 CC

REVISION DETAILS date / by

☐ Preliminary

 For Approval

☐ Tender

☐ Construction

CLIENT

Hitchcock Wright and Partners

Hitchcock Wright and Partners

PROJECT

Bridge Inn, Childwall Valley Road,
Balla Male

Belle Vale

DRAWING TITLE

Existing Elevations The Bridge Inn

SCALE drawn by date

1:200@A3 SurvOps Mar 201

DRAWING NO **revision**

14 123 150 (A)

14-123-130 (A)

www.uncc.edu

www.uncc.edu



Condé Lofthouse Architects

T: 0151 207 4371 • F: 0151 207 7087
