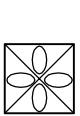







LEGEND

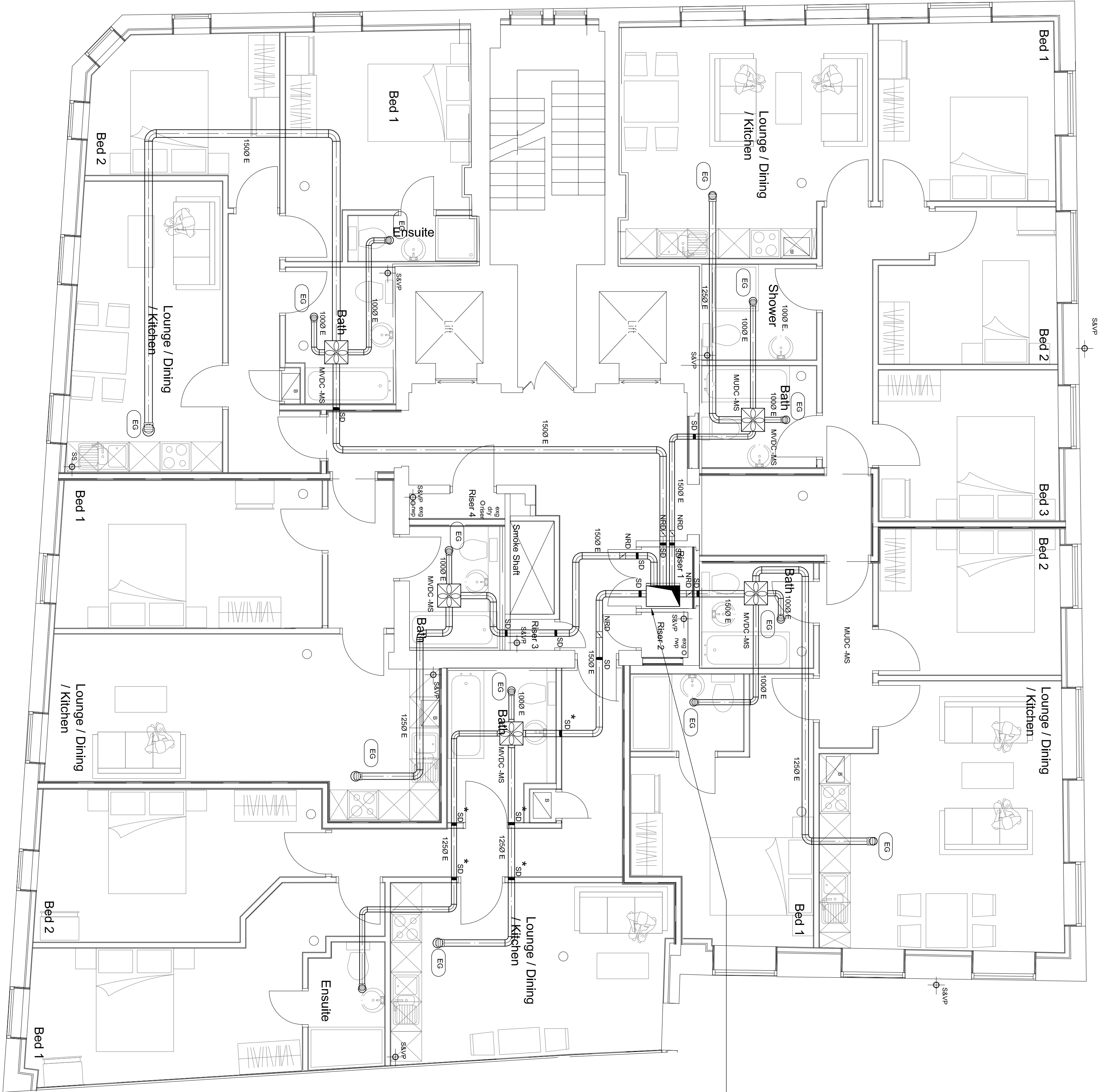
-  VENT AXIA MULTI-VENT MVDC-A
-  MVDC-MS 1500 EXTRACT VALVE, (FIRE RA WITH INTUMESCENT CORE)
-  EG EXTRACT DUCT.
-  E NON-RETURN DAMPER
-  NRD SMOKE DAMPER
-  SMOKE DAMPER

NOTE

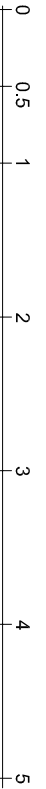
- SMOKE DAMPER CONTROL PANEL TO BE LOCATED IN RECEPTION AREA ON GROUND FLOOR.
- ALL SMOKE DAMPERS IN COMMUNAL AREAS TO BE LINKED TO MAIN PANEL

* SMOKE DAMPERS MARKED AS THIS ARE TO BE CONFIRMED BY BUILDING CONTROL WHETHER FIRE DAMPERS ALL ACCEPTABLE AT TENDER STAGE SMOKE DAMPERS TO BE ALLOWED AND LINKED ON TO APARTMENT FIRE ALARM PANEL.

600 x 400 EXHAUST DUCT TO ROOF RISING DUCT TO TERMINATE AT ROOF LEVEL, NON-RETURN DAMPER, RISING DUCT TO INCORPORATE SMOKE DAMPERS WITHIN THE FLOOR AT EVENT LEVEL



Proposed 1- 6 th floor plan @ 1:50



T2	TENDER ISSUE	18.09.15
T1	TENDER ISSUE	07.04.15
Rev.	Description	Date
PSD	PROGRESSIVE SERVICES DESIGN LTD	27 August 2015
BUILDING SERVICES CONSULTANCY	CHARTERED ENGINEERING DESIGN LTD	07.04.15

Client: DAMIAN SILVERBECK

Project:

CITRUS HOUSE
LIVERPOOL

Drawn: P.J.	Checked: C.F.
Scale: 1:50 (A1)	Date: April 2015
Title:	

Typical Ventilation
Layout

Drawing Number: 15-1301-M01	Rev: T2
-----------------------------	---------