

GENERAL NOTES

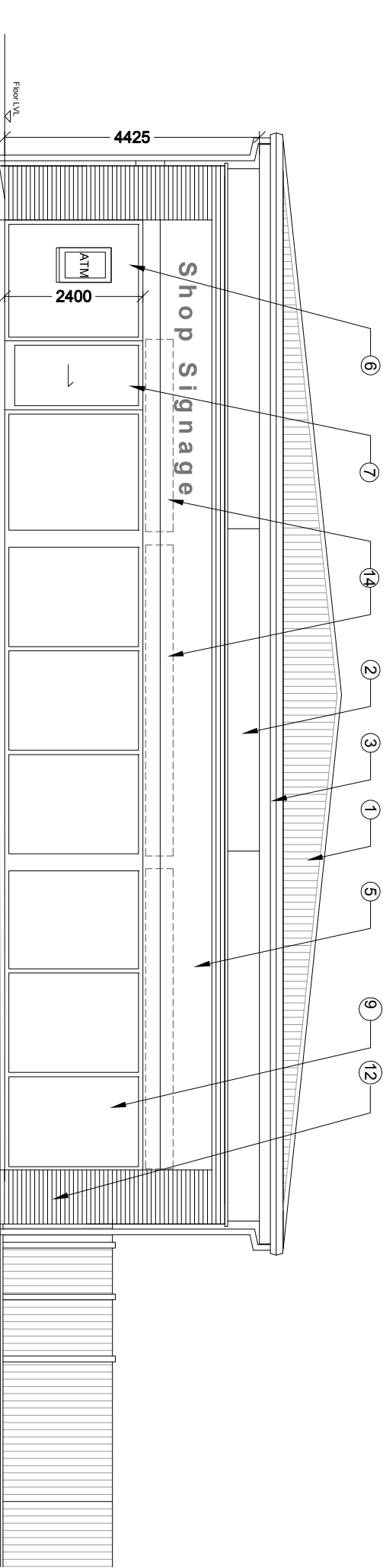
All dimensions must be checked on site  
All setting out to be checked on site  
All levels must be checked on site and their datum confirmed  
This drawing must be read in conjunction with the relevant specification clauses  
This drawing must not be used for land transfer purposes

©Denning Male Polisano

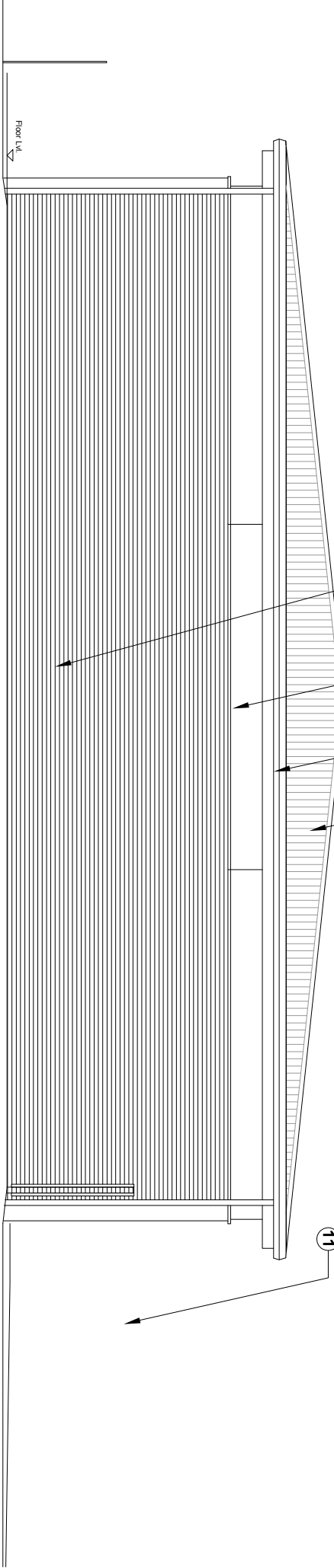
DRAWING NOTES

P- refers to Preliminary Drawing  
T- refers to Tender Drawing  
C- refers to Construction Drawing

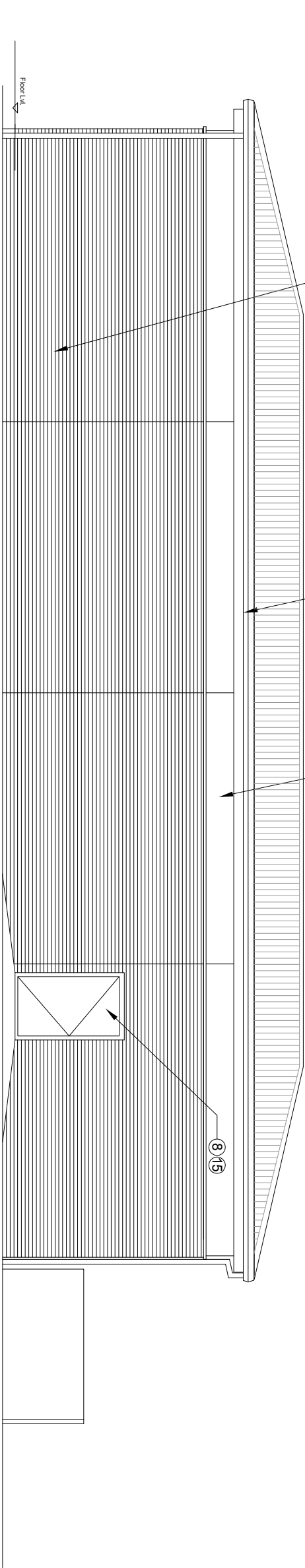
REVISION	DATE	BY
P1 PLANNING ISSUE	-	-
P2 Brick plinth added	17/03/14	AL
P3 General Update	07/04/14	BW
P4 Note added for ATM	11/04/14	BW
P5 Windows added to East elevation	12/09/14	BW
P6 External finishes amended to Planning Officers Comments	24/9/14	MP
P7 External finishes amended to Planning Officers Comments	24/9/14	MP
P8 Bin area revised	01/10/14	BW
P9 Additional window added to East Elev.	22/10/14	BW
P10 Modified to latest highways tracking info	08/12/14	BW



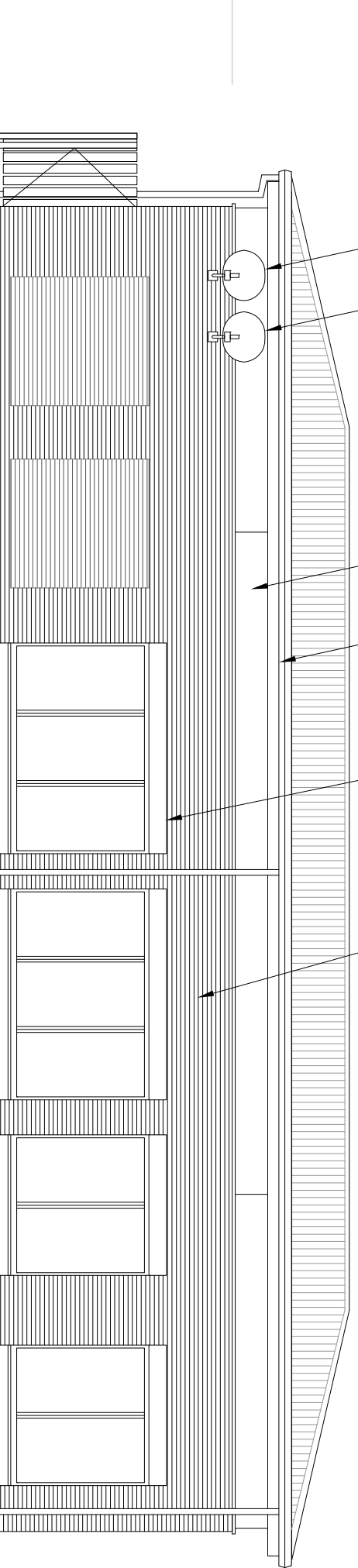
North Elevation



South Elevation



West Elevation



East Elevation

CLIENT  
TPS-DEZ Developments

PROJECT TITLE  
Booker Avenue  
Liverpool

DRAWING TITLE  
Elevations - Sheet #2  
The Retail Store

DATE  
Feb 14

SCALE  
1:100

DRAWING No.  
129-401.P10

Denning Male Polisano  
Chartered Architects

Ferneberga House  
Alexandra Road  
Farnborough  
Hampshire GU14 6DQ

T +44 (0) 1252 318448  
www.dmp-architects.co.uk