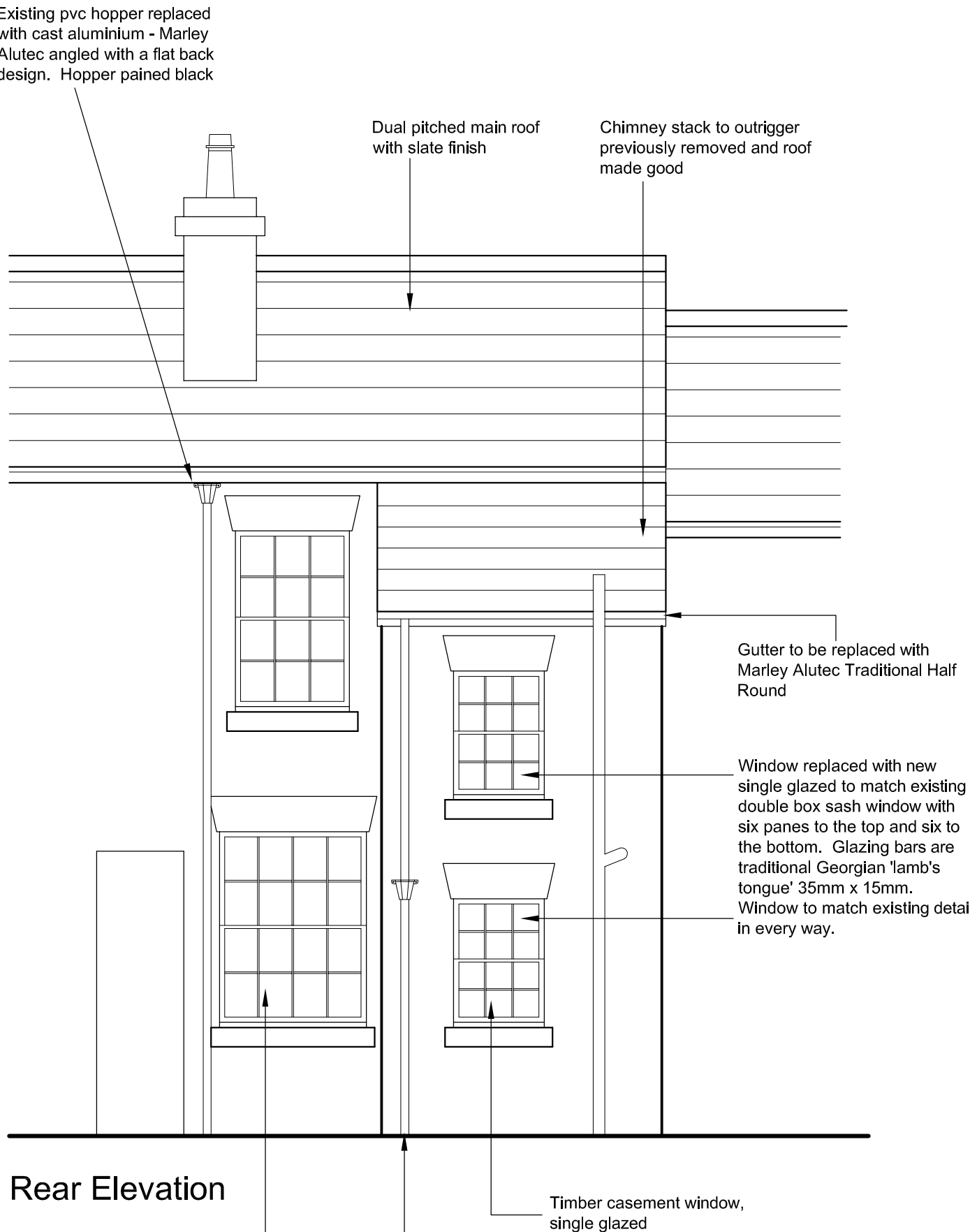


Front Elevation

BASEMENT

Existing basement to be taken back to structure to allow re-tanking. Tanking works to contracotrs specification, to include sump pump, replacement floor including 75mm insulation and tanking membrane. Membrane to continue up walls and secured with membrane plugs at 250mm c/c. Seal all joints with butyl rubber waterproof tape. Internal finish to be Sika Render and plaster.



Rear Elevation

Original timber double box sash window with eight panes to the top and eight to the bottom. Glazing bars are traditional georgian 'lamb's tongue' 35mm x 15mm

Existing pvc down pipe replaced with aluminium sections - Marley Alutec Tudor radiation range

Existing pvc hopper replaced with cast aluminium - Marley Alutec angled with a flat back design. Hopper painted black

Existing pvc hopper replaced with cast aluminium - Marley Alutec angled with a flat back design. Hopper painted black

Dual pitched main roof with slate finish

Chimney stack to outrigger previously removed and roof made good

Gutter to be replaced with Marley Alutec Traditional Half Round

Window replaced with new single glazed to match existing double box sash window with six panes to the top and six to the bottom. Glazing bars are traditional Georgian 'lamb's tongue' 35mm x 15mm. Window to match existing detail in every way.

Timber casement window, single glazed