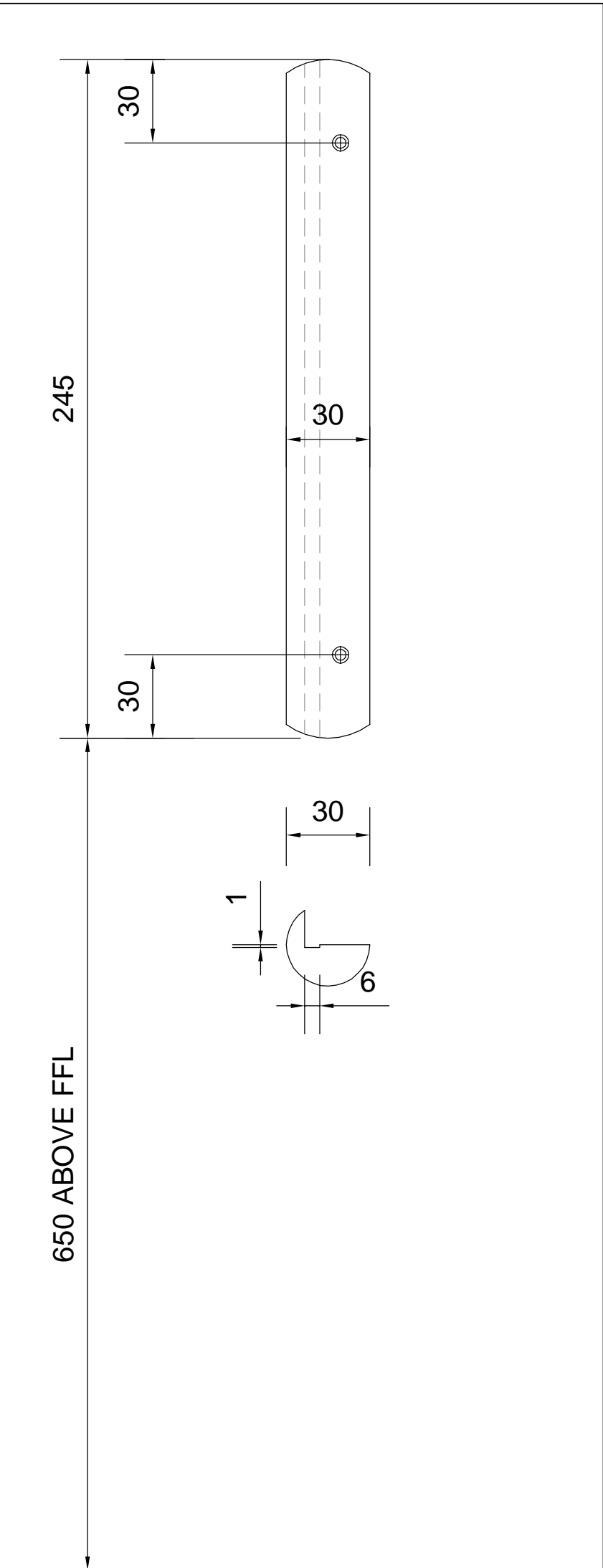


GENERAL NOTES:

1. ALL DIMENSIONS TO BE CHECKED ON SITE PRIOR TO FABRICATION OF THE WORKS.
2. ALL SHOPFRONTS & WINDOWS TO BE MANUFACTURED FROM SENIOR SYSTEM SECTIONS OR EQUAL APPROVED AND INSTALLED BY APPROVED SENIOR SYSTEMS INSTALLER OR EQUAL APPROVED
3. DRAWING TO BE READ IN CONJUNCTION WITH 12402-323 AND 330

DETAIL 331-05

B1

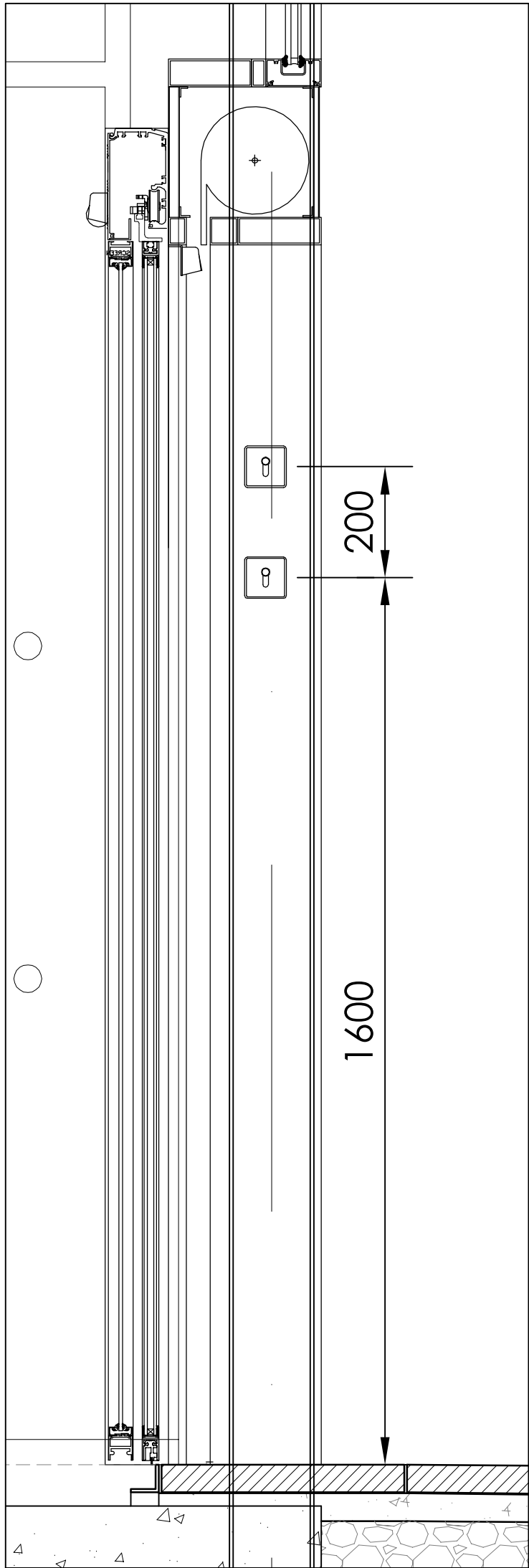


**STAINLESS STEEL BUFFER
DETAIL - SCALE 1:2**

245 x 30mm Ø STAINLESS STEEL BUFFER
2 No FIXED TO SALES SIDE OF EXIT SCREEN
2No FIXED TO LOBBY SIDE OF ENTRANCE SCREEN

ALSO ALLOW FOR 2 NO ADDITIONAL BUFFERS FOR FIXING EXTERNALLY TO SIDES OF ENTRANCE AUTO DOORS AND FOR 2 NO ADDITIONAL BUFFERS FOR FIXING INTERNALLY TO SIDES OF EXIT AUTO DOORS

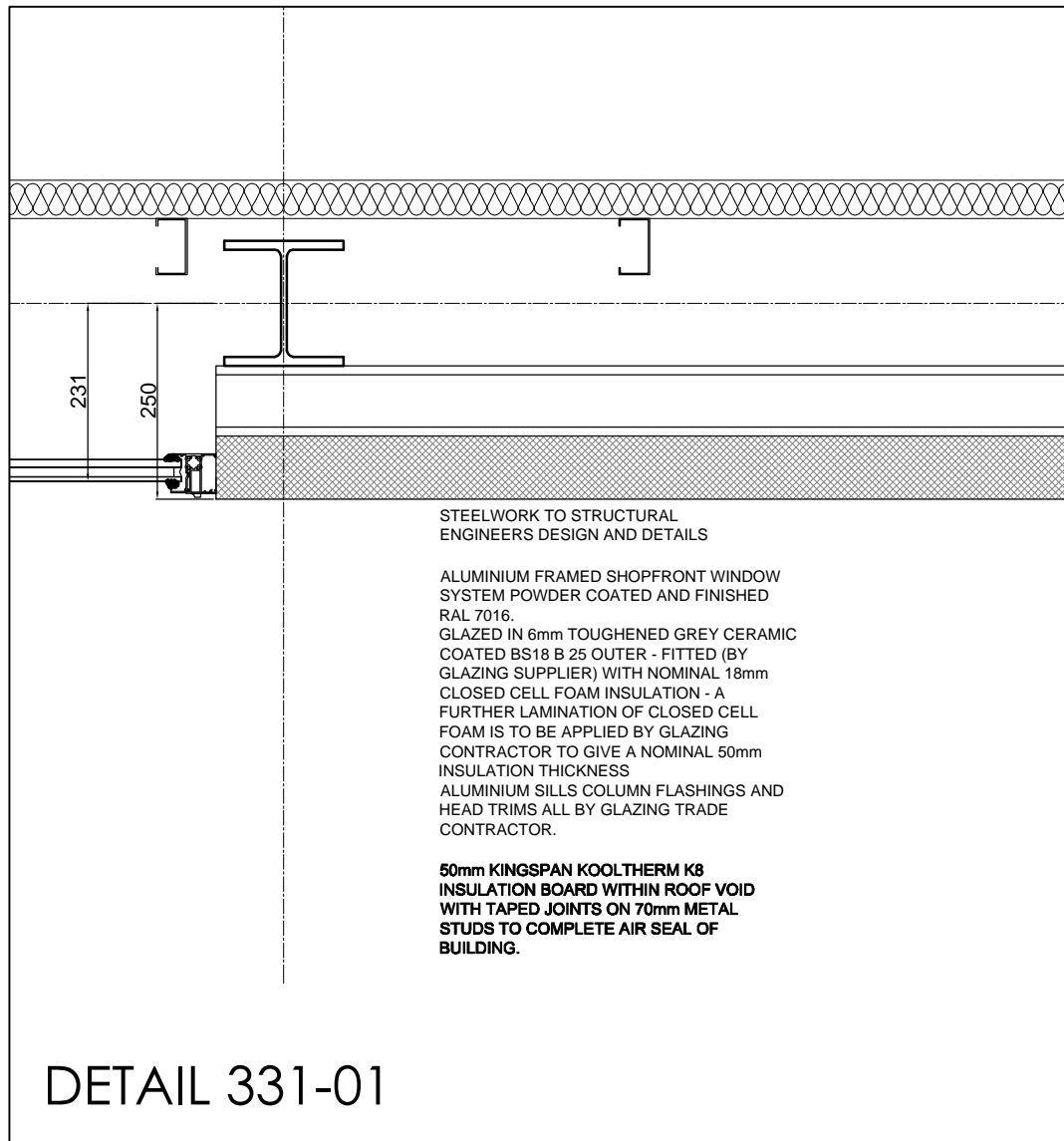
SUPPLIED BY METALWORK TRADE CONTRACTOR



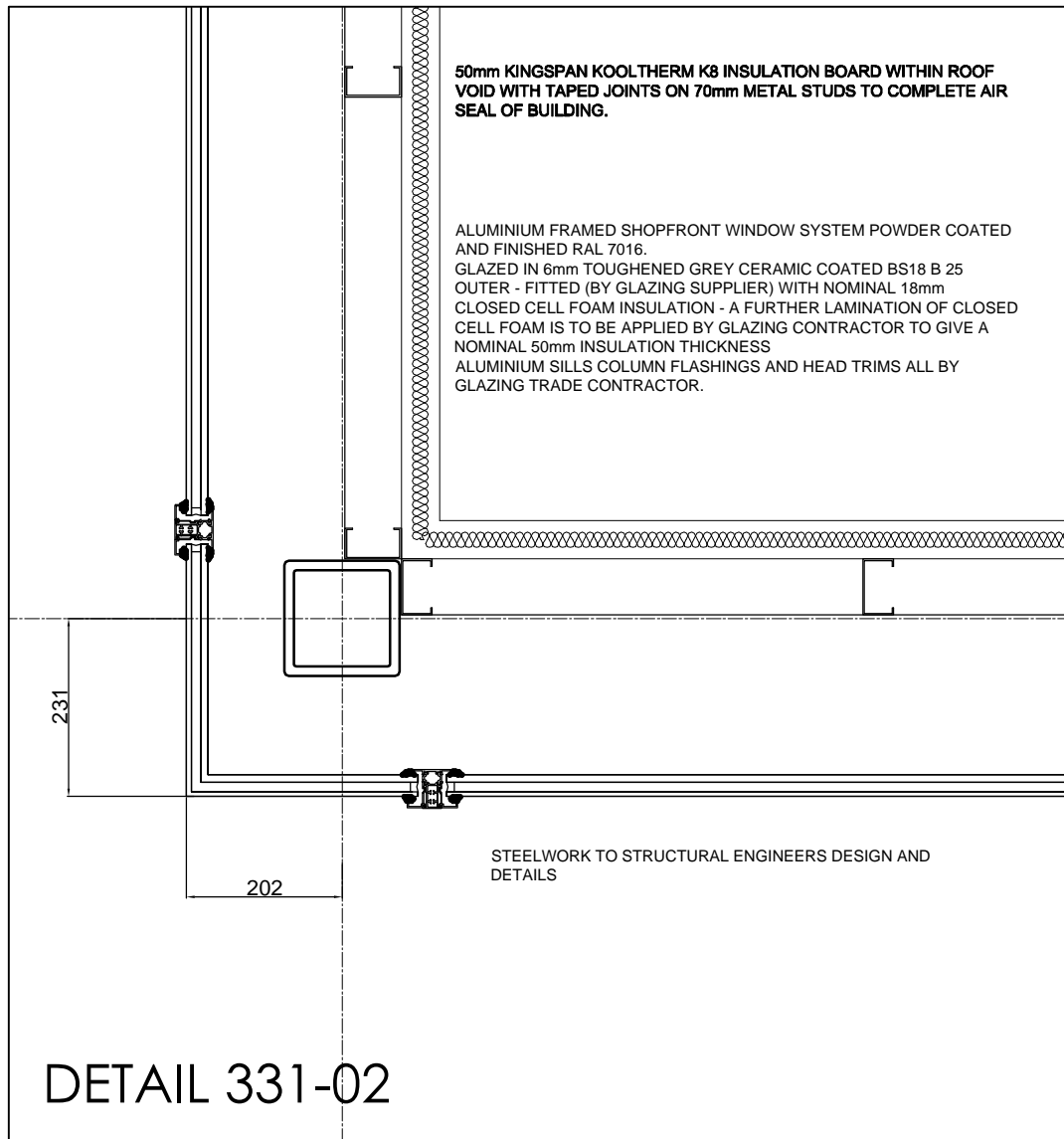
**SHUTTER KEY SWITCH
DETAIL - SCALE 1:10**

2NO. DOOR KEY SWITCH BOXES TO BE MOUNTED CENTRALLY WITHIN DOOR REVEAL REVEALS AT 1600mm & 1800mm AFFL.

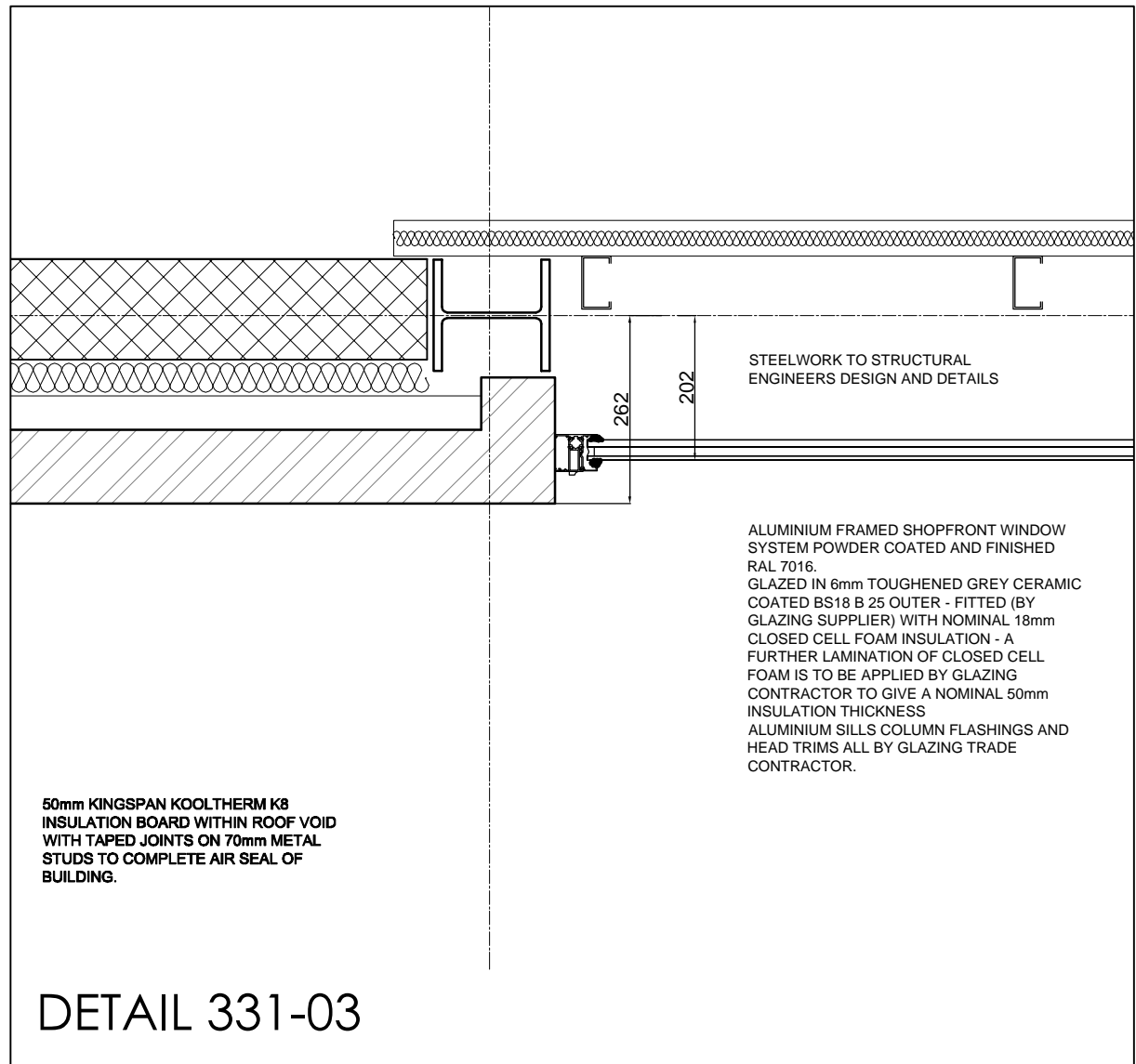
KEY SWITCHES TO BE LOCATED WITHIN DOOR REVEAL CLOSEST TO BUILDING CORNER BETWEEN ENTRANCE/EXIT DOORS AND SHOPFRONT.



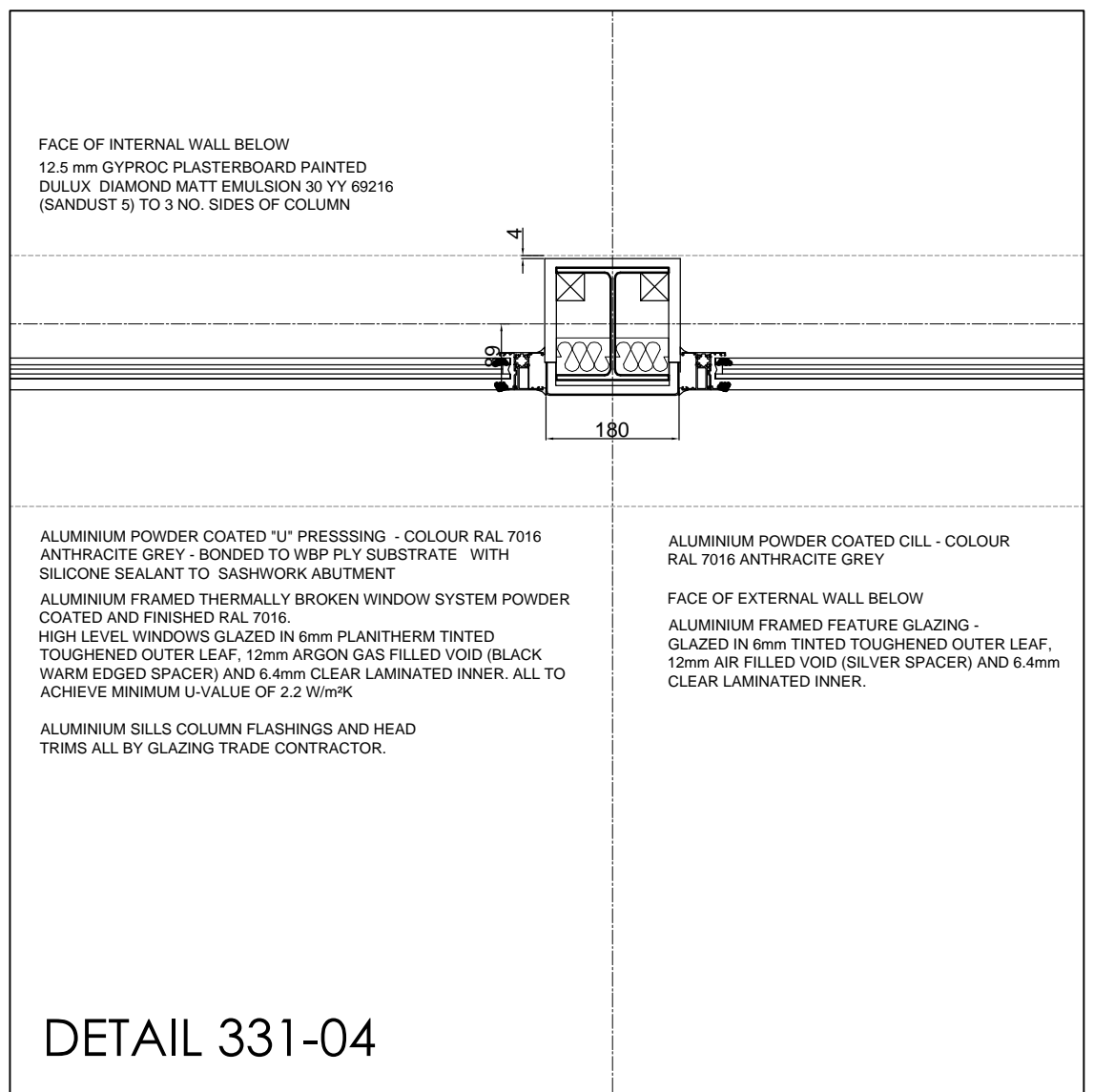
DETAIL 331-01



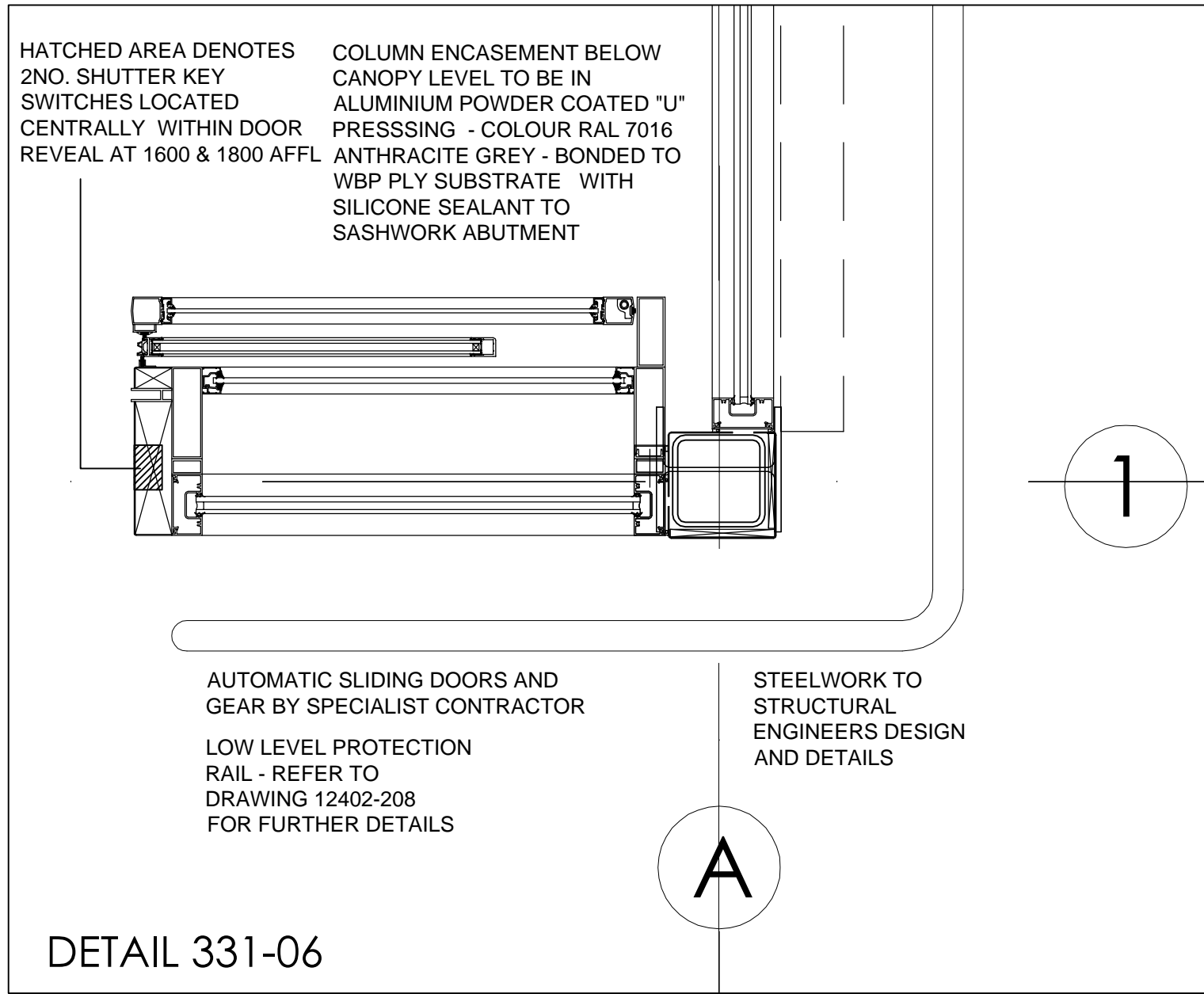
DETAIL 331-02



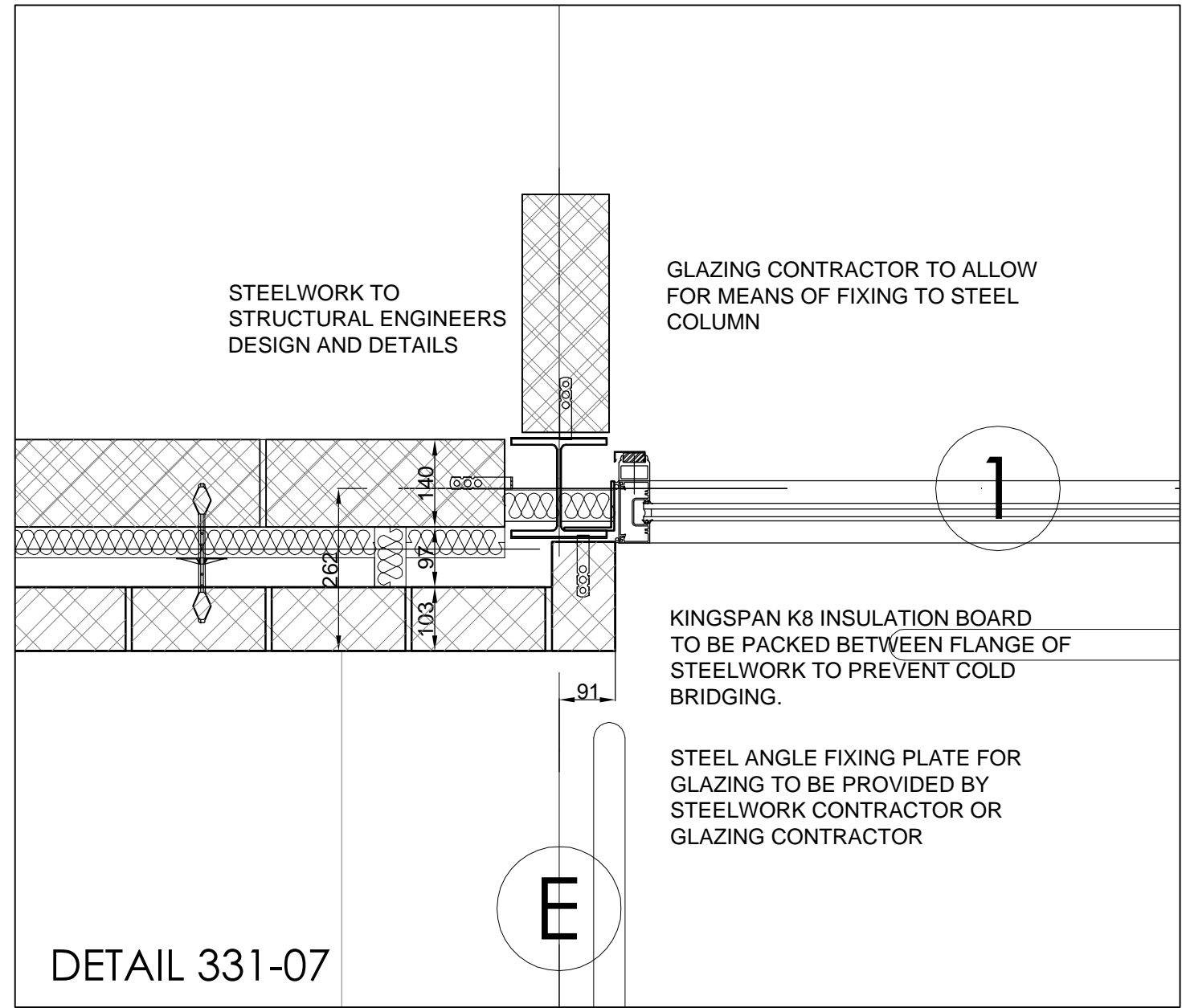
DETAIL 331-03



DETAIL 331-04



DETAIL 331-06



DETAIL 331-07

A	18.06.15	CONSTRUCTION ISSUE	ASH	ash
T1	15-05-15	TENDER ISSUE	ASH	ash
Rev	Date	Description	Rev By	Chk'd
Project Title				
PROPOSED DEVELOPMENT MSDP/ALDI/M&S SIMPLY FOOD STORE QUEENS DRIVE LIVERPOOL				
Client				
SIMONS GROUP LTD				
Status				
CONSTRUCTION				
Scale		1:10	Drawing Size	
			A1	
Drawn By		ASH	Checked By	ash
			Date	05/15
Drawing Title				
GLAZING DETAILS - SHEET 2				
Job-Dwg No			12402-331	Rev A
THE HARRIS PARTNERSHIP WAKEFIELD 231, John North Warehouse, W61 3QA T: 01924 291 800 F: 01924 290 072				
THE HARRIS PARTNERSHIP MANCHESTER 2nd Floor, Carvers Warehouse, 77 Dale Street, Manchester, M1 2HG T: 0161 238 8555 F: 0161 244 5809				
THE HARRIS PARTNERSHIP MILTON KEYNES The Old Rectory, 79 High Street Newport Pagnell, MK16 8AB T: 01908 211 577 F: 01908 211 722				
THE HARRIS PARTNERSHIP READING 101 London Road, Reading, RG1 5BY T: 0118 950 7700 F: 0118 956 8642				
THE HARRIS PARTNERSHIP ARCHITECTS www.harrispartnership.com				