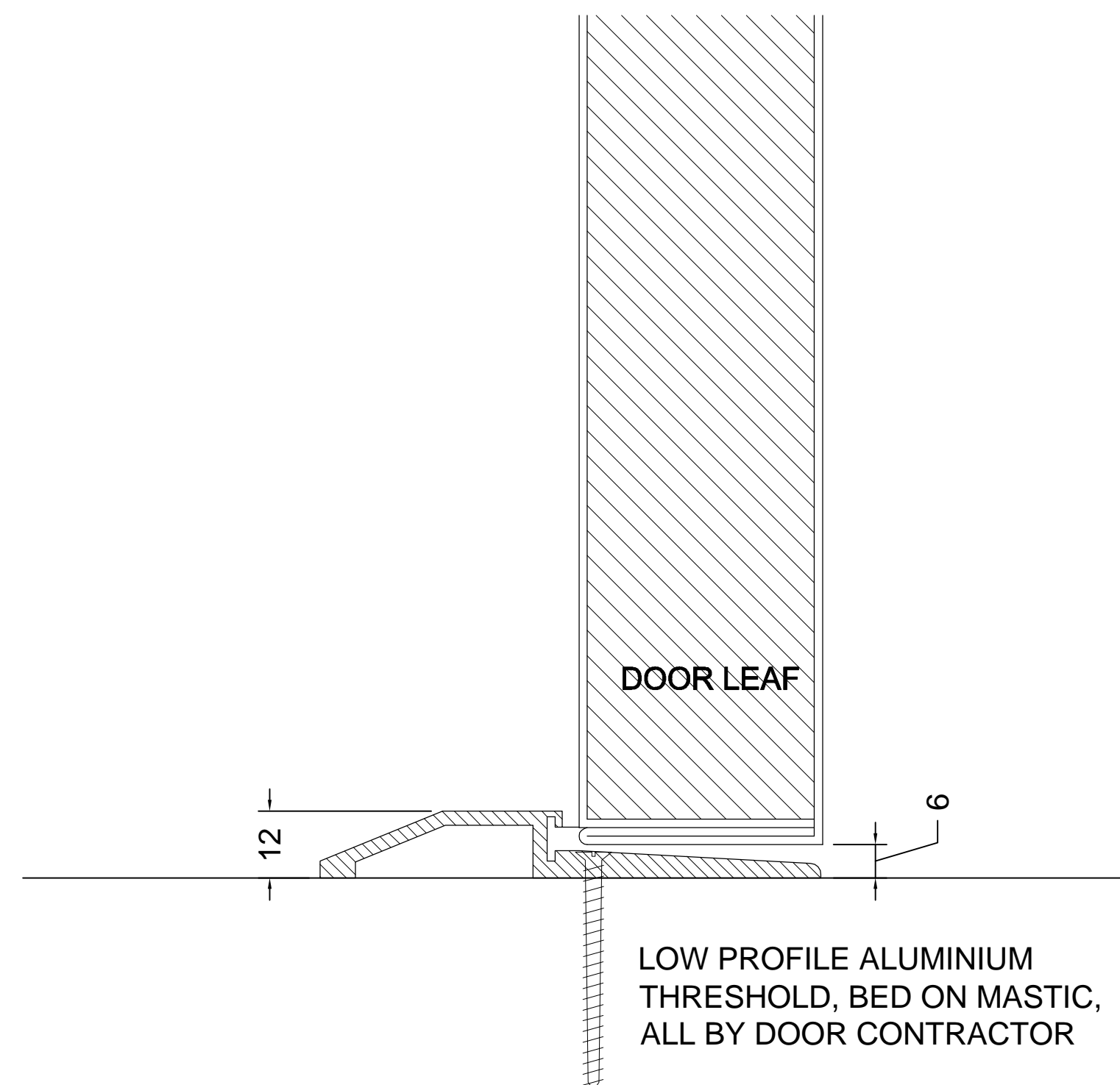
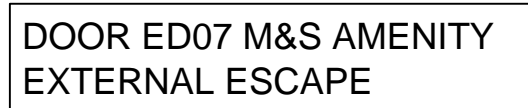


DOOR NO. LOCATION DOOR SWING STRUCTURAL OPENING FRAME SIZE FRAME MATERIAL & FINISH DOOR LEAF SIZE	ED06 DOOR TYPE EDT5 WAREHOUSE - DELIVERIES DOOR OPENING ONTO M&S LOADING BAY 2400(X)X2350(h) 2080X75X5120 STEEL, POWDER COATED RAL 7016 1 - 2050X1168X45 1 - 2050X1168X45
DOOR LEAF FINISH PAIRS HINGES	STEEL, POWDER COATED RAL 7016 3 PAIR HEAVY DUTY BEARING HINGES WITH DORMA TS83 BC
DOOR CLOSERS	2 NO PUSH SIDE MOUNTED DORMA TS83 BC CLOSER WITH ADJUSTABLE POWER SIZE 2-6, WITH SPECIAL SLIDE ARM TO ACT AS 90° HOLD OPEN & LIMIT STAY.
OTHER ITEMS	PANIC HARDWARE - SURELOCK MCGILL SLIMLINE 3 POINT PANIC EXIT DEVICE REF. SL304-00-W3 WEATHER SEALS TO FRAME & ALUMINIUM THRESHOLD STRIP / DRIP INTEGRAL WITH DOOR FRAME. ASTRAGAL TO DOOR LEAF LEADING EDGE OF ACTIVE DOOR TO COVER FRAME. ALL FRAME SEALANT - EVERBUILD EVERFLEX, COLOUR GREY.
KICK PLATES	1NO. 200mm HIGH x 1000mm, SATIN STAINLESS STEEL COUNTERSUNK FLUSH FINISH. 1NO. 200mm HIGH x 400 SATIN STAINLESS STEEL COUNTERSUNK FLUSH FINISH
SIGNS - BY SUPPLIER	1no. 600x100mm GREEN 'PUSH BAR TO OPEN' - INTERNAL 1NO. 200x200MM 'FIRE EXIT KEEP CLEAR' - EXTERNAL 1NO. 600x200mm 'FIRE EXIT RUNNING MAN' - INTERNAL DOUBLE REED SECURITY DOOR CONTACT BY
SECURITY CONTACTS CQR SECURITY REF FC 570 LOCKING SUITING FIRE RESISTANCE	N/A N/A

DOOR NO.	ED07 DOOR TYPE EDT6
LOCATION	AMENITY AREA LOBBY - EXTERNAL ESCAPE
DOOR SWING	OPENING SERVICE YARD AREA
STRUCTURAL OPENING	2100x1010
FRAME SIZE	2090x1000x120
FRAME MATERIAL & FINISH	STEEL, POWDER COATED RAL 7016
DOOR LEAF SIZE	1NO 2050x914x45
DOOR LEAF FINISH	STEEL, POWDER COATED RAL 7016
PAIRS HINGES	1.5 PAIR HEAVY DUTY BEARING HINGES WITH DOGBOLT (SSS)
DOOR CLOSERS	1 NO PUSH SIDE MOUNTED DORMA TS83 BC CLOSER
OTHER ITEMS	PANIC HARDWARE - SURELOCK MCGILL SLIMLINE 3 POINT PANIC EXIT DEVICE RF SL 304-00-W3 WITH GREEN (RAL 6024) PUSH BAR WEATHER SEALS TO FRAME & ALUMINIUM THRESHOLD. ASTRAGAL LIP TO DOOR LEAF LEADING EDGE TO COVER FRAME. ALL FRAME SEALANT - EVERBUILD EVERFLEX, COLOUR GREY.
KICK PLATES	1NO. 200mm HIGH x 1050mm, SATIN STAINLESS STEEL COUNTERSUNK FLUSH FINISH.
SIGNS - BY SUPPLIER	1NO. 600x100mm GREEN 'PUSH BAR TO OPEN' INTERNAL 1NO. 200x200mm 'FIRE EXIT KEEP CLEAR' - EXTERNAL 1NO. 600x200mm 'FIRE EXIT RUNNING MAN' - INTERNAL
SECURITY CONTACTS	DOUBLE REED SECURITY DOOR CONTACT BY CQR SECURITY REF FC 570
LOCKING SUITING	N/A
FIRE RESISTANCE	N/A



NOTE - CLEAR STRUCTURAL
OPENING SIZES ARE SUBJECT TO
A SITE SURVEY BY DOOR TRADE
CONTRACTOR

ALL MASTIC IS INTUMESCENT BY
DOOR TRADE CONTRACTOR
(DOW CORNING 797 WEATHERSEAL
SILICONE SEALANT - COLOUR
GREY)

FOR DETAILS OF HEAD JAMB AND
THRESHOLD REFER TO DRAWING
12402-327

B	08.07.15	RAL COLOURS UPDATED	ASH	ash
A	18.06.15	CONSTRUCTION ISSUE	ASH	ash
T1	15-05-15	TENDER ISSUE	ASH	ash
Rev	Date	Description	Rev By	Chkd By

Project Title	PROPOSED DEVELOPMENT MSPD /ALDI/M&S SIMPLY FOOD STORE QUEENS DRIVE LIVERPOOL				
Client	SIMONS GROUP LTD				
Status	CONSTRUCTION				
Scale	1:20		Drawing Size	A1	
Drawn By	ASH	Checked By	ash	Date	05/15
Drawing Title	EXTERNAL DOOR DETAILS - ALDI - SHEET 2				
Job-Dwg No	12402-326			Rev	B

☐ THE HARRIS PARTNERSHIP WAKEFIELD
251, John North, Wakefield, WFT 3QA
t. 01924 291 800 f. 01924 290 072

☒ THE HARRIS PARTNERSHIP MANCHESTER
2nd Floor, Carvers Warehouse,
77 Dole Street, Manchester, M1 2HG
t. 0161 238 8555 f. 0161 244 5809

☐ THE HARRIS PARTNERSHIP MILTON KEYNES
The Old Rectory, 79 High Street
Newport Pagnell, MK16 8AB
t. 01908 211 577 f. 01908 211 722

☐ THE HARRIS PARTNERSHIP READING
101 London Road, Reading, RG1 5BY
t. 0118 950 7700 f. 0118 956 8642



ARCHITECTS