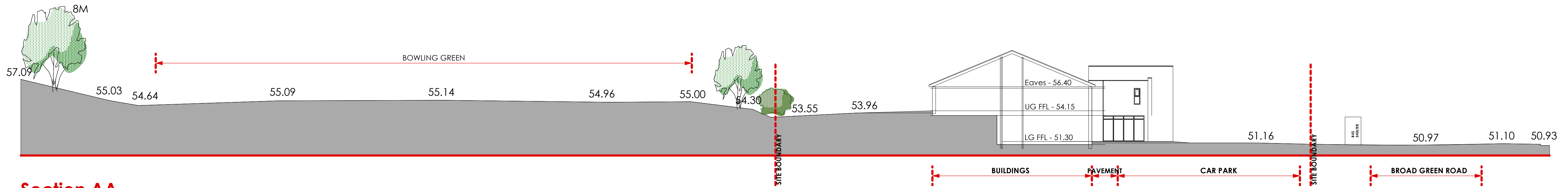


Section BB



Section AA

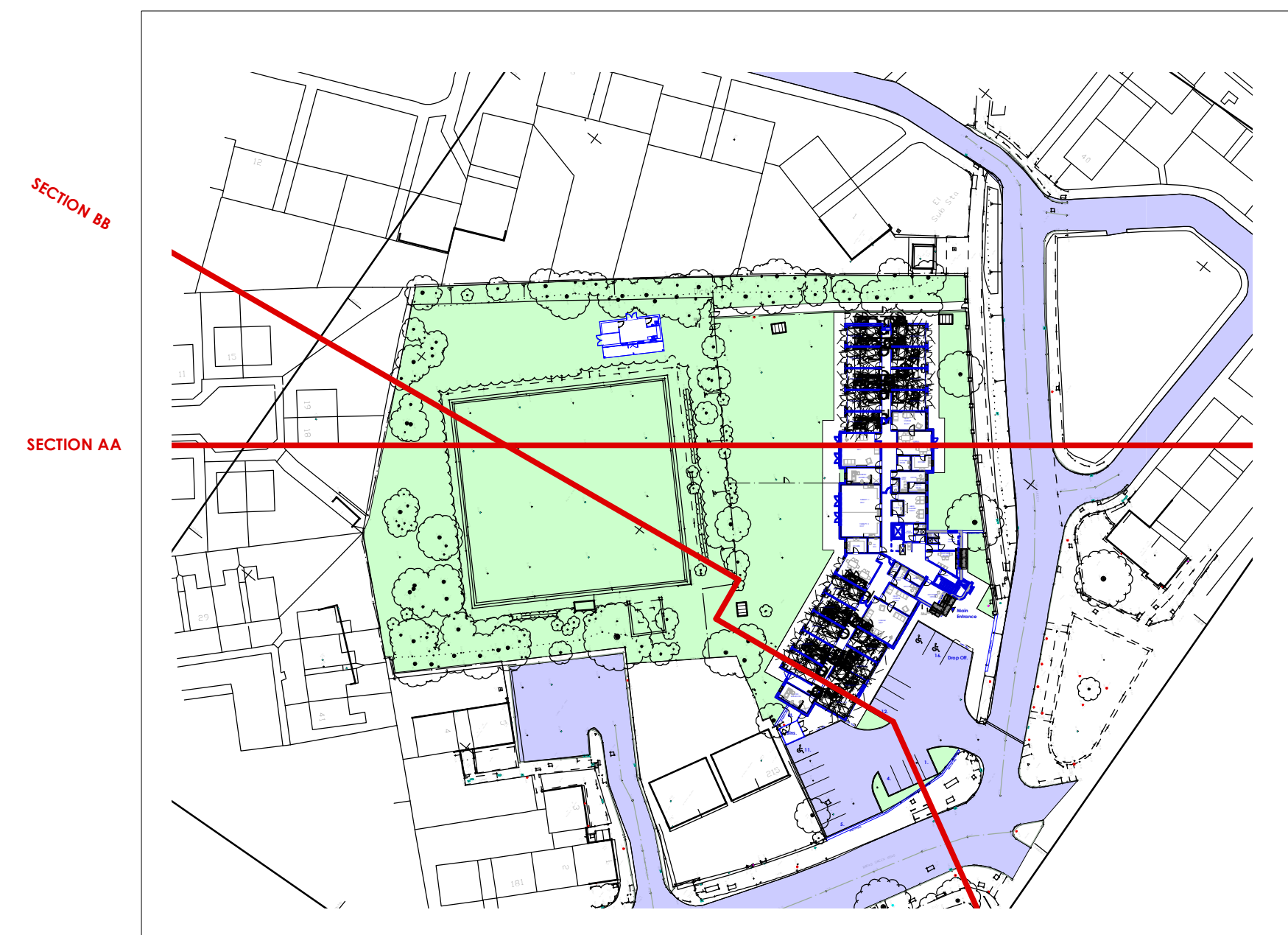
NOTES

- The drawing is copyright of Candy Lofthouse Ltd and may not be reproduced in any way without their specific permission.
- All dimensions are to be checked on site. Do not use from this drawing work to any other drawing unless they have been checked for accuracy.

MATERIALS PROHIBITED

- Materials prohibited from use, except where used in accordance with 'good practice' in the selection of construction materials (BS2000).
- High strength cement in load bearing structures.
- Reinforced concrete used as permanent cladding or structural elements.
- Concrete should be used as an additive in mixing concrete for use in reinforced concrete.
- Aggregates for use in reinforced concrete which do not comply with either standard specification or current state of specification of the materials.
- Concrete should be used in the form of concrete.
- Asbestos or asbestos based products including insulations.
- Lead or any materials containing lead which may be ingested, inhaled or absorbed.
- Any hazardous waste or materials which may be hazardous with reference to the limits set by the Health & Safety Executive of the state of specification of the materials.
- Materials which are generally composed of mineral fibres other than wool or mineral wool which have a diameter of 5 microns or less and a length of 200 microns or less, or which contain any fibres not labelled or otherwise prohibited to ensure that their ingestion is prevented.

Key Plan
Scale 1:1000



- REVISIONS
- Preliminary
- For Approval
- Tender
- Construction
- Seddon Construction Ltd
- PROJEC
- Broad Green House, Liverpool.
- PROPOSED SITE SECTIONS
- Scale: 1:200 @ A1
- Drawn by: MW
- Checked by: rayvion
- 12-001-160



T: 0151 207 4371 • F: 0151 207 7087