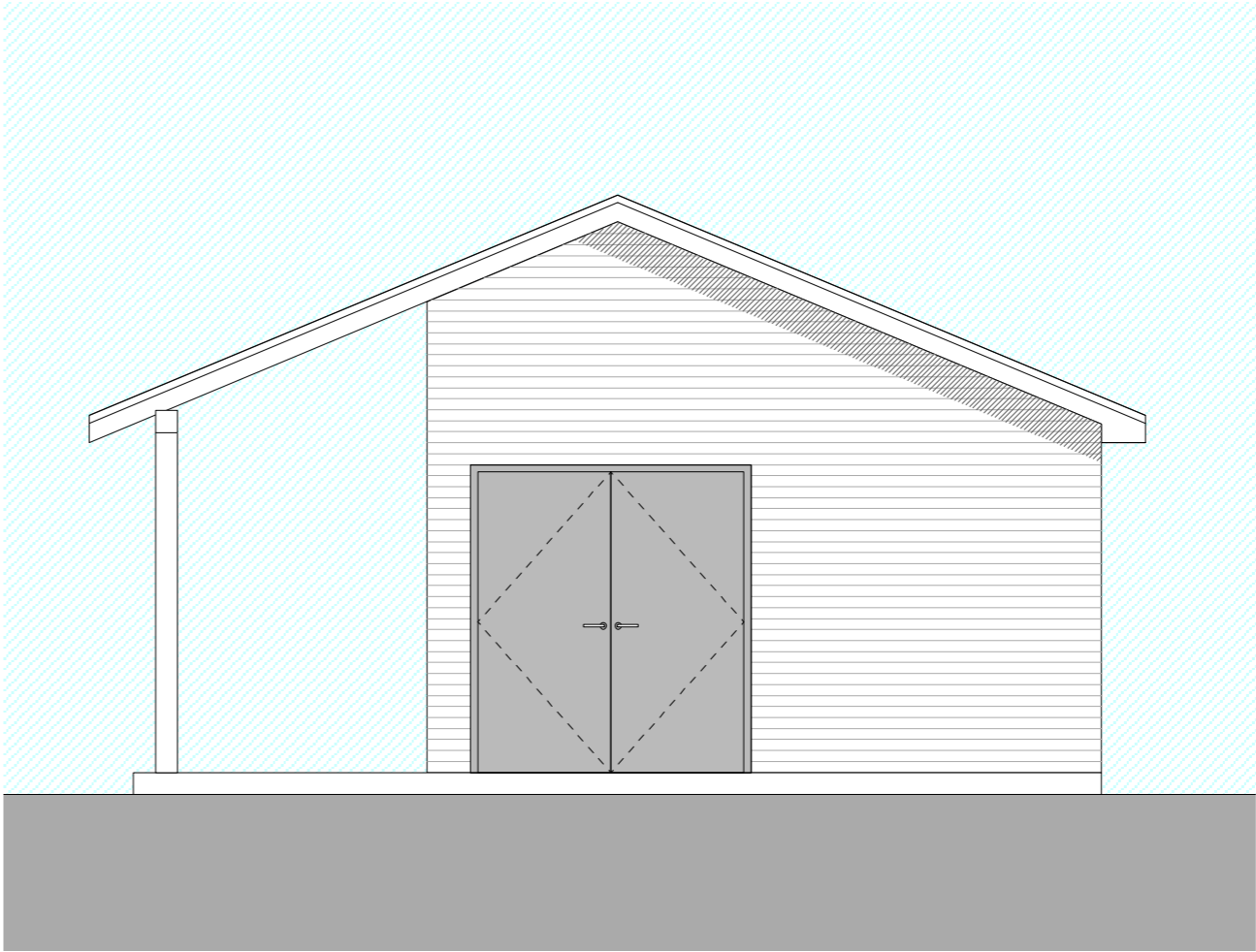
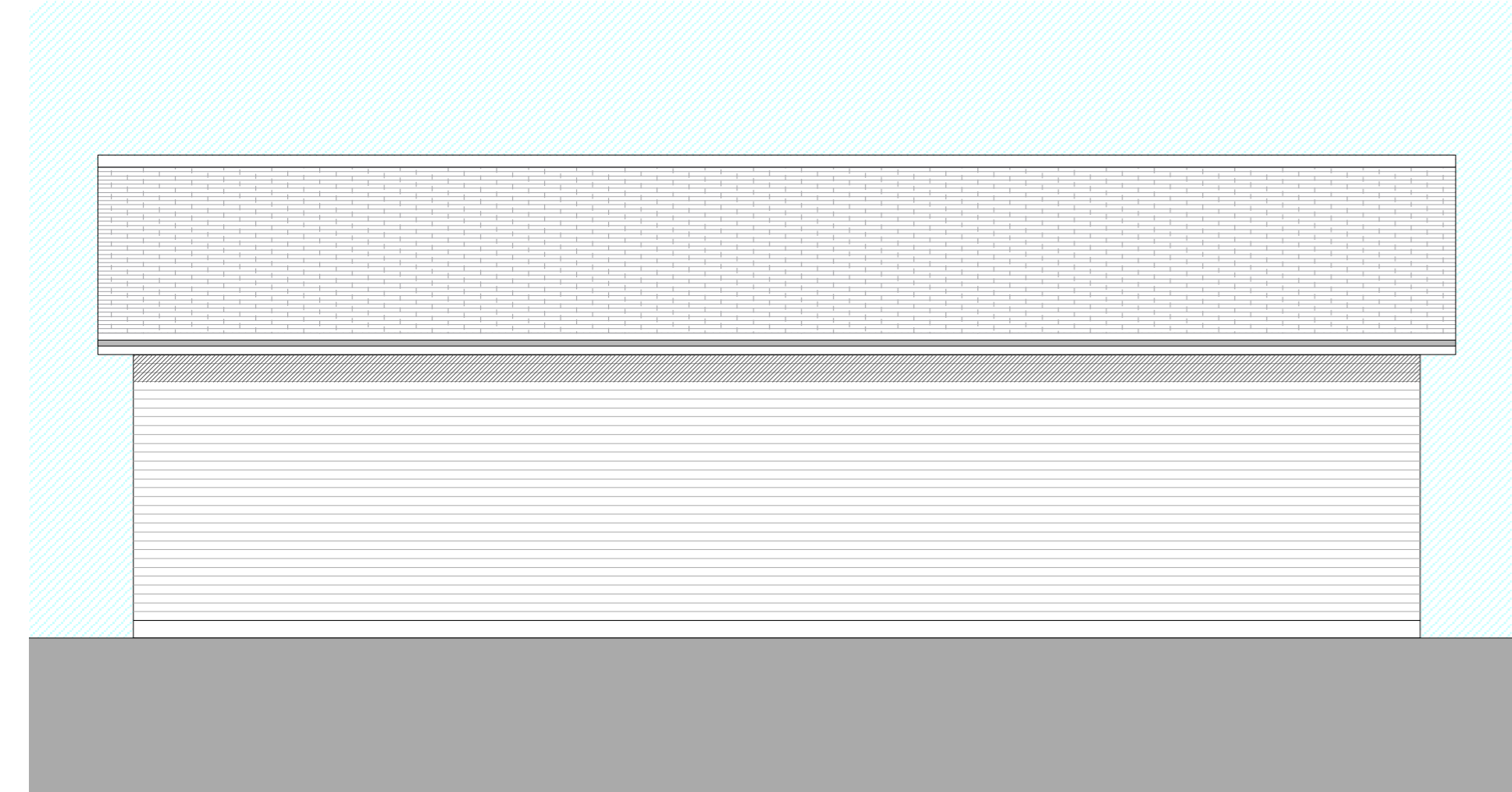




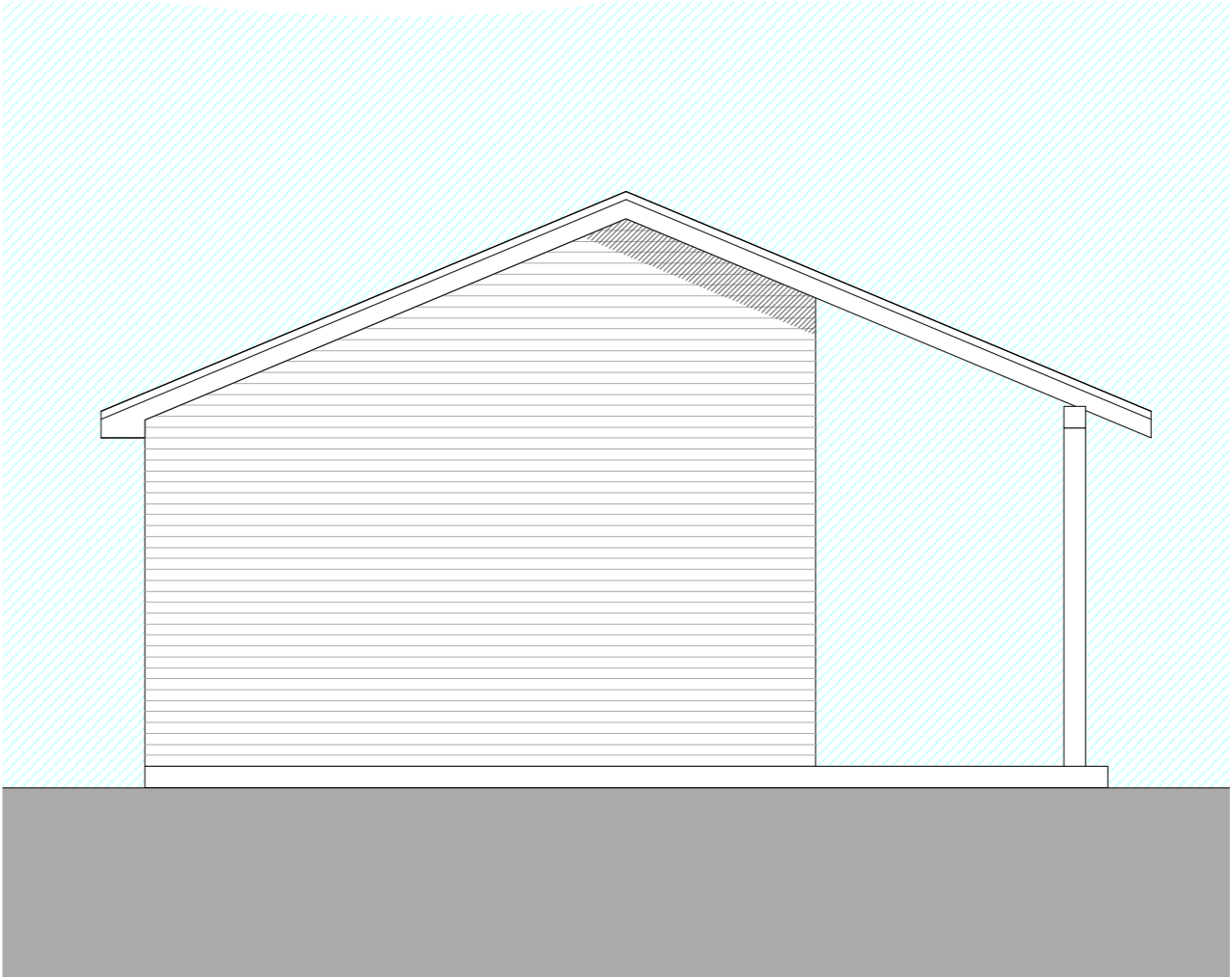
Elevation 1



Elevation 3



Elevation 2



Elevation 4

- NOTES
- This drawing is copyright of Candy and Lofthouse Ltd. and may not be reproduced in any way without their specific permission.
- All dimensions are to be checked on site. Do not scale from this drawing. Work to figured dimensions only. Any queries please contact the architects.
- This drawing has been prepared based upon a digital survey undertaken by Survey Operations, tel 01495 725 662.
- MATERIALS PROHIBITED
- Materials prohibited from use, except where used in accordance with "good practice in the selection of construction materials (2002)"
- a

High alumina cement in load bearing structures.
- b

Wood wool slabs used as permanent shuttering or in structural elements.
- c

Calcium chloride used as an additive in mixing concrete for use in reinforced concrete.
- d

Aggregates for use in reinforced concrete which do not comply with British standard specifications current at the date of specification of the materials.
- e

Calcium silicate bricks or tiles.
- f

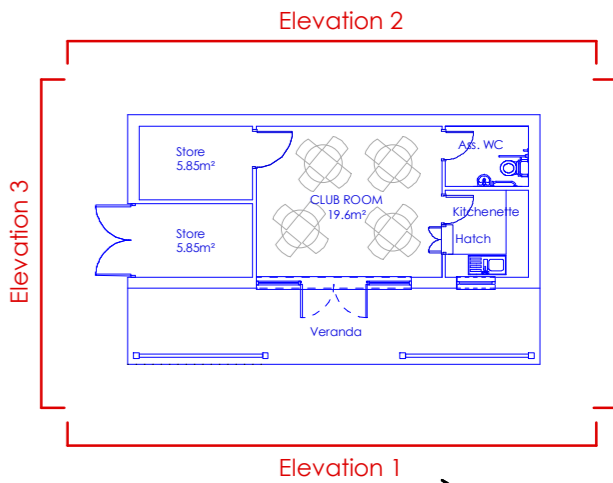
Asbestos or asbestos based products including crocidolite.
- g

Lead or any materials containing lead which may be ingested, inhaled or absorbed.
- h

Used formwork/ply form or materials which may be hazardous, with reference to the limits set by the health & safety executive at the date of specification of the materials.
- i

Materials which are generally composed of mineral fibres either man-made or naturally occurring which have a diameter of 3 microns or less and a length of 200 microns or less or which contain any fibres not sealed or otherwise stabilised to ensure that fibre migration is prevented.

Key Plan
Scale 1:200



REVISION DETAILS

- Preliminary
- For Approval
- Tender
- Construction

Seddon Construction Ltd.

Broad Green House,
Liverpool

Club House Elevations

SCALE 1:50@A2
drawn by MW
date Jun 2012

12-001-152



T: 0151 207 4371 • F: 0151 207 7087

