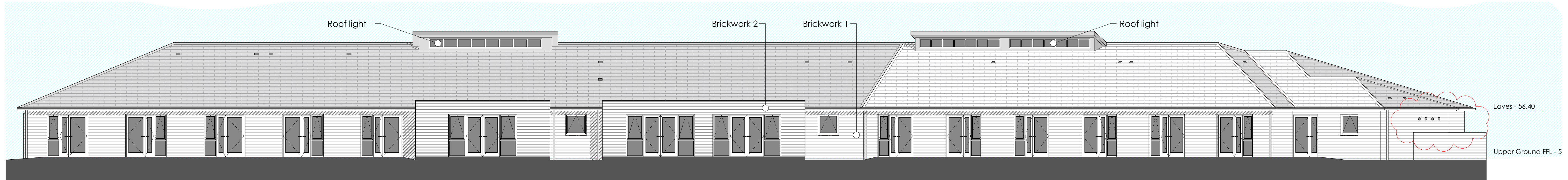
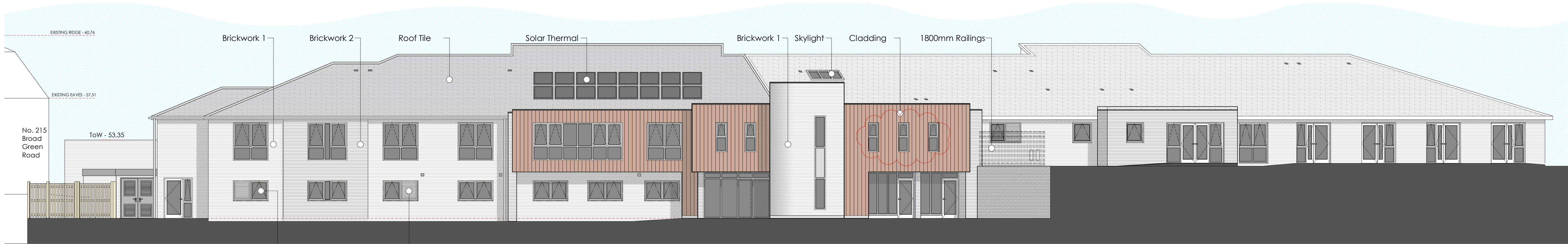


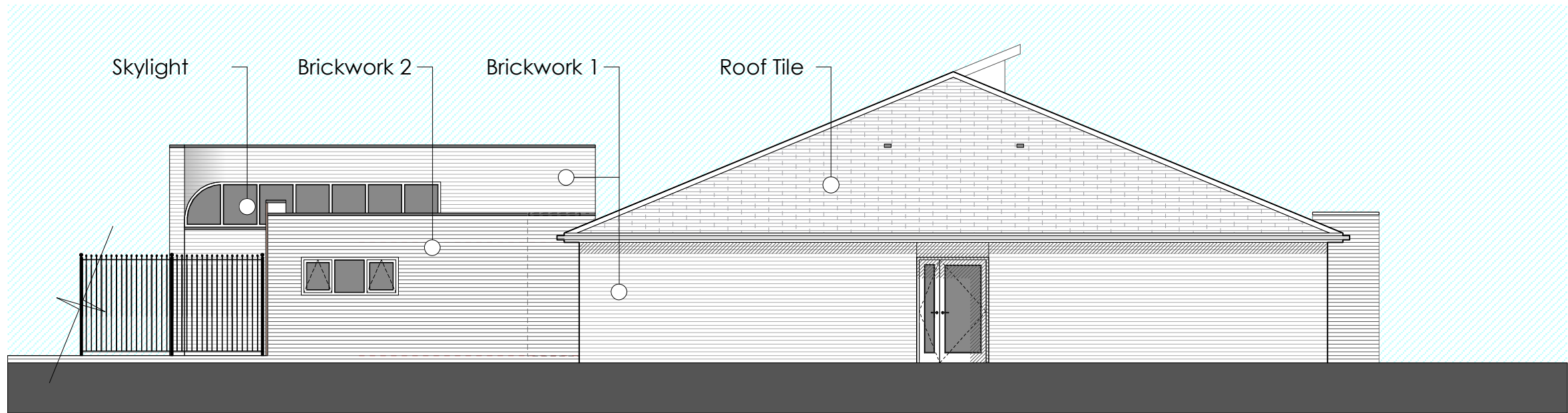
Elevation 1



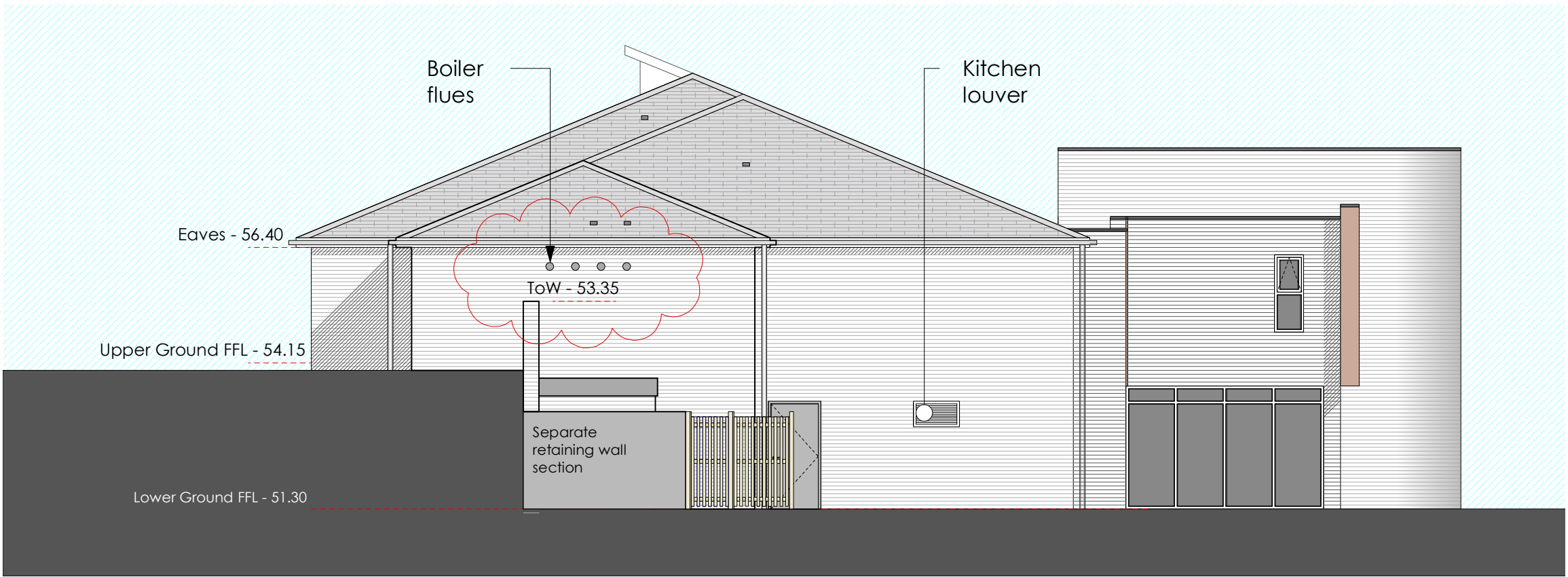
Elevation 2



Elevation 3

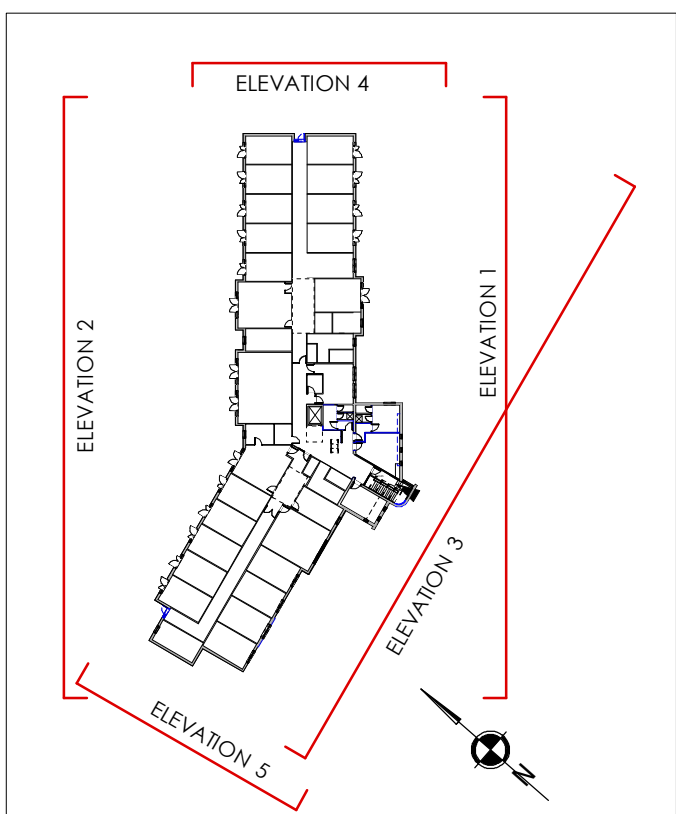


Elevation 4



Elevation 5

Key Plan
Scale 1:1000



- NOTES**
- 1. This drawing is a conceptual design and is not to be used for construction purposes.
 - 2. All dimensions are to be checked on site. Do not scale from this drawing.
 - 3. Material prohibited from use, except where used in accordance with good practice in the selection of construction materials (2012).
- MATERIALS PROHIBITED**
- 1. High strength cement in load bearing structures.
 - 2. Metal work used in permanent structures or in structural elements.
 - 3. Calcium chloride used in concrete or in concrete for any reinforced concrete.
 - 4. Aggregates for use in reinforced concrete which do not comply with British Standard BS 5877.
 - 5. Calcium chloride in concrete.
 - 6. Asbestos or asbestos containing products in building materials.
 - 7. Lead or any material containing lead which may be ingested, absorbed or absorbed.
 - 8. Any form of asbestos in any material which may be ingested or absorbed.
 - 9. Material which is generally considered to be a fire hazard or a fire hazard.
 - 10. Material which is generally considered to be a fire hazard or a fire hazard.
 - 11. Material which is generally considered to be a fire hazard or a fire hazard.
 - 12. Material which is generally considered to be a fire hazard or a fire hazard.
 - 13. Material which is generally considered to be a fire hazard or a fire hazard.
 - 14. Material which is generally considered to be a fire hazard or a fire hazard.
 - 15. Material which is generally considered to be a fire hazard or a fire hazard.
 - 16. Material which is generally considered to be a fire hazard or a fire hazard.
 - 17. Material which is generally considered to be a fire hazard or a fire hazard.
 - 18. Material which is generally considered to be a fire hazard or a fire hazard.
 - 19. Material which is generally considered to be a fire hazard or a fire hazard.
 - 20. Material which is generally considered to be a fire hazard or a fire hazard.

- Window added to elevation 3. Boiler flues repositioned.
- Solar Thermal panel location indicated on the roof. Additional door shown. 2012-08-14 MW
- REVISIONS**
- | NO. | DATE | BY |
|-----|------------|----|
| 1 | 2012-09-07 | JC |
| 2 | 2012-08-14 | MW |
- Legend**
- Preliminary
 - For Approval
 - Tender
 - Construction
- CLIENT**
- Seddon Construction Ltd
- PROJECT**
- Broad Green House, Liverpool.
- DRAWING TITLE**
- Elevations
- SCALE**
- 1:100 @ A1
- DRAWING NO.**
- 12-001-150
- DATE**
- Mar 2012
- REVISION**
- (B)
- CLA**
Candy Liffhouse Architects
- T: 0151 207 4371 • F: 0151 207 7087