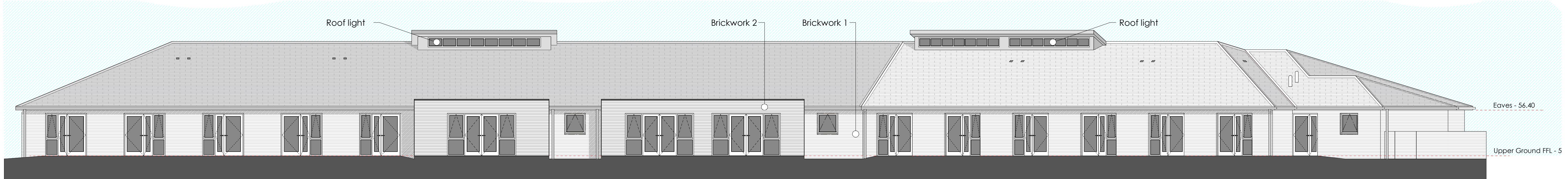


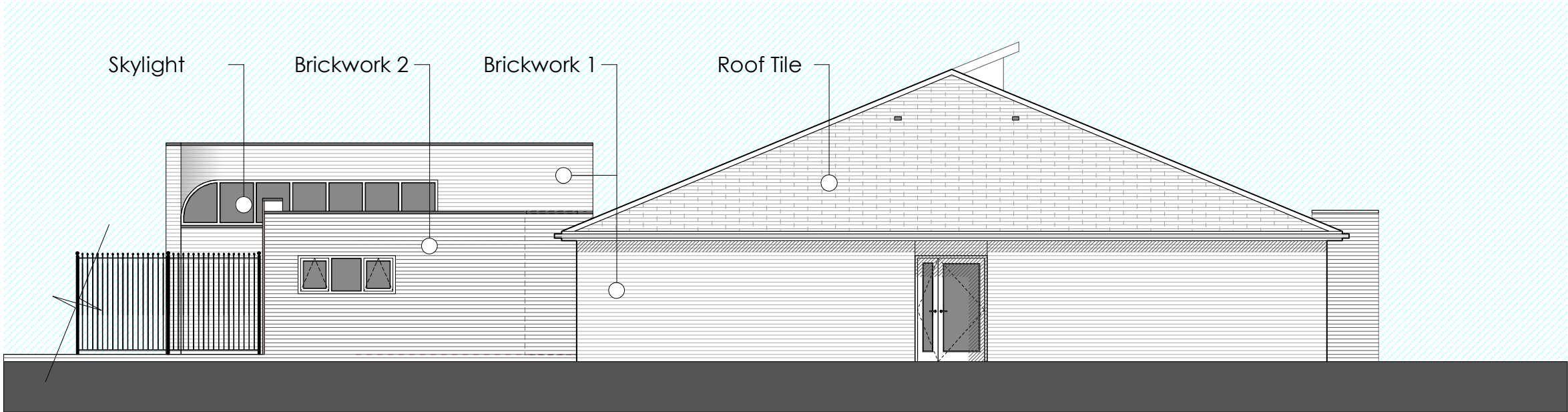
Elevation 1



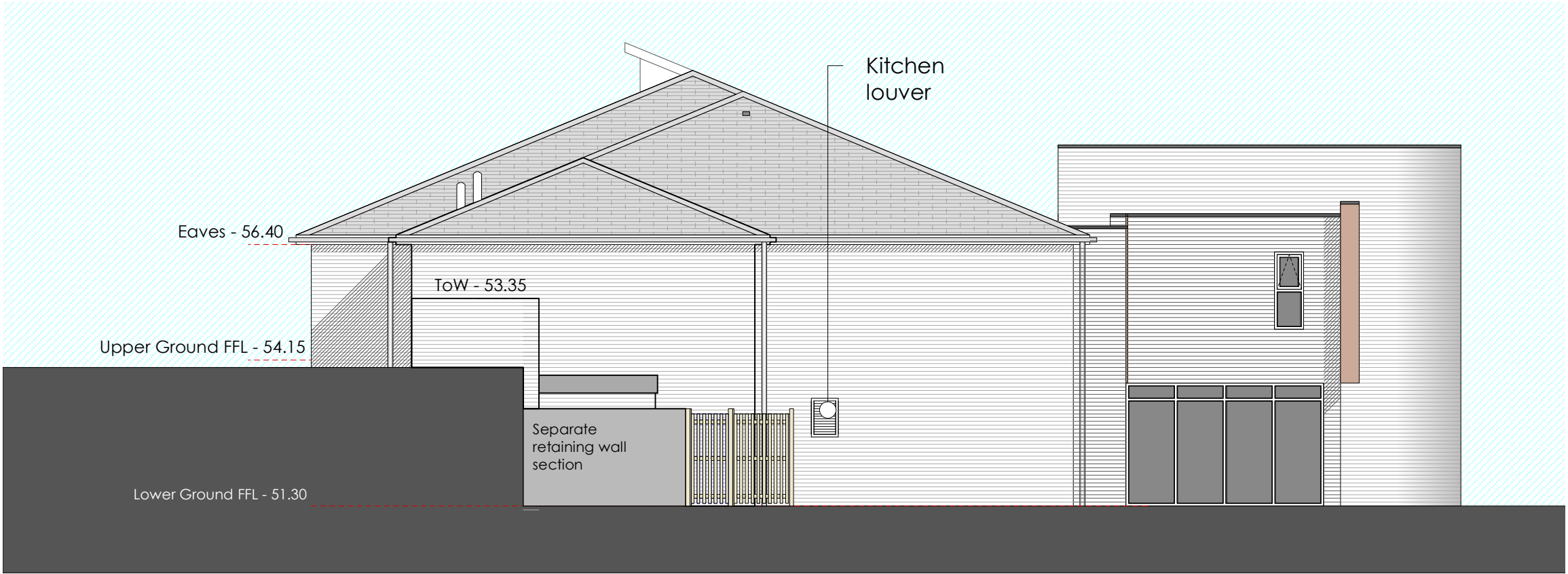
Elevation 2



Elevation 3

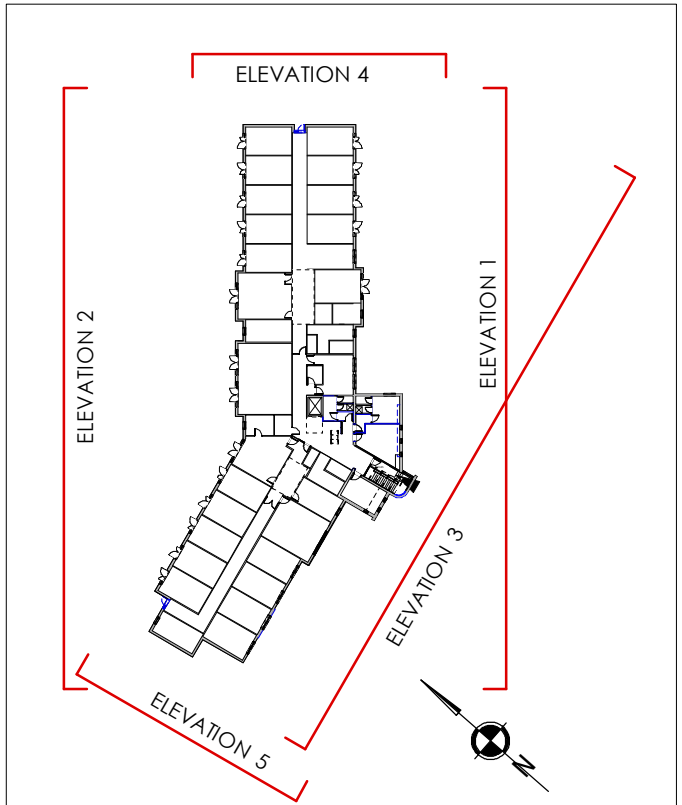


Elevation 4



Elevation 5

Key Plan
Scale 1:1000



- NOTES**
- 1. This drawing is a conceptual design and is not to be used for construction purposes.
 - 2. All dimensions are to be checked on site. Do not scale from this drawing.
 - 3. All dimensions are to be checked on site. Do not scale from this drawing.
 - 4. All dimensions are to be checked on site. Do not scale from this drawing.
- MATERIALS PROHIBITED**
- 1. High strength concrete in load bearing structures.
 - 2. Alkali resistant glass in partition walls or in structural elements.
 - 3. Calcium chloride used in or added to concrete for early strength gain.
 - 4. Aggregates for use in reinforced concrete which do not comply with British Standard BS 5877.
 - 5. Aggregates for use in the production of concrete which do not comply with British Standard BS 5877.
 - 6. Calcium chloride used in or added to concrete for early strength gain.
 - 7. Calcium chloride used in or added to concrete for early strength gain.
 - 8. Calcium chloride used in or added to concrete for early strength gain.
 - 9. Calcium chloride used in or added to concrete for early strength gain.
 - 10. Calcium chloride used in or added to concrete for early strength gain.
 - 11. Calcium chloride used in or added to concrete for early strength gain.
 - 12. Calcium chloride used in or added to concrete for early strength gain.
 - 13. Calcium chloride used in or added to concrete for early strength gain.
 - 14. Calcium chloride used in or added to concrete for early strength gain.
 - 15. Calcium chloride used in or added to concrete for early strength gain.
 - 16. Calcium chloride used in or added to concrete for early strength gain.
 - 17. Calcium chloride used in or added to concrete for early strength gain.
 - 18. Calcium chloride used in or added to concrete for early strength gain.
 - 19. Calcium chloride used in or added to concrete for early strength gain.
 - 20. Calcium chloride used in or added to concrete for early strength gain.

- REVISIONS**
- | NO. | DATE | BY |
|-----|------|----|
| 1 | | |
| 2 | | |
| 3 | | |
| 4 | | |
| 5 | | |
- CLIENT**
- Seddon Construction Ltd
- PROJECT**
- Broad Green House,
Liverpool.
- DRAWING TITLE**
- Elevations
- SCALE**
- 1:100 @ A1
- DRAWN BY**
- MW
- DATE**
- Mar 2012
- REVISION**
- 12-001-150
- CLA**
Candy Liffhouse Architects
- T: 0151 207 4371 • F: 0151 207 7087