

NOTES

This drawing is copyright of Candy and Lofthouse Ltd. and may not be reproduced in any way without their specific permission.

All dimensions are to be checked on site. Do not scale from this drawing, work to figured dimensions only. Any queries please contact the architect.

This drawing has been prepared based upon a digital survey undertaken by Survey Operations, tel 01895 725 662.

MATERIALS PROHIBITED

Materials prohibited from use, except where used in accordance with 'good practice' in the selection of construction materials [2002]

a. High alumina cement in load bearing structures.

b. Wood wool slabs used as permanent shuttering or in structural elements.

c. Calcium chloride used as an additive in making concrete for use in reinforced concrete.

d. Aggregates for use in reinforced concrete which do not comply with British standard specifications current at the date of specification of the materials.

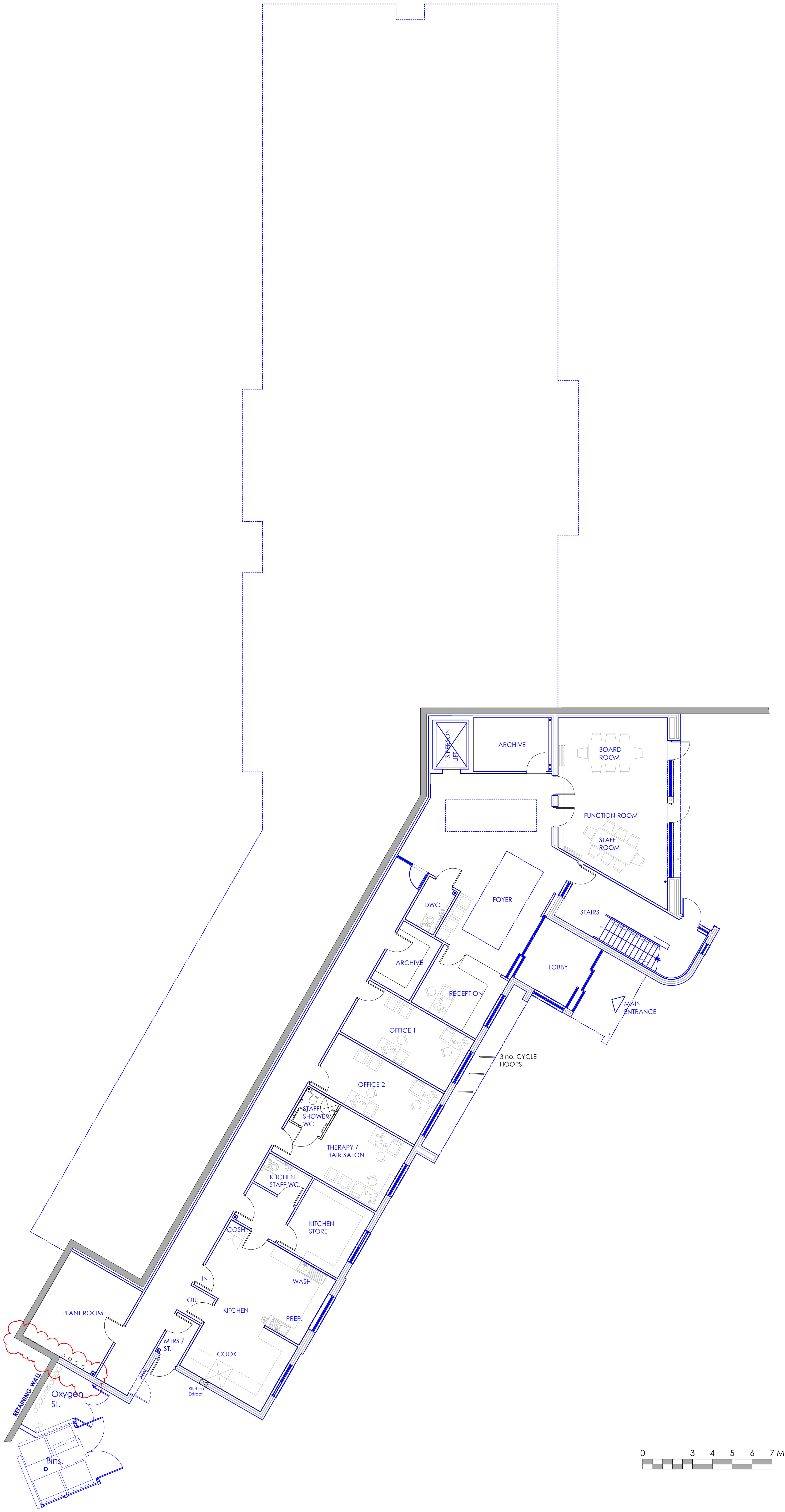
e. Calcium silicate bricks or tiles.

f. Asbestos or asbestos based products including crocidolite.

g. Lead or any materials containing lead which may be ingested, inhaled or absorbed.

h. Urea formaldehyde foam or materials which may be hazardous with reference to the limits set by the health & safety executive of the date of specification of the materials.

i. Materials which are generally composed of mineral fibres either man-made or naturally occurring which have a diameter of 3 microns or less and a length of 200 microns or less, or which contain any fibres not sealed or otherwise stabilised to ensure that fibre migration is prevented.



Boiler flue ducts repositioned 24-09-2012 MW

REVISION DETAILS date / by

Preliminary

For Approval

Tender

Construction

CLIENT

Seddon Construction Ltd.

PROJECT

Broad Green House, Liverpool

DRAWING TITLE

Lower Ground Floor Plan

SCALE drawn by date

1:100@A1 MW Jun 2012

DRAWING NO revision

12-001-120 (A)



T: 0151 207 4371 • F: 0151 207 7087