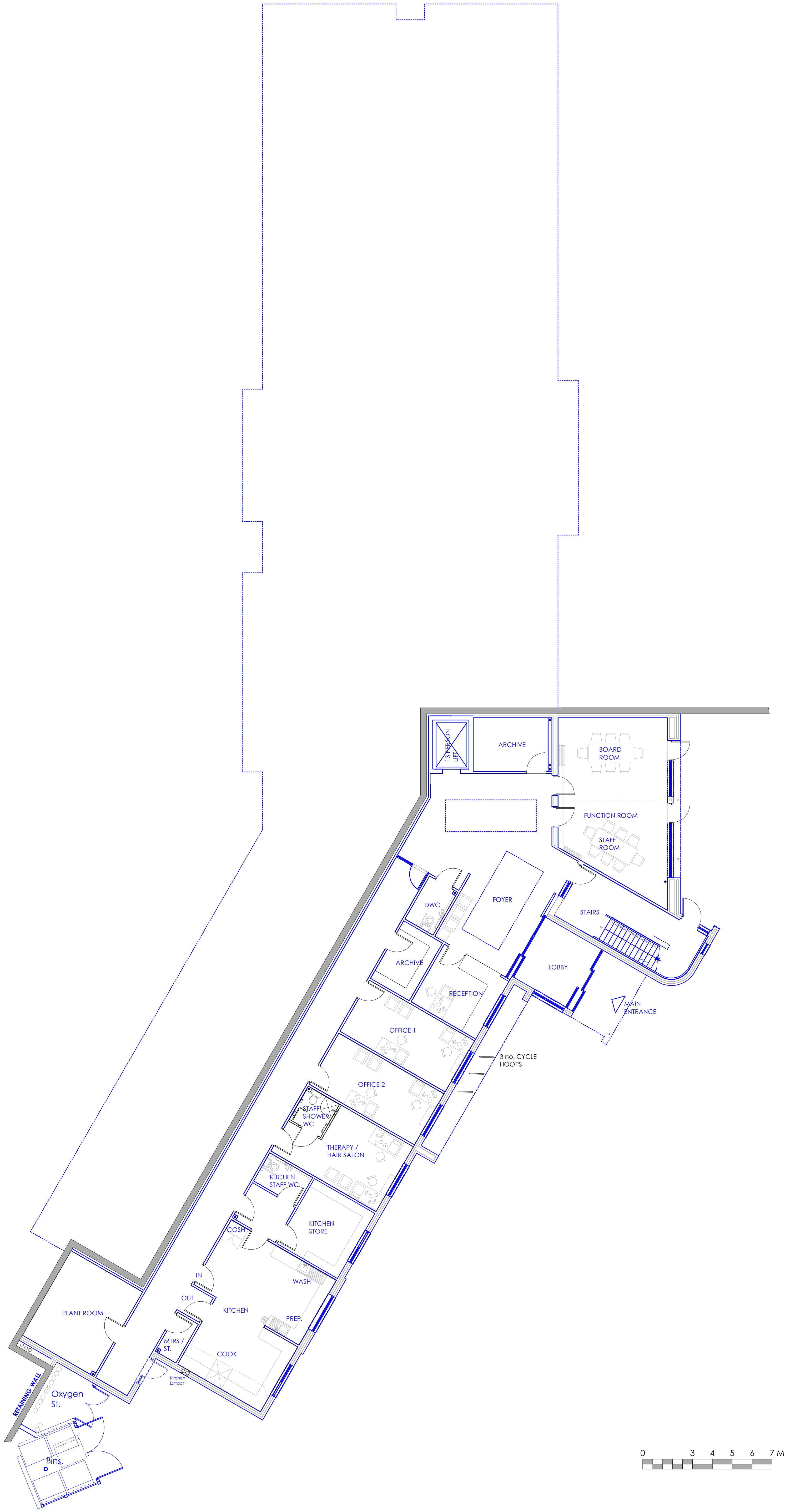


- NOTES
- This drawing is copyright of Candy and Lofthouse Ltd. and may not be reproduced in any way without their specific permission.
- All dimensions are to be checked on site. Do not scale from this drawing, work to figured dimensions only. Any queries please contact the architect.
- This drawing has been prepared based upon a digital survey undertaken by Survey Operations, tel 01895 725 662.
- MATERIALS PROHIBITED
- Materials prohibited from use, except where used in accordance with 'good practice in the selection of construction materials [2002]'
- a High alumina cement in load bearing structures.
- b Wood wool slabs used as permanent shuttering or in structural elements.
- c Calcium chloride used as an additive in making concrete for use in reinforced concrete.
- d Aggregates for use in reinforced concrete which do not comply with British standard specifications current at the date of specification of the materials.
- e Calcium silicate bricks or tiles.
- f Asbestos or asbestos based products including crocidolite.
- g Lead or any materials containing lead which may be ingested, inhaled or absorbed.
- h Used formaldehyde foam or materials which may be hazardous with reference to the limits set by the health & safety executive at the date of specification of the materials.
- i Materials which are generally composed of mineral fibres either man-made or naturally occurring which have a diameter of 3 microns or less and a length of 200 microns or less, or which contain any fibres not sealed or otherwise stabilised to ensure that fibre migration is prevented.



REVISION DETAILS

date / by

Preliminary

For Approval

Tender

Construction

CLIENT

Seddon Construction Ltd.

PROJECT

Broad Green House,
Liverpool

DRAWING TITLE

Lower Ground Floor Plan

SCALE

drawn by

date

1:100@A1

MW

Jun 2012

DRAWING NO

revision

12-001-120

CLA

Condy Lofthouse Architects

T: 0151 207 4371 • F: 0151 207 7087