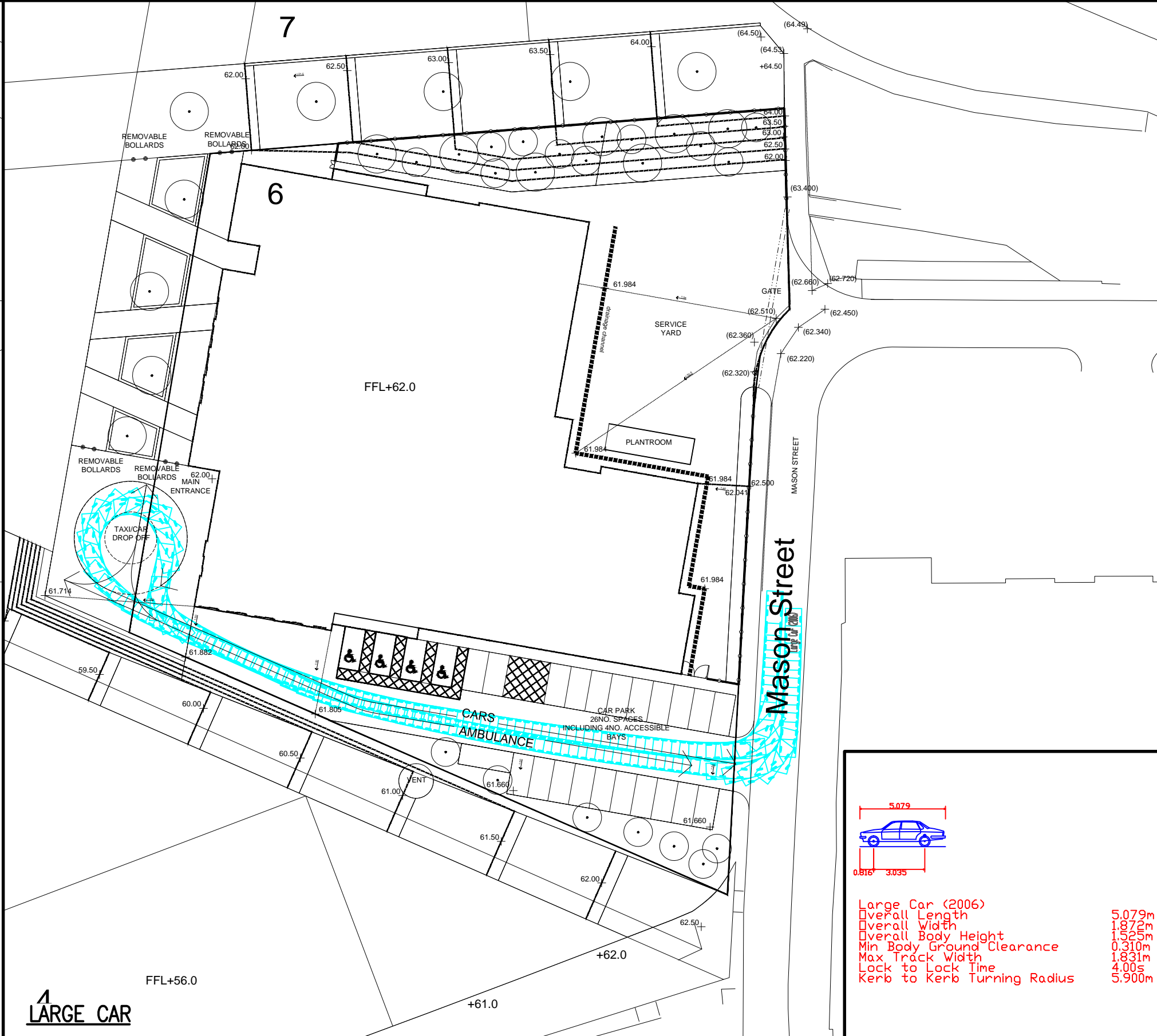
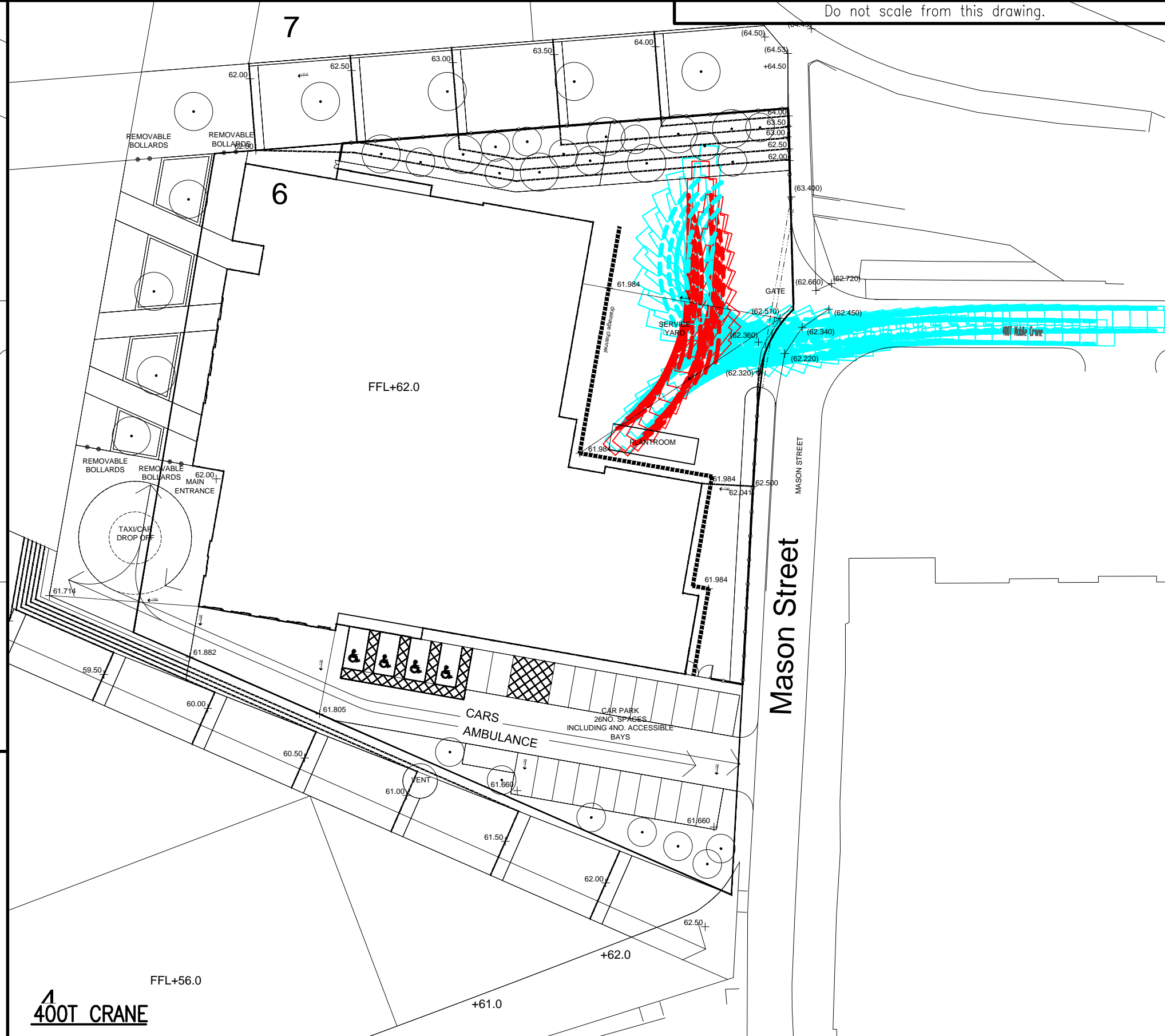


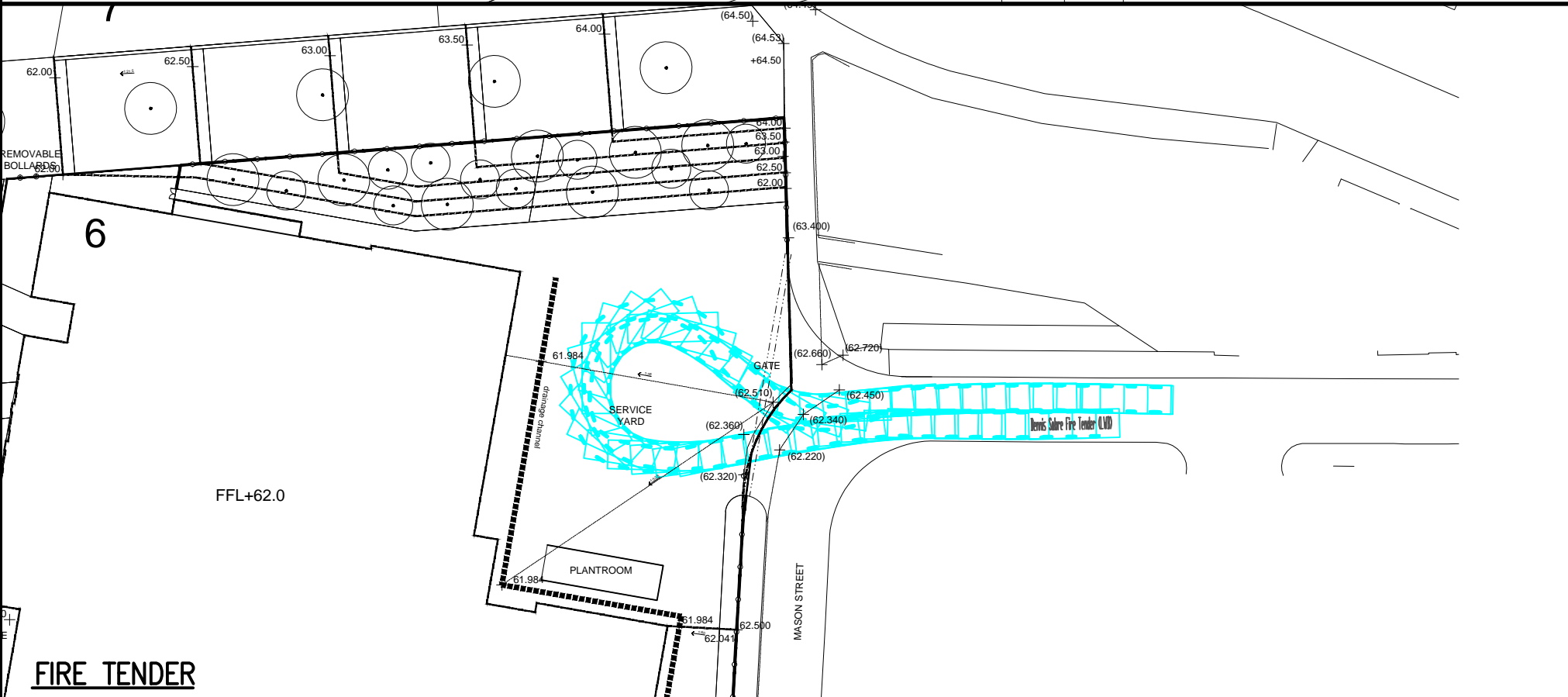
FIRE TENDER



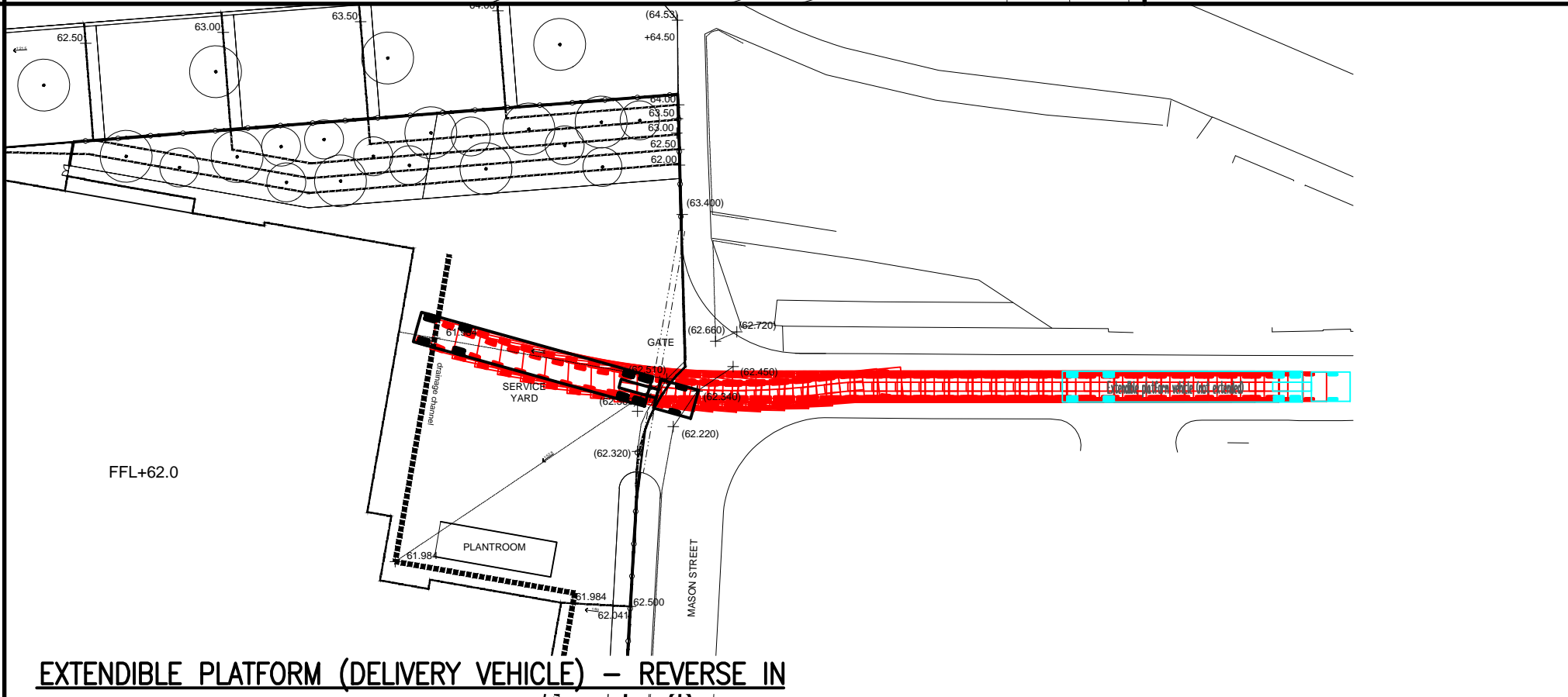
LARGE CAR



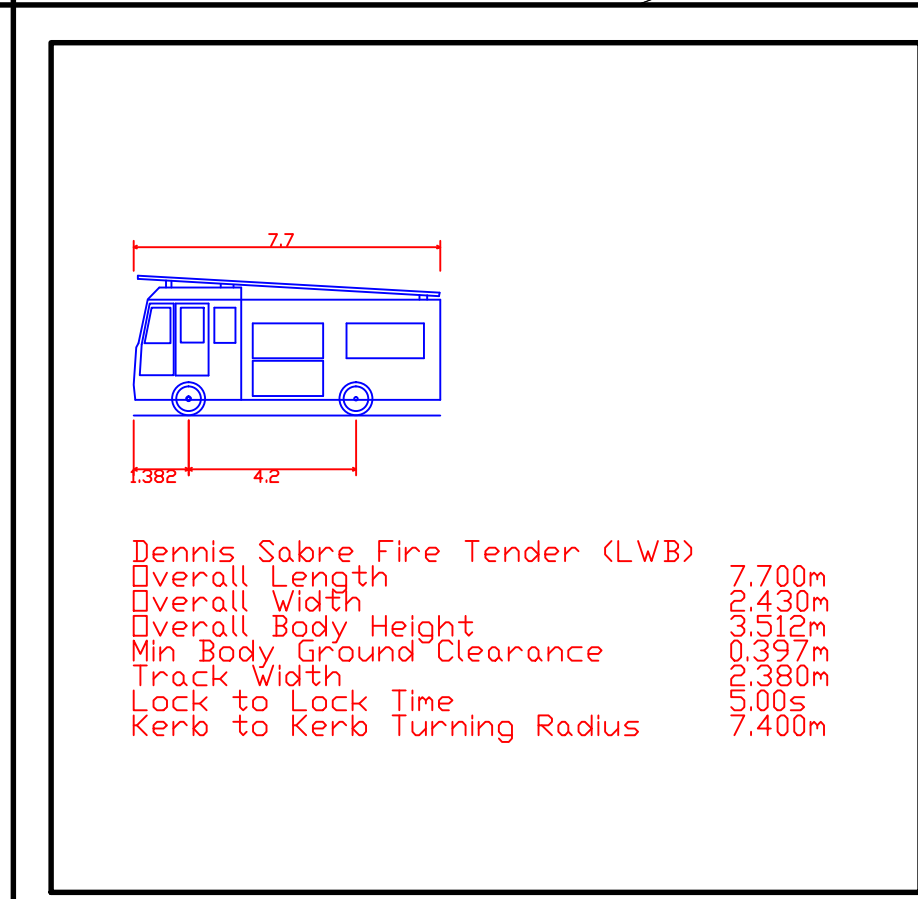
400T CRANE



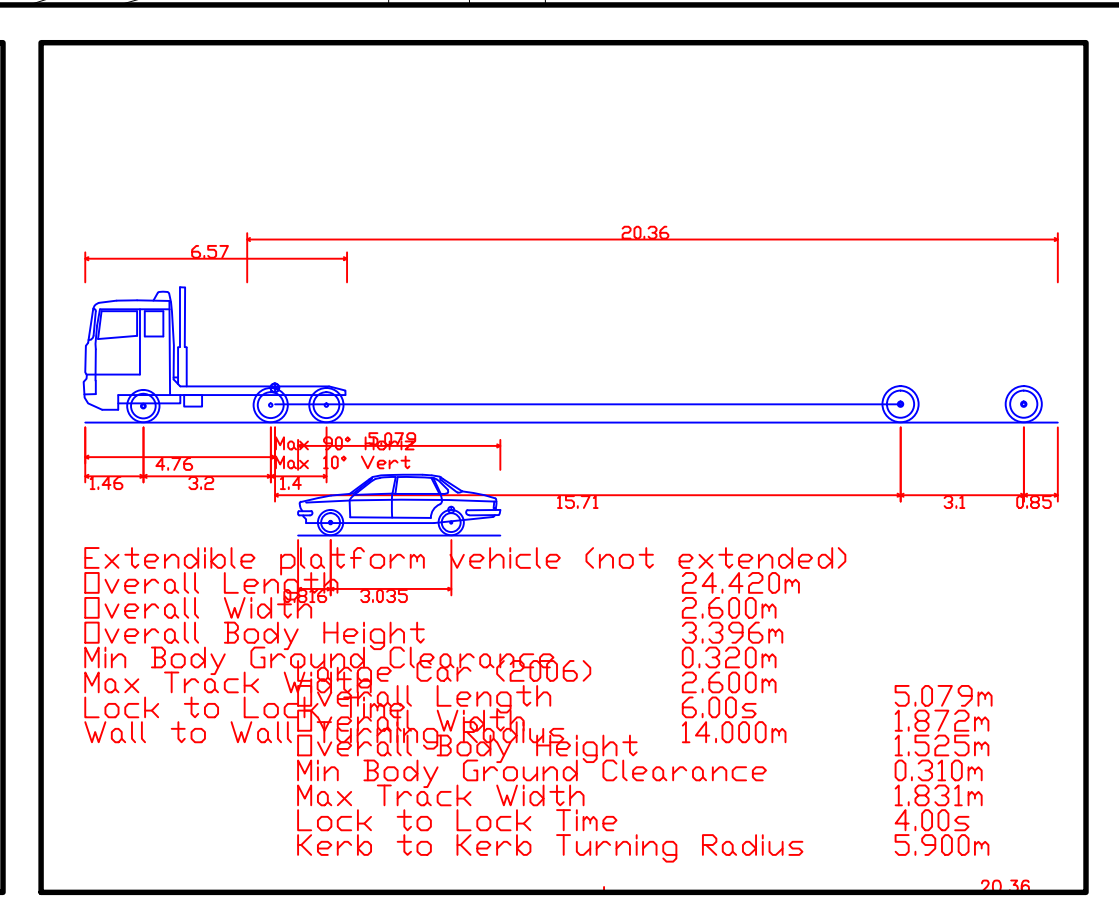
FIRE TENDER



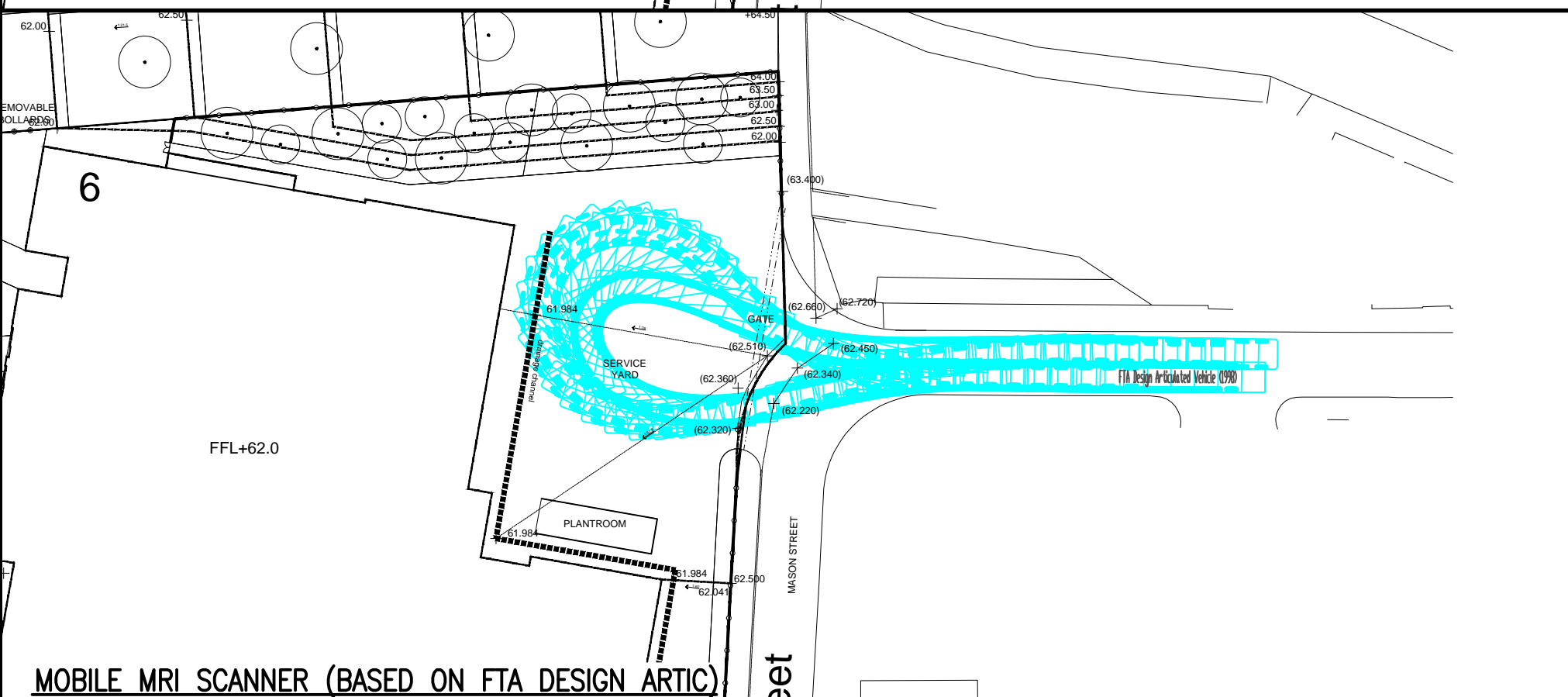
EXTENDIBLE PLATFORM (DELIVERY VEHICLE) - REVERSE IN



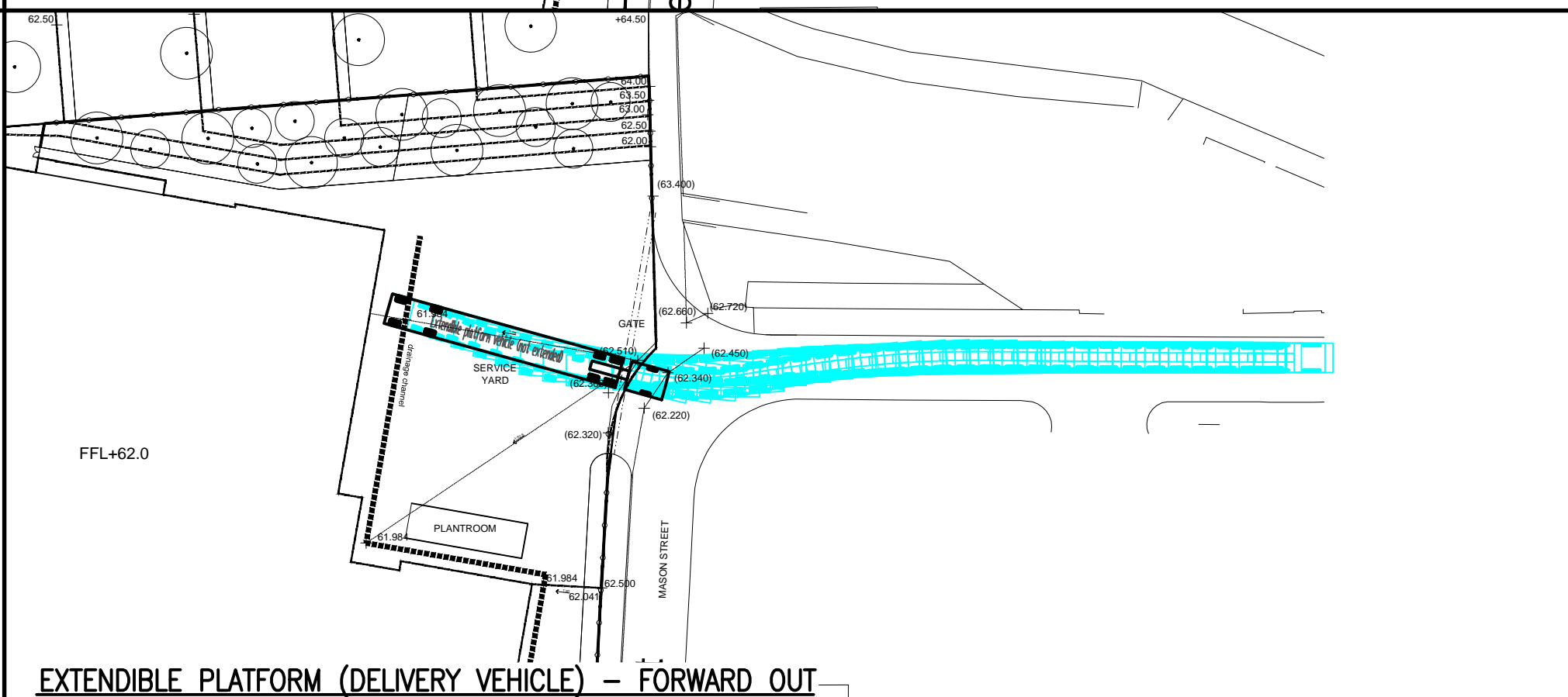
Dennis Sabre Fire Tender (LWB)
Overall Length 7.700m
Overall Width 4.200m
Overall Height 3.82m
Overall Body Height 4.200m
Min Body Ground Clearance 0.32m
Track Width 3.82m
Lock to Lock Time 6.00s
Kerb to Kerb Turning Radius 7.400m



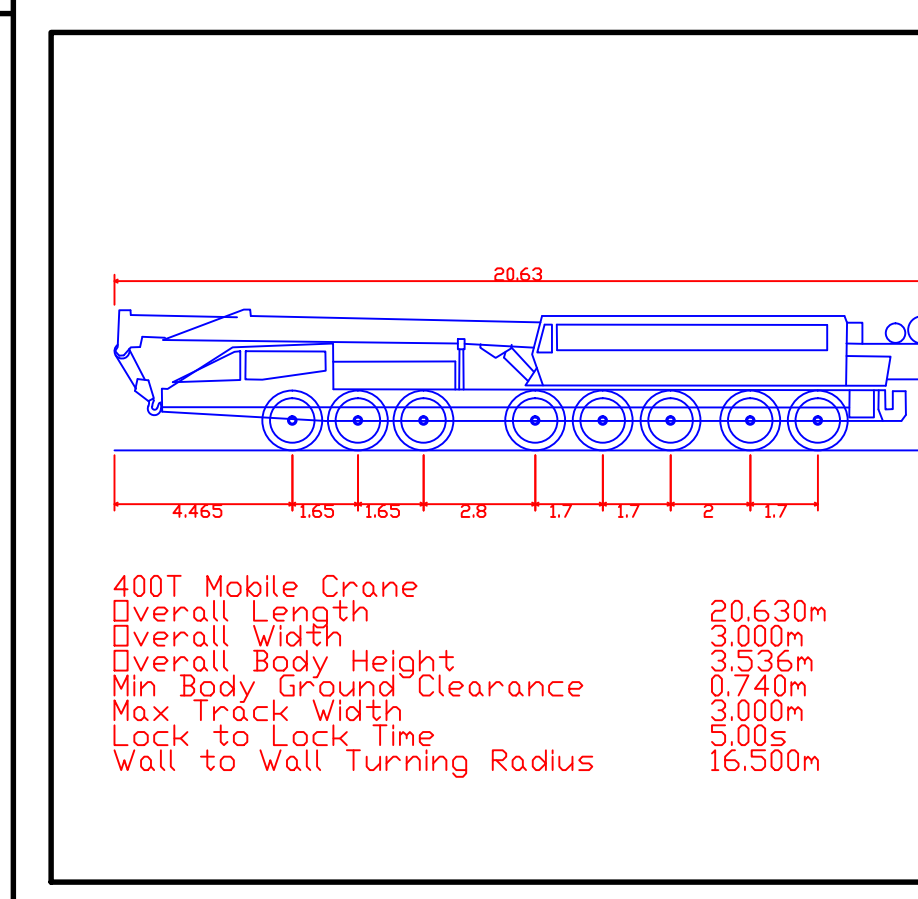
Extendible platform vehicle (not extended)
Overall Length 20.36m
Overall Width 3.35m
Overall Height 3.35m
Overall Body Height 3.35m
Min Body Ground Clearance 0.32m
Track Width 3.35m
Lock to Lock Time 6.00s
Wall to Wall Turning Radius 5.079m
Overall Body Height 1.872m
Min Body Ground Clearance 0.310m
Max Track Width 1.831m
Lock to Lock Time 4.00s
Kerb to Kerb Turning Radius 5.900m



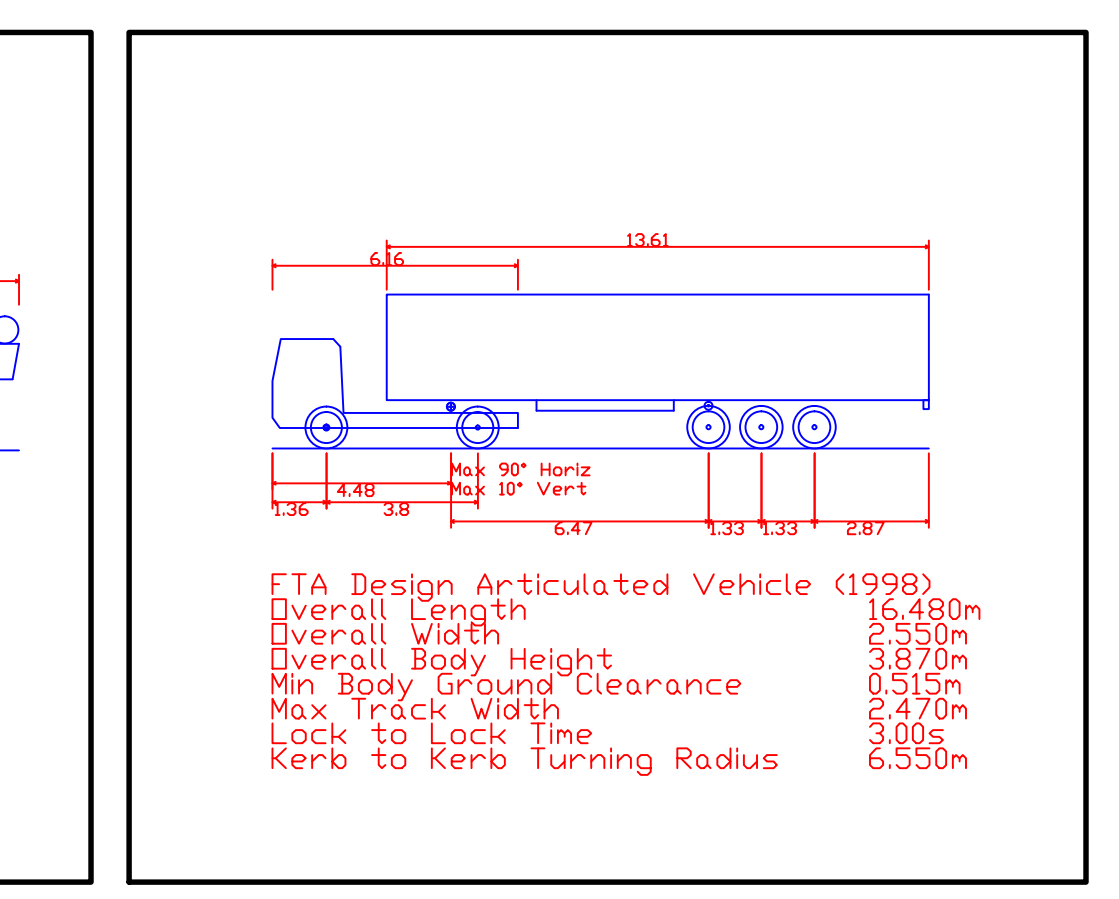
MOBILE MRI SCANNER (BASED ON FTA DESIGN ARTIC)



EXTENDIBLE PLATFORM (DELIVERY VEHICLE) - FORWARD OUT



400T Mobile Crane
Overall Length 20.630m
Overall Width 3.000m
Overall Height 3.35m
Overall Body Height 3.35m
Min Body Ground Clearance 0.32m
Max Track Width 3.000m
Lock to Lock Time 5.00s
Wall to Wall Turning Radius 16.500m



FTA Design Articulated Vehicle (1998)
Overall Length 16.480m
Overall Width 3.550m
Overall Height 3.550m
Overall Body Height 3.550m
Min Body Ground Clearance 0.32m
Max Track Width 3.550m
Lock to Lock Time 3.00s
Kerb to Kerb Turning Radius 6.550m

Rev.	Date	Description	Drawn	Checked	Approved
C	28/04/17	BASEPLAN UPDATED. LARGE CAR ADDED. SWEEP PATH ANALYSIS AMENDED WHERE NECESSARY.	JH	JM	JM
B	28/04/17	PLAN LAYOUTS UPDATED TO INCLUDE OOB'S GA WITH LEVELS.	JH	JM	DF
A	05/04/17	BASEPLAN UPDATED. SWEEP PATH ANALYSIS RE-RUN. EXTENDIBLE PLATFORM (DELIVERY VEHICLE) ADDED.	JH	JM	DF

KEY
Forward manoeuvre
Reverse manoeuvre

Client:
PROTON PARTNERS INTERNATIONAL

Project Title:
PPI LIVERPOOL
PADDINGTON PLACE
Drawing Title:
SWEEP PATH ANALYSIS

FAIRHURST
1 Arngrove Court, Barrack Road,
Newcastle-upon-Tyne, NE4 6DB
Tel: 0191 221 5505 Fax: 0844 381 4412

Scale at A1:
1:500

Status:
For Information

Drawn:
JH

Checked:
DF

Approved:
DF

Date:
13/03/17

Date:
13/03/17

Date:
13/03/17

Drawing No.:
118180/sk0001

Revision:
C