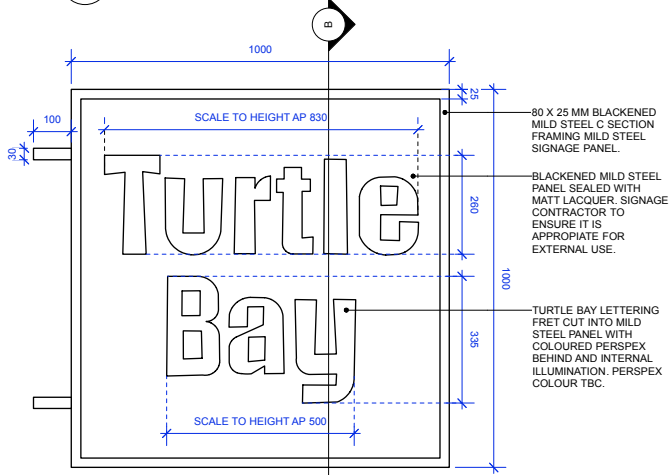
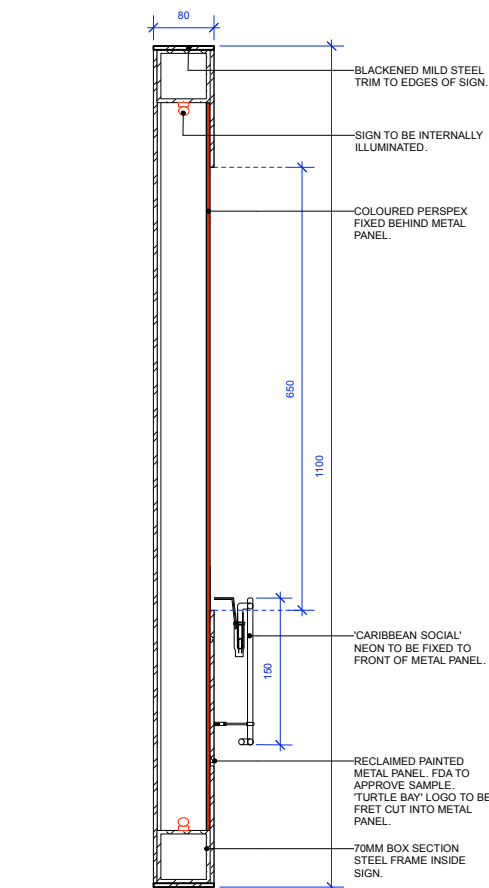




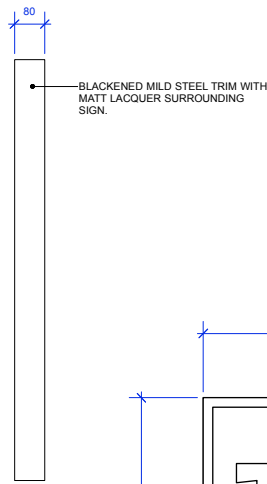
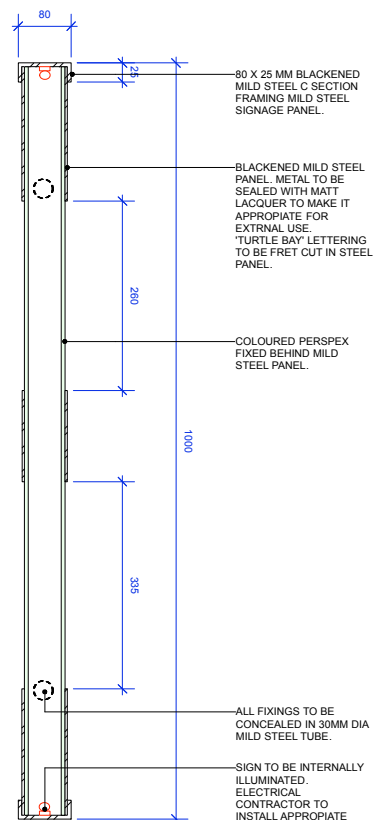
SIGN 01 ELEVATION
Scale: 1:10



SIGN 02 ELEVATION
Scale: 1:10



SIGN 01 & 2 SECTIONS
Scale: 1:5



BLACKENED MILD STEEL TRIM WITH
MATT LACQUER SURROUNDING
SIGN.

NEON 'CARIBBEAN
SOCIAL' TO BE FIXED TO
FACE OF RECLAIMED
METAL PANEL.

'TURTLE BAY' SIGNAGE FRET
CUT INTO RECLAIMED METAL
PANEL WITH A COLOURED
PERSPEX FACE AND INTERNAL
ILLUMINATION.

RECLAIMED PAINTED METAL. FDA TO
APPROVE SAMPLE.

80 X 25 MM BLACKENED
MILD STEEL C SECTION
FRAMING MILD STEEL
SIGNAGE PANEL.

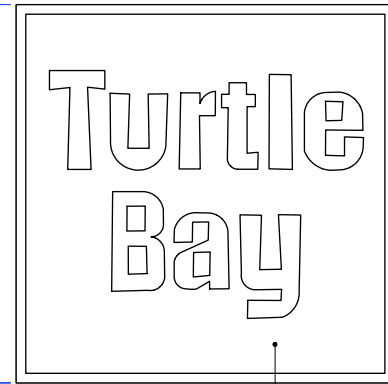
BLACKENED MILD STEEL
PANEL SEALED WITH
MATT LACQUER. SIGNAGE
CONTRACTOR TO
ENSURE IT IS
APPROPRIATE FOR
EXTERNAL USE.

TURTLE BAY LETTERING
FRET CUT INTO MILD
STEEL PANEL WITH
COLOURED PERSPEX
BEHIND AND INTERNAL
ILLUMINATION. PERSPEX
COLOUR TBC.

80 X 25 MM BLACKENED
MILD STEEL C SECTION
FRAMING MILD STEEL
SIGNAGE PANEL.

BLACKENED MILD STEEL
PANEL SEALED WITH
MATT LACQUER. SIGNAGE
CONTRACTOR TO
ENSURE IT IS
APPROPRIATE FOR
EXTERNAL USE.

TURTLE BAY LETTERING
FRET CUT INTO MILD
STEEL PANEL WITH
COLOURED PERSPEX
BEHIND AND INTERNAL
ILLUMINATION. PERSPEX
COLOUR TBC.

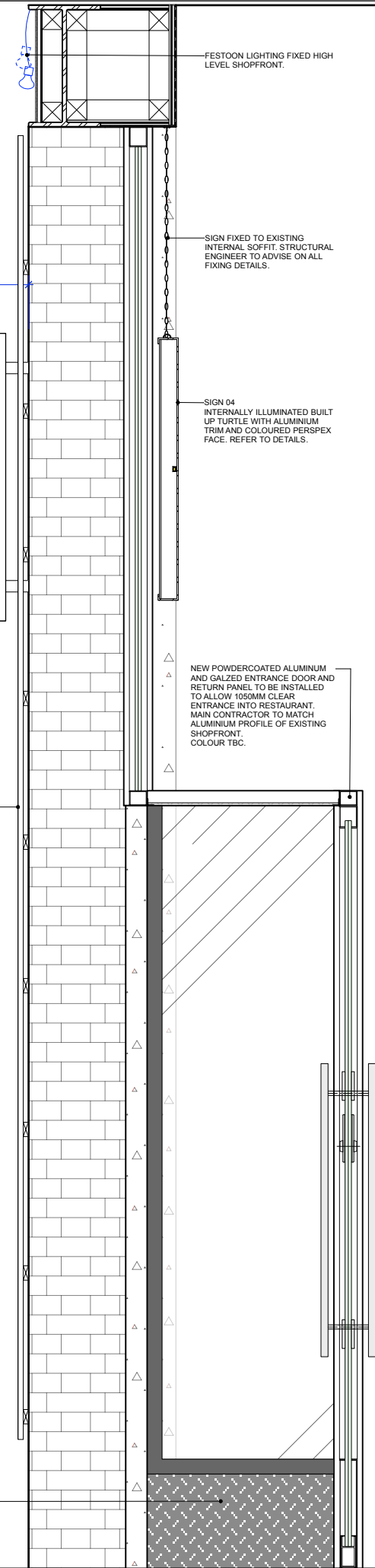


SIGN 02
MILD STEEL AND PERSPEX
INTERNALLY ILLUMINATED
PROJECTING SIGN. REFER TO
DETAILS.

18MM MARINE PLY GRAPHIC
PANELS FIXED TO EXISTING
BRICK PIERS.
MARINE PLY TO HAVE MILD
STEEL TRIM.

SITE DIM AP 3300

EXISTING AND NEW STORE
RISER TO BE CLAD WITH
BLACKENED CHEQUER PLATE
SEALED WITH MATT LACQUER.



PROPOSED SHOPFRONT SECTION
Scale: 1:10

FESTOON LIGHTING FIXED HIGH
LEVEL SHOPFRONT.

SIGN FIXED TO EXISTING
INTERNAL SOFFIT. STRUCTURAL
ENGINEER TO ADVISE ON ALL
FIXING DETAILS.

SIGN 04
INTERNALLY ILLUMINATED BUILT
UP TURTLE WITH ALUMINIUM
TRIM AND COLOURED PERSPEX
FACE. REFER TO DETAILS.

NEW POWDERCOATED ALUMINIUM
AND GALZED ENTRANCE DOOR AND
RETURN PANEL TO BE INSTALLED
TO ALLOW 1050MM CLEAR
ENTRANCE INTO RESTAURANT.
MAIN CONTRACTOR TO MATCH
ALUMINIUM PROFILE OF EXISTING
SHOPFRONT. COLOUR TBC.

Notes

This drawing should not be scaled. The contractor is to verify all dimensions and conditions on site. This drawing is the property of Fusion and they reserve the copyright. It is issued on the understanding that it will not be copied, reproduced or disclosed in whole or in part to any unauthorised party without written permission from Fusion

FUSION
design and architecture



4 Risborough Street London SE1 OHE
Tel: 020 7928 9982 Fax: 020 7928 9994
email: mail@fusiondna.co.uk

Job Name: **TURTLE BAY
LIVERPOOL**
Site Address: **UNITS 2-3 THE PARADISE
PROJECT, HANOVER STREET,
LIVERPOOL**
Org Name: **SHOPFRONT SIGNAGE**
Status: **FOR APPROVAL**

Drawn by: **LE** Checked by: **MC**
Scale: **1:50@A1/
1:100@A3** Date: **NOV 2015**

Job/Org N°: **110/50-906**