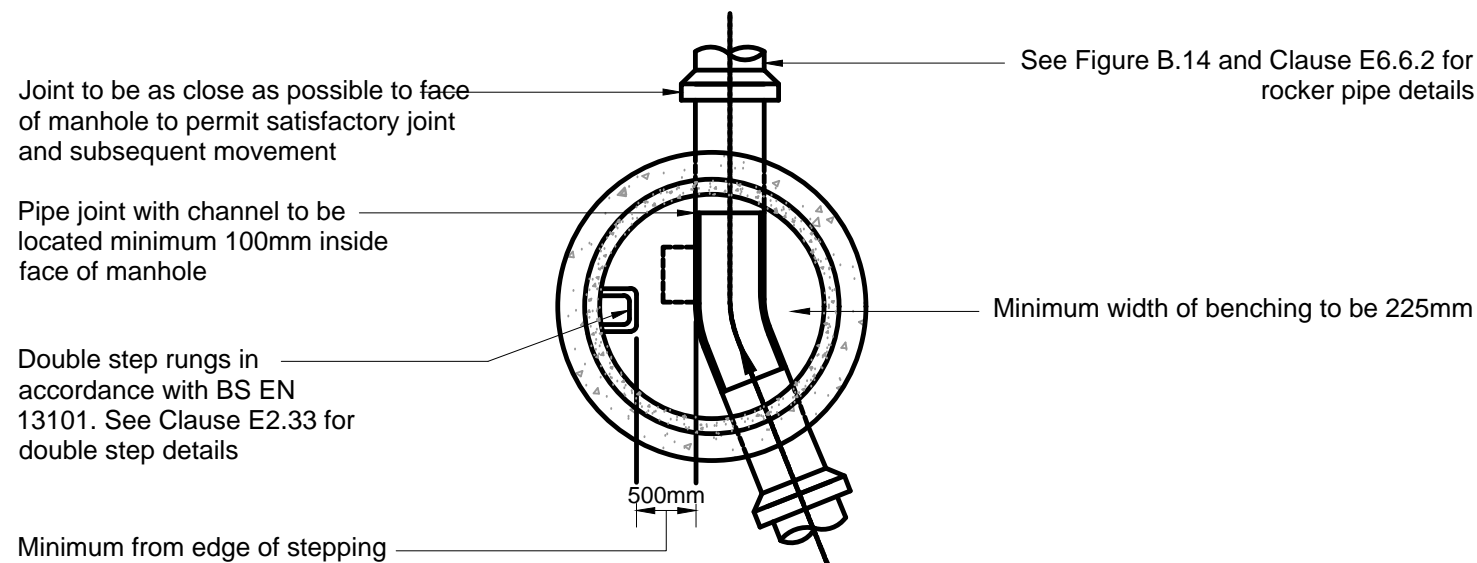
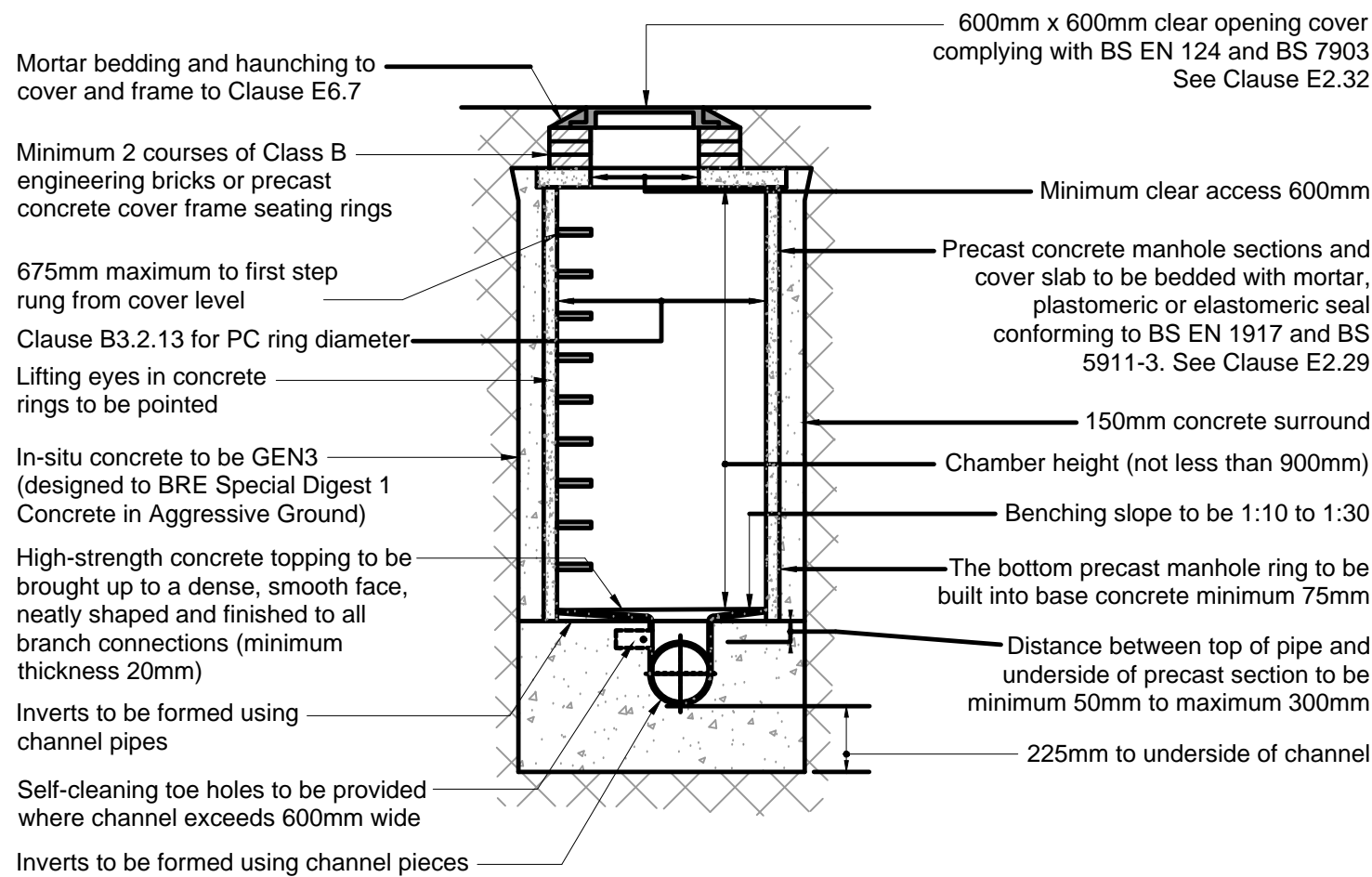
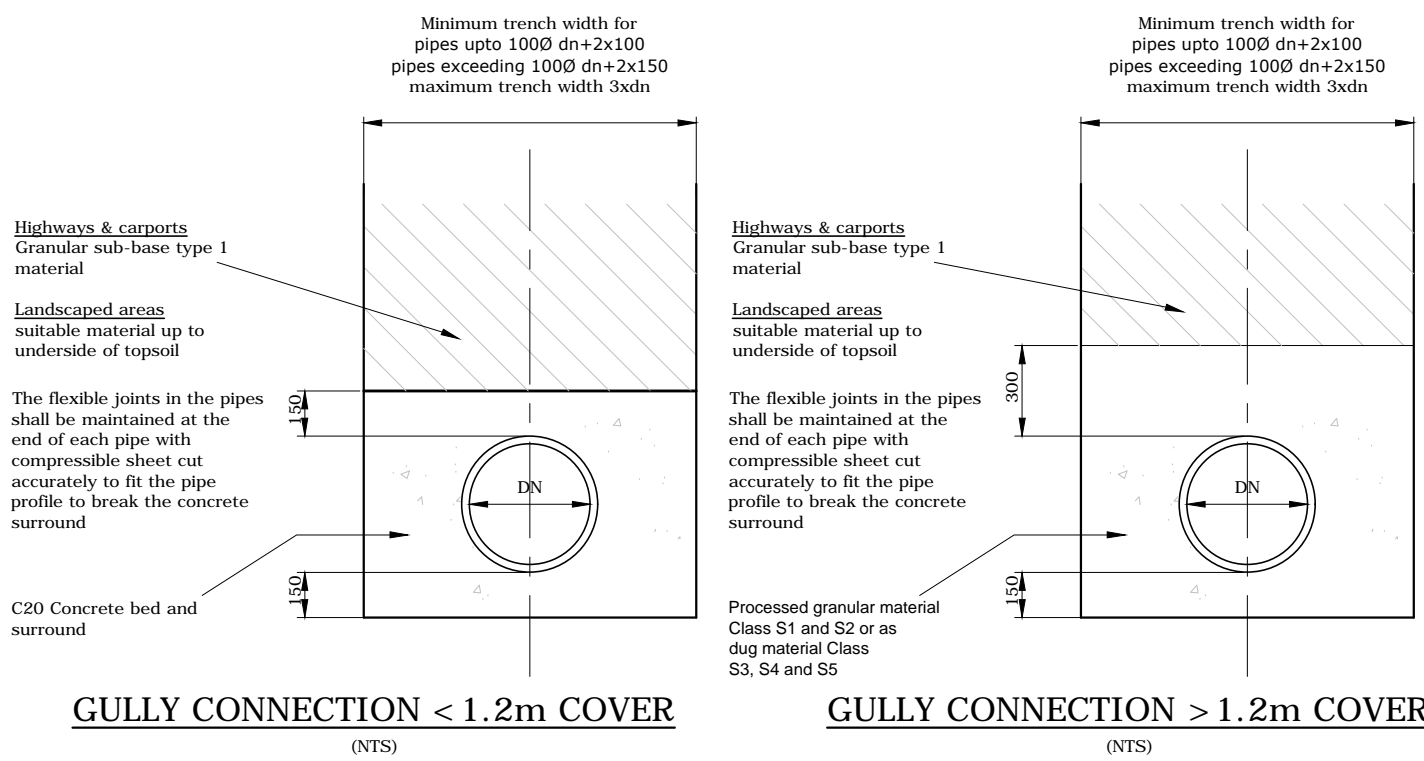


ROAD GULLY DETAIL
N.T.S

MANHOLE COVERS WITHIN TRAFFICKED PAVED AREAS TO BE D400 RECESSED COVERS. BESPOKE UNITS REQUIRED TO ALLOW INSET OF 180mm GRANITE SETTS AND FULL BEDDING LAYER

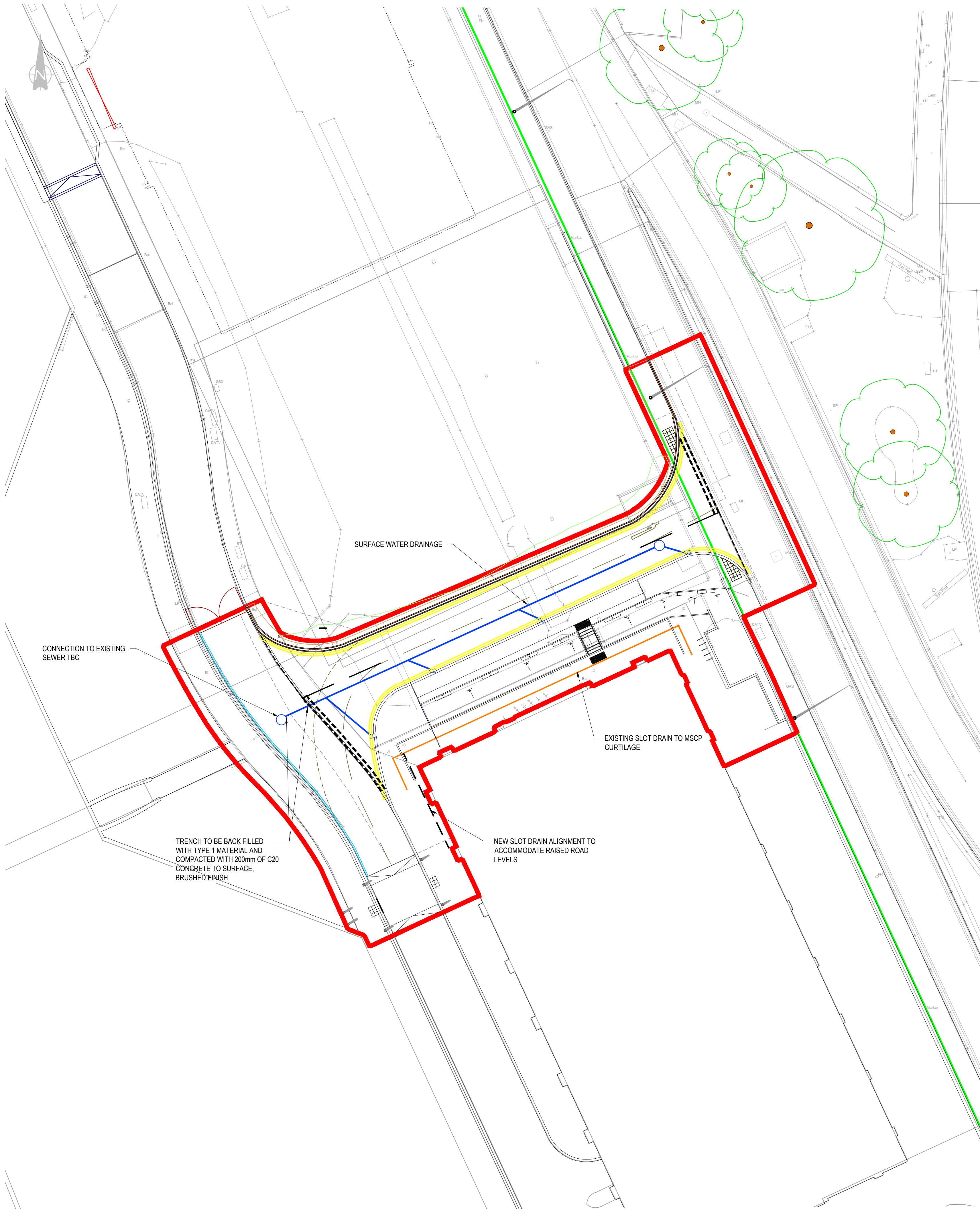


TYPICAL MANHOLE DETAIL - TYPE 2
(Maximum depth from cover to soffit of pipe 1.2m - 2m)
N.T.S



GULLY CONNECTION < 1.2m COVER
(NTS)

GULLY CONNECTION > 1.2m COVER
(NTS)



GENERAL NOTES:

- THIS DRAWING IS TO BE READ IN CONJUNCTION WITH ALL RELEVANT ARCHITECTS AND ENGINEERS DRAWINGS AND SPECIFICATIONS.
- DO NOT SCALE THIS DRAWING. ANY AMBIGUITIES, OMISSIONS AND ERRORS ON DRAWINGS SHALL BE BROUGHT TO THE ENGINEERS ATTENTION IMMEDIATELY. ALL DIMENSIONS MUST BE CHECKED / VERIFIED ON SITE.
- ALL DIMENSIONS ARE IN MILLIMETRES UNLESS NOTED OTHERWISE.
- FOR GENERAL NOTES REFER TO DRAWING.
- ALL ROAD MARKINGS TO BE IN ACCORDANCE WITH 'THE TRAFFIC SIGNS REGULATIONS AND GENERAL DIRECTIONS' MANUAL.
- ANY EXISTING ROAD MARKINGS THAT ARE DAMAGED DURING CONSTRUCTION ARE TO BE MADE GOOD.
- LAYOUT IS SUBJECT TO DETAILED DESIGN.

KEY:

- SITE BOUNDARY
- HIGHWAY BOUNDARY
- PROPOSED SURFACE WATER SEWER
- EXISTING SLOT DRAIN
- NEW SLOT DRAIN
- PROPOSED MANHOLE
- PROPOSED GULLY

NOT CURRENTLY
TECHNICALLY
APPROVED BY THE
LOCAL AUTHORITY

P08	CONSTRUCTION ISSUE (UPDATED)	12/07/18	AMG	HS
P07	CONSTRUCTION ISSUE	06/07/18	HS	HS
P06	LAYOUT UPDATED	30/05/18	HS	HS
P05	DRAWING UPDATED	08/01/18	HS	HS
P04	DRAWING UPDATED TO LATEST PLANIT LAYOUT	20/12/17	AMG	RB
P03	DRAWING UPDATED TO LATEST PLANIT LAYOUT	25/10/17	HS	HS
P02	DRAWING UPDATES	19/09/17	AMG	HS
P01	ISSUED FOR CO-ORDINATION (S1)	04/08/17	AMG	HS

Rev:	Description:	Date:	By:	Chkd:
------	--------------	-------	-----	-------



Merchant Exchange, 17-19 Whitworth Street West, Manchester, M1 5WG
0161 235 2354
manchester@curtins.com
www.curtins.com

Civils & Structures • Transport Planning • Environmental • Infrastructure • Geotechnical • Conservation & Heritage • Principal Designer
Birmingham • Bristol • Cambridge • Cardiff • Douglas • Dublin • Edinburgh • Glasgow • Harlow • Leeds • Liverpool • London • Manchester • Nottingham

ISSUED FOR CONSTRUCTION

Project: LIVERPOOL WATERS
BATH STREET
Orig Title: BATH STREET
DRAINAGE

Size:	Date:	Drawn By:	Designed By:	Checked By:
A1	04/08/17	AMG	HS	HS
Scale:	1:250			
Project No:	Originator:	Zone:	Level:	Type:
064095 - CUR - 00 - XX - DR - C -	95006	-P08		