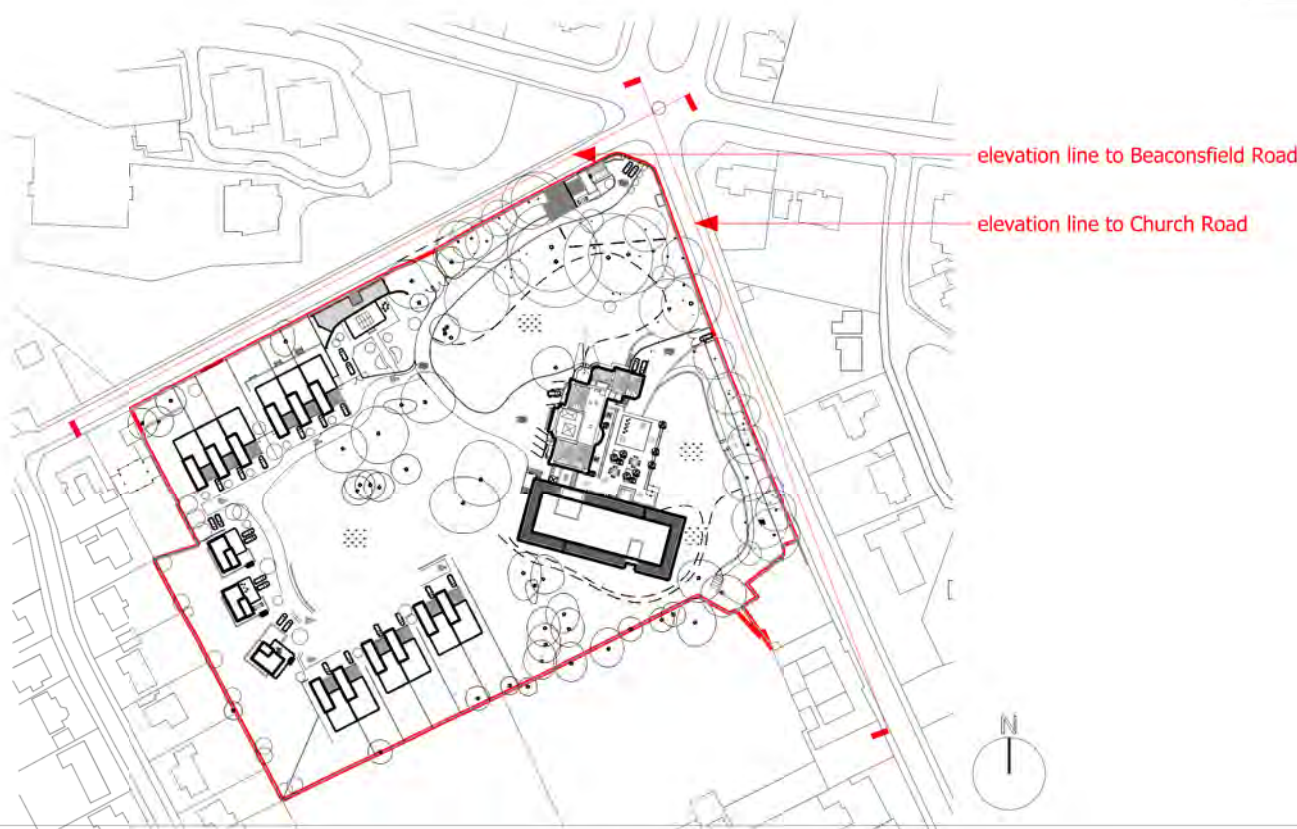




Proposed Beaconsfield Road Elevation (1:250)



Proposed Church Road Elevation (1:250)



MATERIAL KEY:
A red sandstone wall (minor repointing required)
B new metal automated entrance gates (set back - see site plan)
C timber pedestrian gate removed (matching sandstone infill)
D listed gates and gateposts
E Greek lodge
F timber fence on top of sandstone wall removed
G metal railings
H existing entrance removed (matching sandstone infill on line of existing wall)