

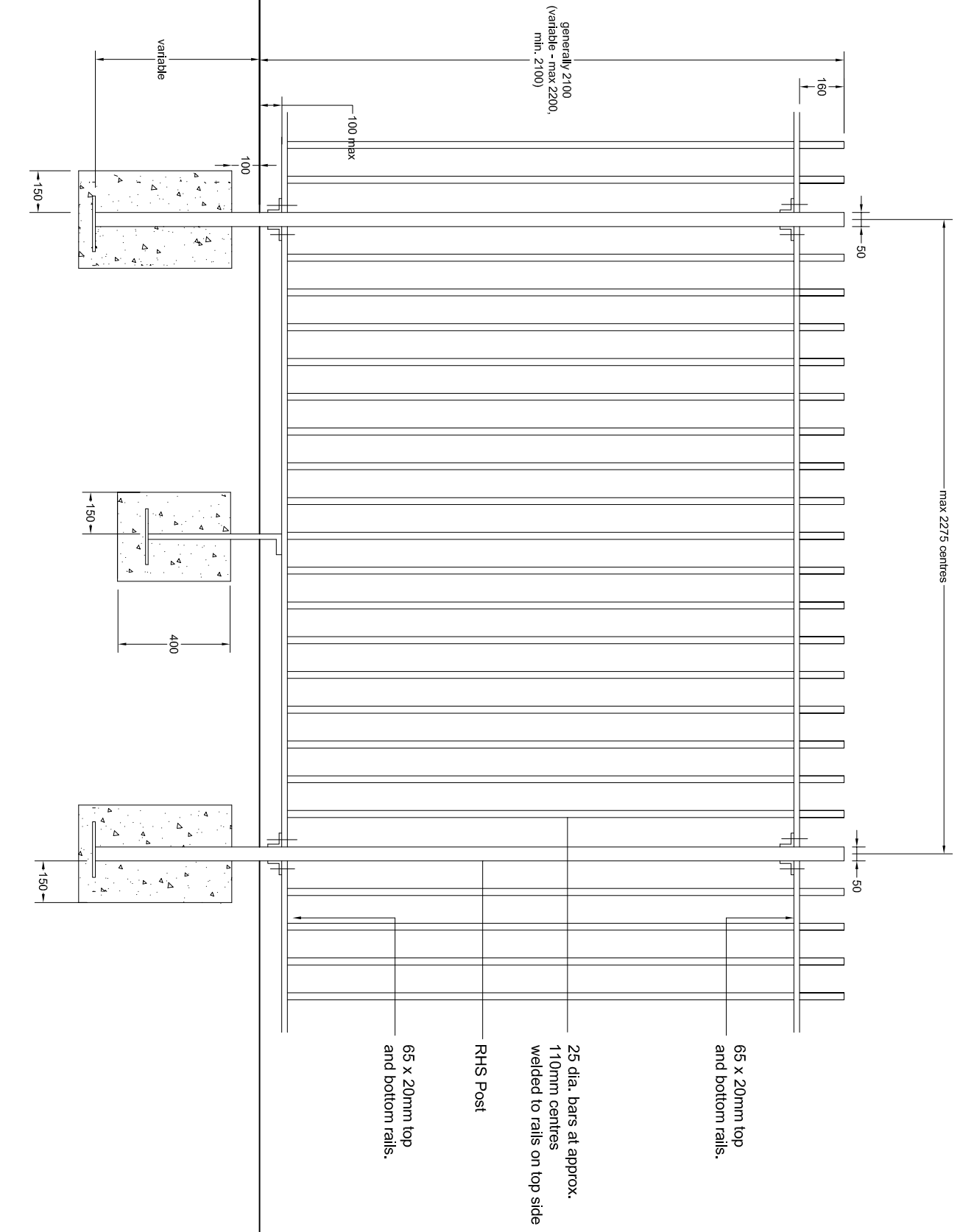
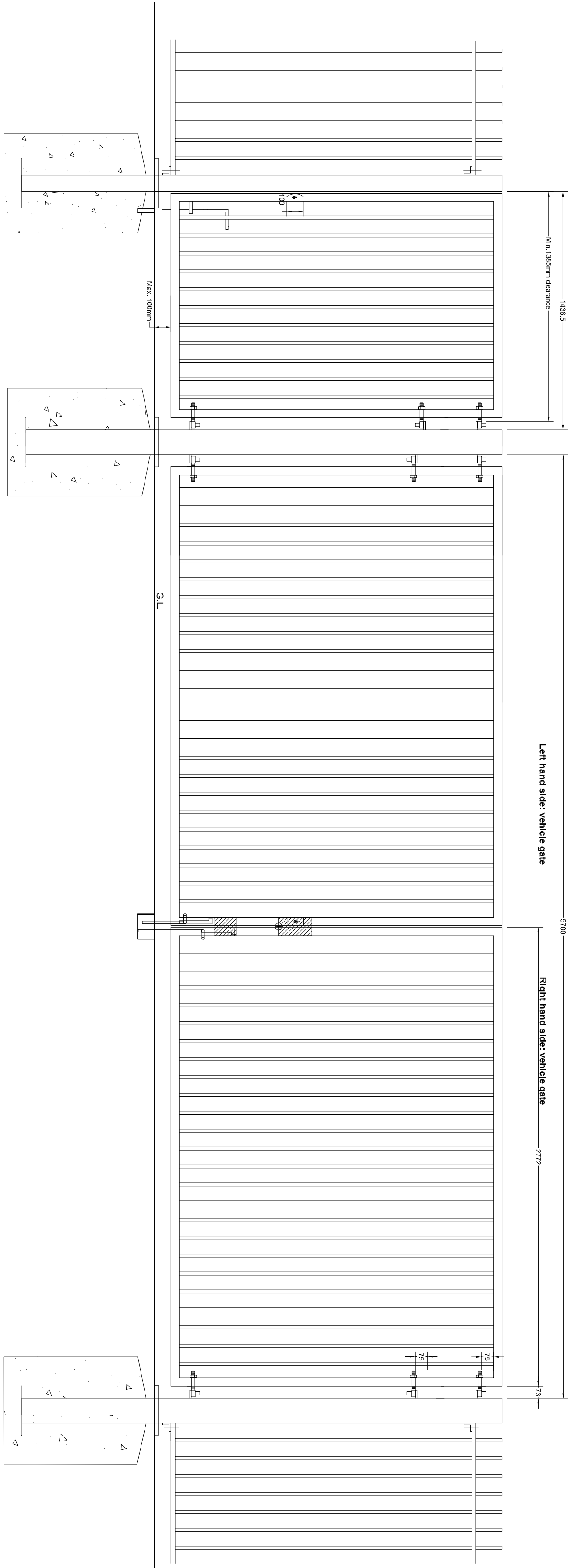
STANDARD RAILING PATTERN

SINGLE-LEAF (Pedestrian) GATE

DOUBLE-LEAF (Vehicle) GATE

STANDARD RAILING PATTERN

STANDARD RAILING PATTERN

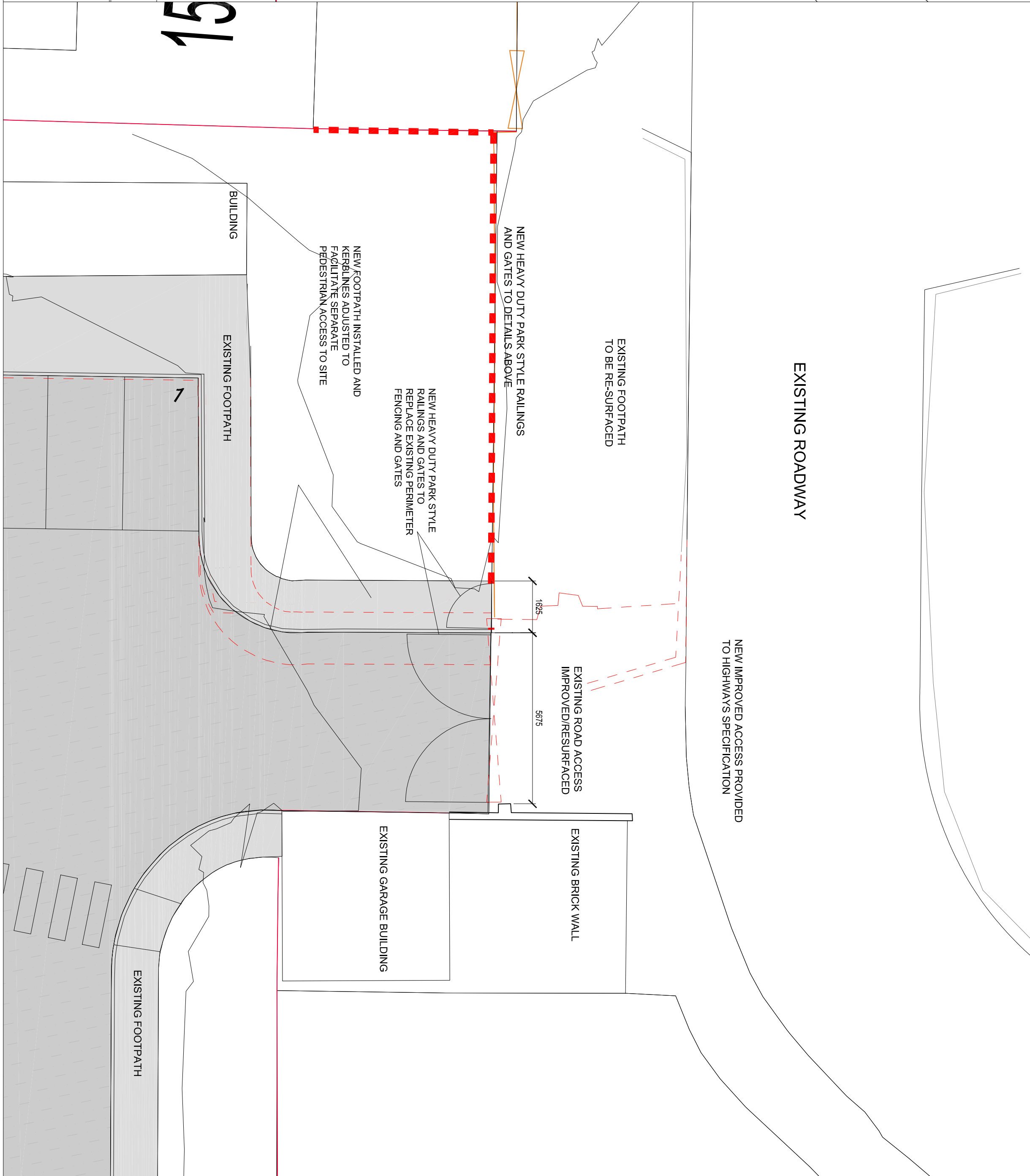
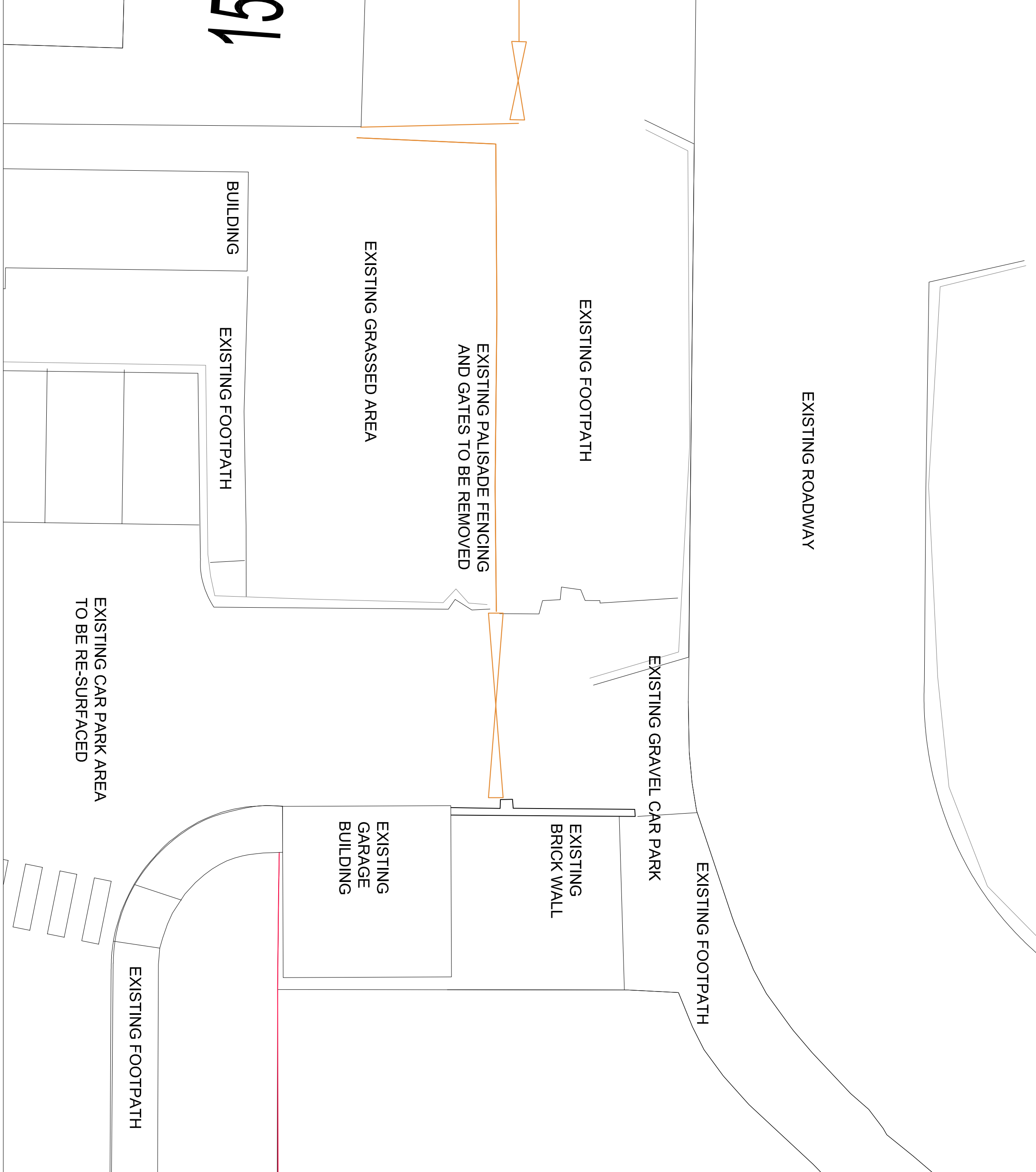


- Notes**
1. All dimensions are in millimetres.
  2. All dimensions are to be in accordance with all relevant standards.
  3. Steel is to be in accordance with BS 1722 part 9.
  4. All steel is to be hot dipped galvanised in accordance with BS5950.
  5. Fitting bolts to comply with BS4190 or BS4553 and buried over to prevent removal.
  6. Steelwork is to be treated with an alkali primer finishing paint to be confirmed by the CA, colour black.
  7. On sloping ground posts and bars are to be fixed to the ground profile unless agreed with the CA.
  8. All concrete mix ST12 to BS5328.

**Key**

Existing site perimeter fence/line incorporating vertical palisade railing type fencing to be removed

Proposed new site perimeter fence/line incorporating railing and gate details as shown



View		Author	Checked	Approved
Site	Details	A. Jones	A. Smith	A. Brown
building great relationships				
mouchel				
Liverpool City Council				
FA Parklife Project - Heion Eccles Site				
Proposed Perimeter Railing Details showing Proposed Boundary Fencing and Gate Details				
Boundary Fence and Gate Details, Site Entrance				
Scale	Drawn	Checked	Approved	
1:200/1:100	JJ	JM	JM	
Original Size	Date	Date	Date	
A1	February 2016	February 2016	February 2016	
Drawing Number	Version			
1070311-MOU-00-DR-A-0004	-			