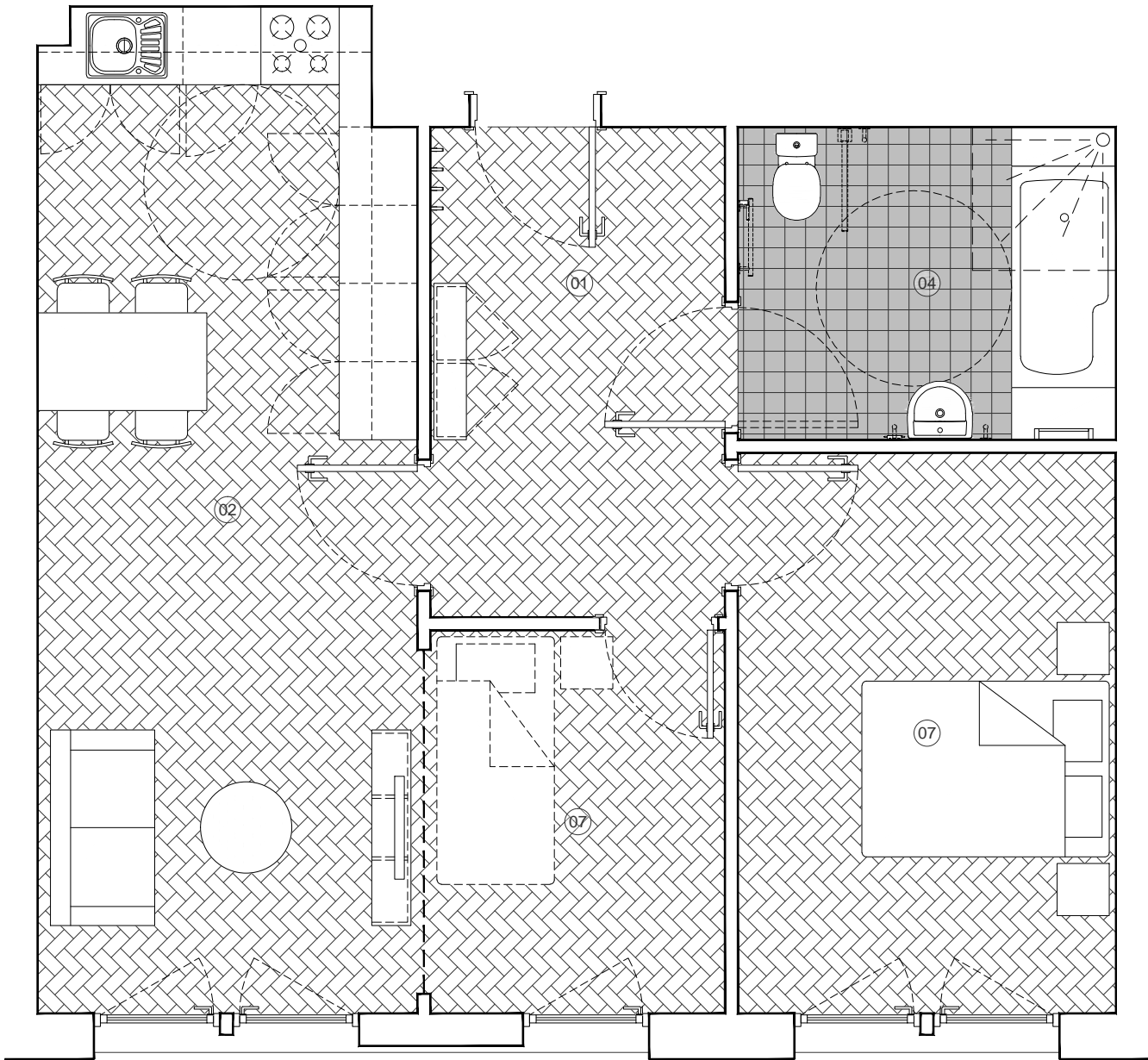


All dimensions to be checked on site.  
Figured dimensions to be read in preference to scaled.

This drawing is copyright and remains the property of SMITH YOUNG Architecture Ltd unless otherwise agreed.

SMITH YOUNG Architecture Ltd accepts no responsibility for any unauthorised amendments to the drawing and does not permit unauthorised copying of the drawing.

Revisions / Notes:



\*PLEASE NOTE THAT WINDOW POSITIONS AND OPENING FUNCTION MAY VARY BETWEEN BLOCKS.

All apartments are to be accessible and adaptable (Category 2) as per the Approved Document of Building Regulations Part M and The Accessible House Standards.

A **13%** of wheelchair user apartments (Category 3) has ben provided within the development.

All internal apartment corridors are at least 1050mm wide and all doorways have a clear opening of 775mm. All spaces are designed to enable minimum turning circles to be accommodated and minimum clearances beyond fixed furniture such as beds. All bathrooms walls will be capable of taking adaptations such as handrails. All switches, sockets and controls will be fitted at a height which is usable by all (i.e. between 450mm and 1200mm from the floor). In addition, the internal layout of apartments will include the following;

- At least one bathroom per apartment sized to allow for conversion into a wet-room which incorporates space for a 1500mm turning circle.

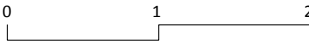
- At least one bathroom per apartment to incorporate a WC approach zone extending at least 350mm from the WC's centre line towards the adjacent wall and at least 1000mm from the WC's centre line on the other side.

- At least one bathroom per apartment to incorporate a wash basin frontal approach zone 700mm wide, extending 1100mm from any obstruction under the basin's bowl such as pedestal, trap, duct or cabinet furniture.

KEY:

- 01\_Entrance/Lobby
- 02\_Kitchen/Living/Dining
- 03\_Utility/Storage
- 04\_Family Bathroom
- 05\_En-Suite
- 06\_Master Bedroom
- 07\_Bedroom

Scale Bar (metres)



Apartment Type H  
Area Sq.M: 58.3 sqm.  
Area Sq.Ft: 627.8 sqft.  
No. Bedrooms: 2  
No. Bathrooms: 2  
Accessibility: Category 3

APARTMENT LAYOUT - TYPE H @ 1:50

Job Title:	NAYLOR STREET PHASE 1		
Purpose:	COMMENT		
Client:	SMITH YOUNG ARCHITECTURE LTD.		
Date:	31.05.2017		
Drawing Title:	APARTMENT LAYOUT TYPE H		
Drawn By:	MIS	Checked By:	MJY
Scale:	1:50	Paper Size:	A3
Job Number:	19.021	Drwg No:	018
		Rev:	